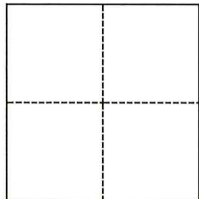


CORNER RECORD

Agency Index

CR-25-338

Document Number

City of TRACY County of SAN JOAQUIN, CaliforniaBrief Legal Description MONUMENT FOUND PER R.S. 36-118, S.J.C.R.**CORNER TYPE**

- ☐ Government Corner ☒ Control
☐ Meander ☐ Property
☐ Rancho ☐ Other

Date of Survey September 10, 2025

N/A - RANCHO EL PESCADERO

COORDINATES (Optional)N. 2102330.86 E. 6291416.02Elevation 15.22'Units ☐ Metric ☒ U.S. Survey FootHorizontal Datum NAD83Zone 3 Epoch Date 2004.0Vertical Datum NAVD88(GEOID18)☐ Complies with Public Resources Code §§8801-8819☒ Complies with Public Resources Code §§8890-8902

PLS Act Ref.:

☐ 8765(d)☒ 8771☐ 8773☐ Other:Corner/
Monument:☒ Left as found☐ Established☐ Rebuilt☒ Pre-Construction☐ Found and tagged☐ Reestablished☒ Referenced☐ Post-Construction

Narrative of corner identified and monument as found, set, reset, replaced, or removed:

☒ See sheet #2 for description(s):**SURVEYOR'S STATEMENT**

This Corner Record was prepared by me or under my direction in conformance with

the Professional Land Surveyors' Act on September 24, 2025

Signed

P.L.S. or R.C.E. No.

9892**COUNTY SURVEYOR'S STATEMENT**

This Corner Record was received

October 21, 2025

and examined and filed

October 28, 2025

Signed

P.L.S. or R.C.E. No.

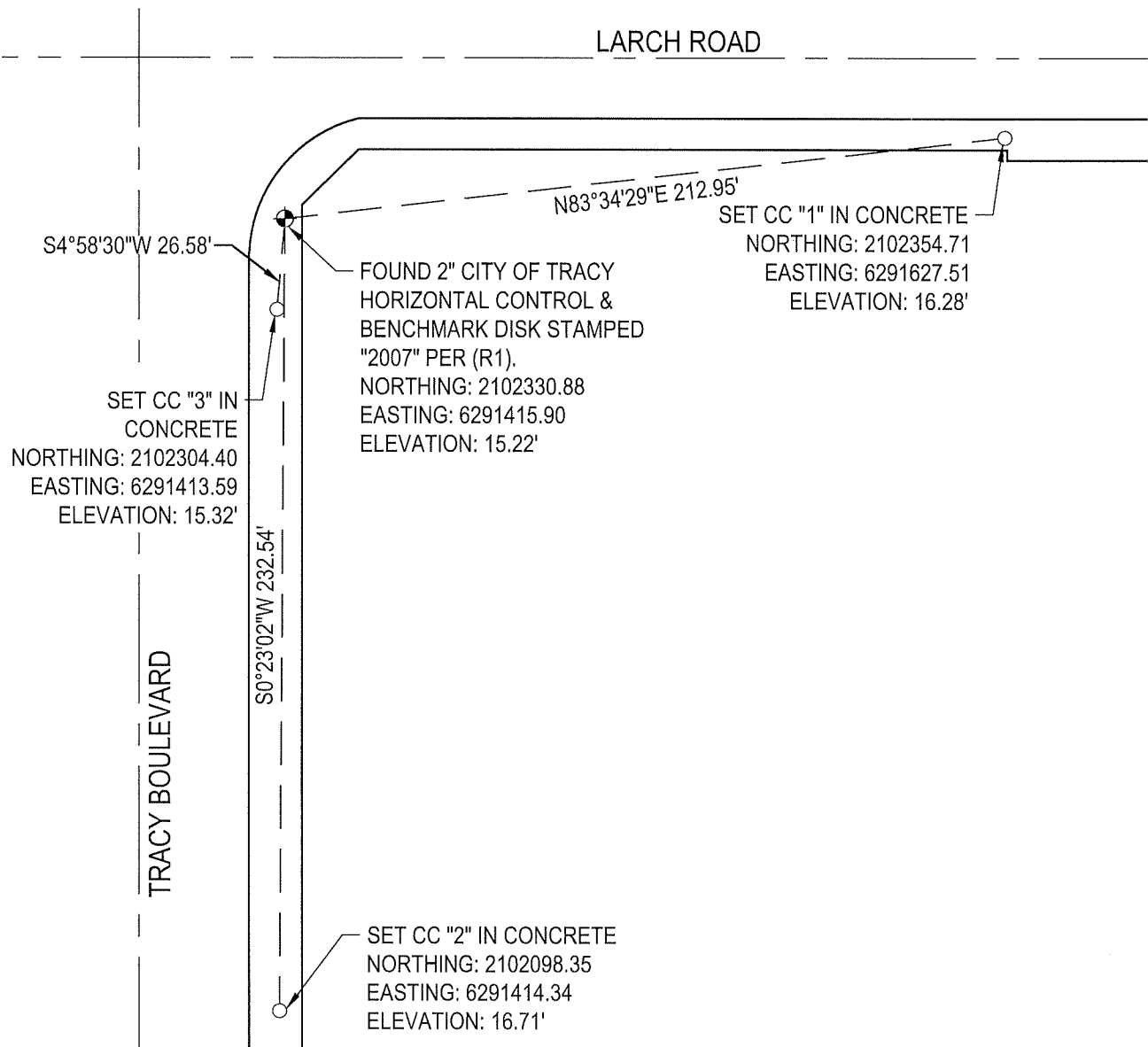
8657

Title

County Surveyor

County Surveyor's Comment



BASIS OF BEARINGS

BASIS OF BEARINGS: THE CALIFORNIA COORDINATE SYSTEM OF 1983 (CCS83),
ZONE 3, NAD83 (2011), EPOCH 2004.0.

SURVEYOR'S NOTE

THIS DOCUMENT IS BEING FILED TO COMPLY WITH THE PRE-CONSTRUCTION
MONUMENT PRESERVATION REQUIREMENTS OUTLINED IN SECTION 8771 OF THE
CALIFORNIA BUSINESS AND PROFESSIONS CODE. IT IS NOT THE OUTCOME OF A
FINALIZED BOUNDARY SURVEY FOR ANY SPECIFIC PARCEL OF REAL PROPERTY.

REFERENCES:

(R1) BOOK 36 OF SURVEYS, PAGE 118, S.J.C.R.

LEGEND

○	SURVEY TIE AS NOTED
⊕	BENCHMARK MONUMENT FOUND AS NOTED
CC	CHISELED CROSS
P.C.	PROPERTY CORNER
S.J.C.R.	SAN JOAQUIN COUNTY RECORDS

