

# CORNER RECORD

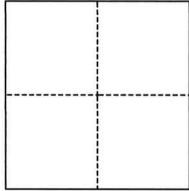
Agency Index

CR-25-335

Document Number

City of \_\_\_\_\_ County of San Joaquin, California

Brief Legal Description \_\_\_\_\_ Parcel B, P.M. 22-59

**CORNER TYPE****COORDINATES (Optional)**

- ☐ Government Corner ☐ Control  
☐ Meander ☒ Property  
☐ Rancho ☐ Other

Date of Survey May 20, 2025

N. \_\_\_\_\_ E. \_\_\_\_\_

Elevation \_\_\_\_\_

Units ☐ Metric ☐ U.S. Survey Foot

Horizontal Datum \_\_\_\_\_

Zone \_\_\_\_\_ Epoch Date \_\_\_\_\_

Vertical Datum \_\_\_\_\_

☐ Complies with Public Resources Code §§8801-8819☐ Complies with Public Resources Code §§8890-8902

PLS Act Ref.:

☐ 8765(d)☒ 8771☐ 8773☐ Other:Corner/  
Monument:☒ Left as found☐ Established☐ Rebuilt☐ Pre-Construction☐ Found and tagged☒ Reestablished☒ Referenced☒ Post-Construction

Narrative of corner identified and monument as found, set, reset, replaced, or removed:

☒ See sheet #2 for description(s):**SURVEYOR'S STATEMENT**

This Corner Record was prepared by me or under my direction in conformance with

the Professional Land Surveyors' Act on May 20, 2025

Signed

P.L.S. or R.C.E. No.

PLS 7889**COUNTY SURVEYOR'S STATEMENT**

This Corner Record was received

October 7, 2025

and examined and filed

October 28, 2025

Signed

P.L.S. or R.C.E. No.

8657

Title

County Surveyor

County Surveyor's Comment

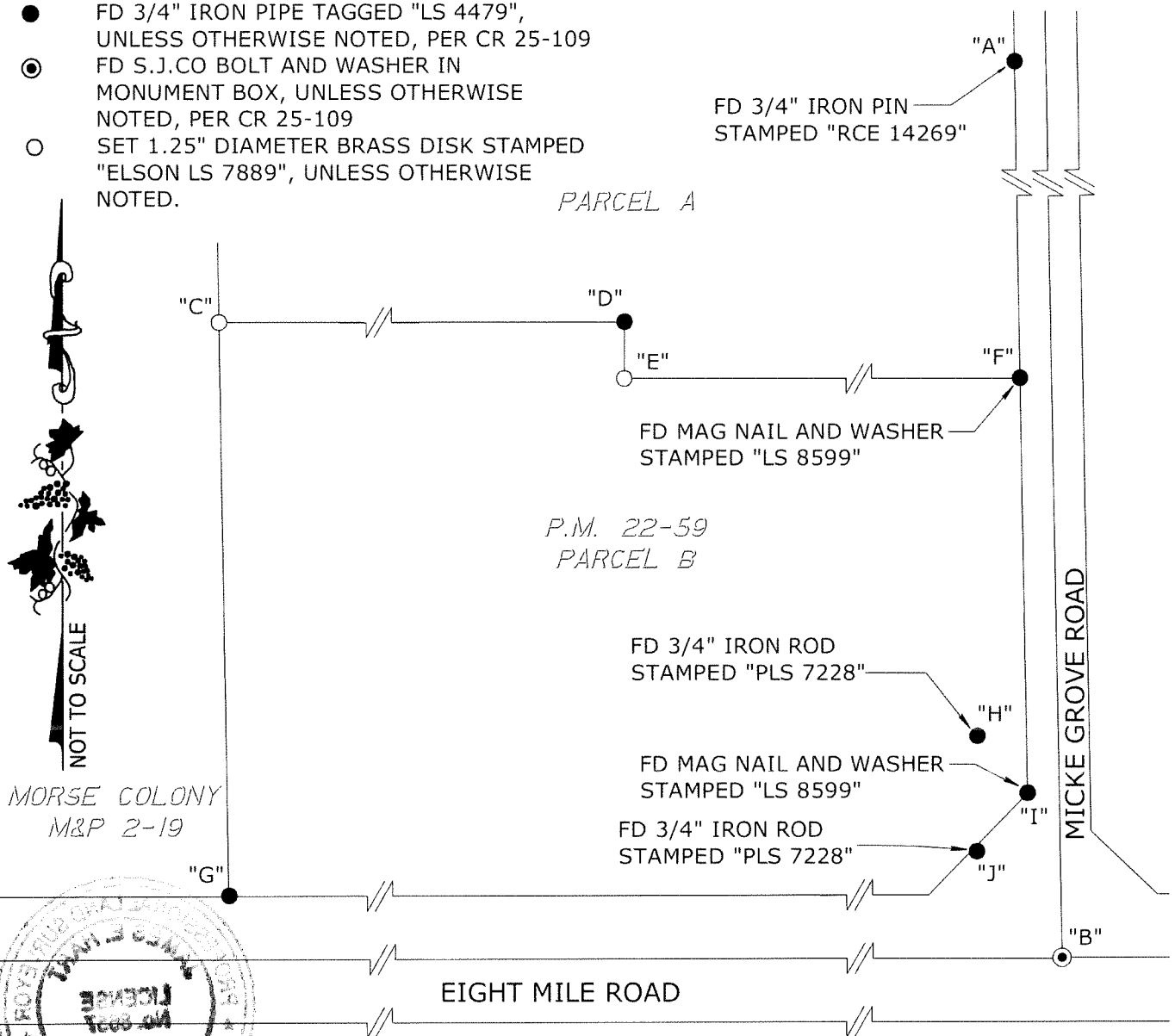


LEGEND:

- P.M. PARCEL MAP, BOOK AND PAGE, SAN JOAQUIN COUNTY RECORDS  
 M&P MAPS AND PLATS, VOLUME AND PAGE, SAN JOAQUIN COUNTY RECORDS  
 FD FOUND  
 CR CORNER RECORD, SAN JOAQUIN COUNTY SURVEYOR'S RECORDS
- FD 3/4" IRON PIPE TAGGED "LS 4479", UNLESS OTHERWISE NOTED, PER CR 25-109
  - ⊙ FD S.J.CO BOLT AND WASHER IN MONUMENT BOX, UNLESS OTHERWISE NOTED, PER CR 25-109
  - SET 1.25" DIAMETER BRASS DISK STAMPED "ELSON LS 7889", UNLESS OTHERWISE NOTED.

DESCRIPTION:

THIS CORNER RECORD IS FOR THE PURPOSE OF MONUMENT PRESERVATION. REFERENCES WERE FOUND AND/OR SET FOR FOUND MONUMENTS AS NOTED ON DIAGRAM. NO BOUNDARY ANALYSIS WAS PERFORMED. THIS CORNER RECORD DOES NOT VERIFY THE MONUMENT(S) TO BE IN THE CORRECT POSITION.



ANGLE AND DISTANCE TABLE

BS-O-FS	ANGLE	BS DISTANCE	FS DISTANCE
A-C-B	91°49'31"	1180.93'	757.60'
A-D-B	119°01'18"	1071.54'	551.41'
A-E-B	116°55'59"	1105.57'	525.90'
A-F-B	176°53'30"	1055.02'	368.61'
A-G-B	70°22'47"	1504.46'	636.96'
A-H-B	158°34'38"	1282.50'	150.04'
A-I-B	169°08'41"	1318.79'	106.20'
A-J-B	140°42'32"	1355.60'	86.03'