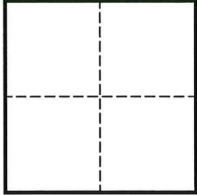


CORNER RECORD

Agency Index

CR-25-333

Document Number

City of _____ County of SAN JOAQUIN, CaliforniaBrief Legal Description MONUMENT AT THE CENTERLINE INTERSECTION OF SINCLAIR AVE & FARMINGTON RD**CORNER TYPE****COORDINATES (Optional)**

- ☐ Government Corner ☐ Control
☐ Meander ☐ Property
☐ Rancho ☒ Other

Date of Survey MARCH 12, 2025

N. _____ E. _____

Elevation _____

Units ☐ Metric ☐ U.S. Survey Foot

Horizontal Datum _____

Zone _____ Epoch Date _____

Vertical Datum _____

☐ Complies with Public Resources Code §§8801-8819☐ Complies with Public Resources Code §§8890-8902PLS Act Ref.: ☐ 8765(d) ☒ 8771 ☐ 8773 ☐ Other:

Corner/
Monument: ☒ Left as found ☐ Established ☐ Rebuilt ☐ Pre-Construction
☐ Found and tagged ☐ Reestablished ☒ Referenced ☒ Post-Construction

Narrative of corner identified and monument as found, set, reset, replaced, or removed:

☐ See sheet #2 for description(s):

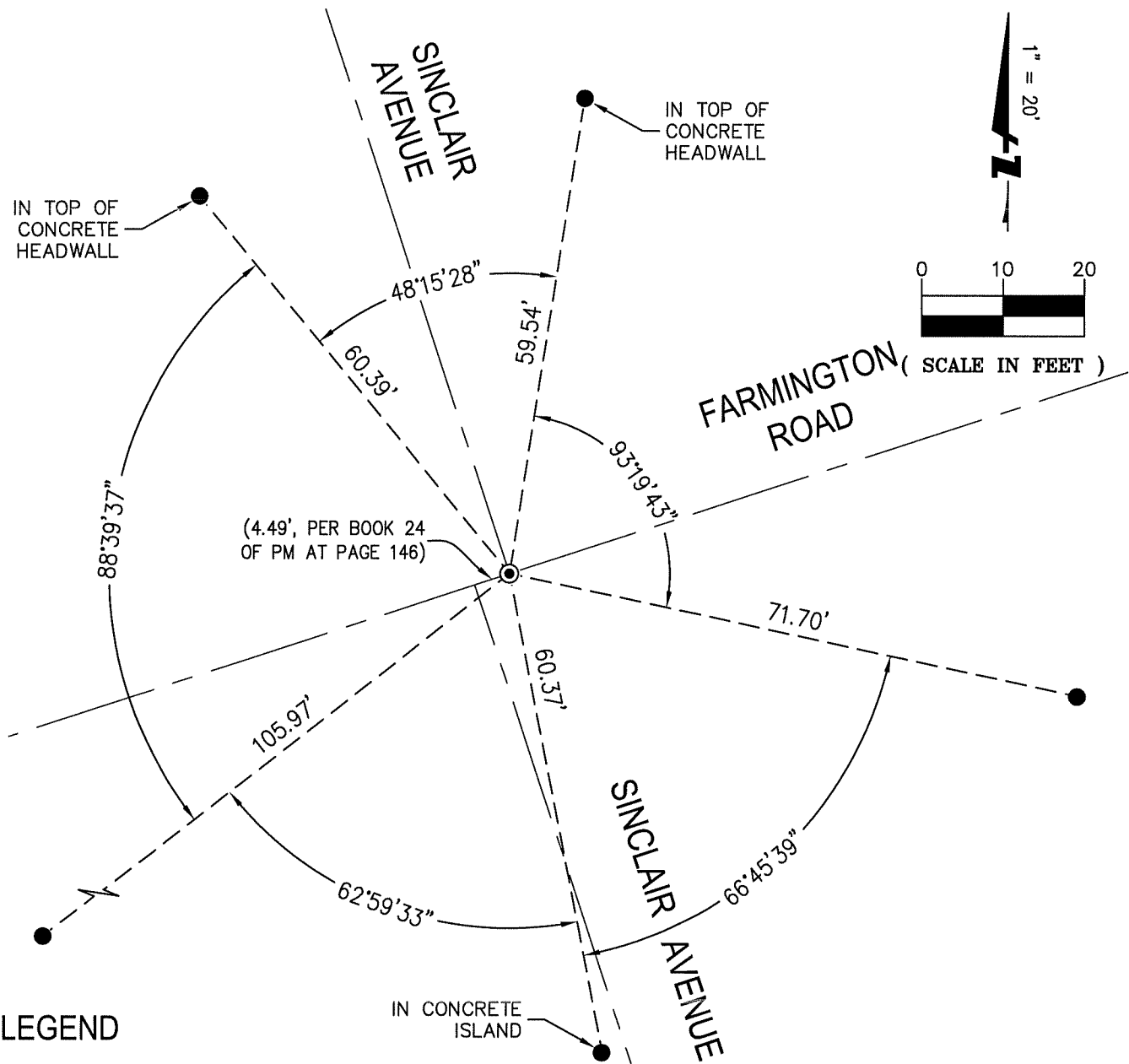
FOUND 3-1/2" BRASS DISK STAMPED "CITY OF STOCKTON SURVEY MONUMENT 14S-21 LS 6670", IN MONUMENT WELL, AT THE CENTERLINE INTERSECTION OF SINCLAIR AVENUE & FARMINGTON ROAD, PER BOOK 35 OF SURVEYS AT PAGE 5, SAN JOAQUIN COUNTY RECORDS.

THE MONUMENT WAS FOUND AS "UNDISTURBED" FOLLOWING CONSTRUCTION OF A WATERLINE PROJECT DONE BY WEST VALLEY CONSTRUCTION COMPANY.

SURVEYOR'S STATEMENT

This Corner Record was prepared by me or under my direction in conformance with

the Professional Land Surveyors' Act on MAY 12, 2025Signed [Signature] P.L.S. or R.C.E. No. 9251**COUNTY SURVEYOR'S STATEMENT**This Corner Record was received November 5, 2025and examined and filed November 6, 2025Signed James E. Hart P.L.S. or R.C.E. No. 8657Title County Surveyor**County Surveyor's Comment**



LEGEND

● FOUND 3-1/2" BRASS DISK STAMPED "CITY OF STOCKTON SURVEY MONUMENT 14S-21 LS 6670", IN MONUMENT WELL, PER BOOK 35 OF SURVEYS AT PAGE 5, SAN JOAQUIN COUNTY RECORDS.

● FOUND MAG NAIL & WASHER STAMPED "BKF SURVEY PLS 6868" IN TOP OF CONCRETE CURB, UNLESS OTHERWISE NOTED, PER CR-25-047, SAN JOAQUIN COUNTY SURVEYOR'S RECORDS.

PM PARCEL MAP, SAN JOAQUIN COUNTY RECORDS

CR CORNER RECORD

BKF

1730 N. FIRST STREET
SUITE 600
SAN JOSE, CA 95112
(408) 467-9100
www.bkf.com

SUBJECT POST-CONSTRUCTION CORNER RECORD
SINCLAIR AVE AND FARMINGTON RD

JOB NO. 20191483 - MON PRESERVATION
BY RDV APPR. JML DATE 05-12-2025