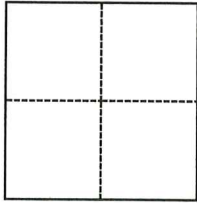


CORNER RECORD

Agency Index

CR-25-329

Document Number

City of STOCKTON County of SAN JOAQUIN, CaliforniaBrief Legal Description CHISELED CROSS ON SIDEWALK AT LOT 48 PER MAPS & PLATS 8-66**CORNER TYPE****COORDINATES (Optional)**

- ☐ Government Corner ☒ Control
☐ Meander ☐ Property
☐ Rancho ☐ Other

Date of Survey October 10, 2025

N. _____ E. _____

Elevation _____

Units



Metric



U.S. Survey Foot

Horizontal Datum _____

Zone _____

Epoch Date _____

Vertical Datum _____

☐ Complies with Public Resources Code §§8801-8819☐ Complies with Public Resources Code §§8890-8902

PLS Act Ref.:



8765(d)



8771



8773



Other:

Corner/
Monument:

Left as found



Established



Rebuilt



Pre-Construction



Found and tagged



Reestablished



Referenced



Post-Construction

Narrative of corner identified and monument as found, set, reset, replaced, or removed:

☒ See sheet #2 for description(s):

PRE-CONSTRUCTION CORNER RECORD. THIS DOCUMENT IS FOR THE PURPOSE OF PRESERVING AND ESTABLISHING REFERENCE TIES TO FOUND CHISELED CROSS, NOT TO SPECIFY HOW THIS CHISELED CROSS RELATES TO PROPERTY LINES.

SURVEYOR'S STATEMENT

This Corner Record was prepared by me or under my direction in conformance with

the Professional Land Surveyors' Act on October 17, 2025

Signed

P.L.S. or R.C.E. No.

L.S. 7600**COUNTY SURVEYOR'S STATEMENT**

This Corner Record was received

October 31, 2025

and examined and filed

November 4, 2025

Signed

P.L.S. or R.C.E. No.

8657

Title

County Surveyor

County Surveyor's Comment

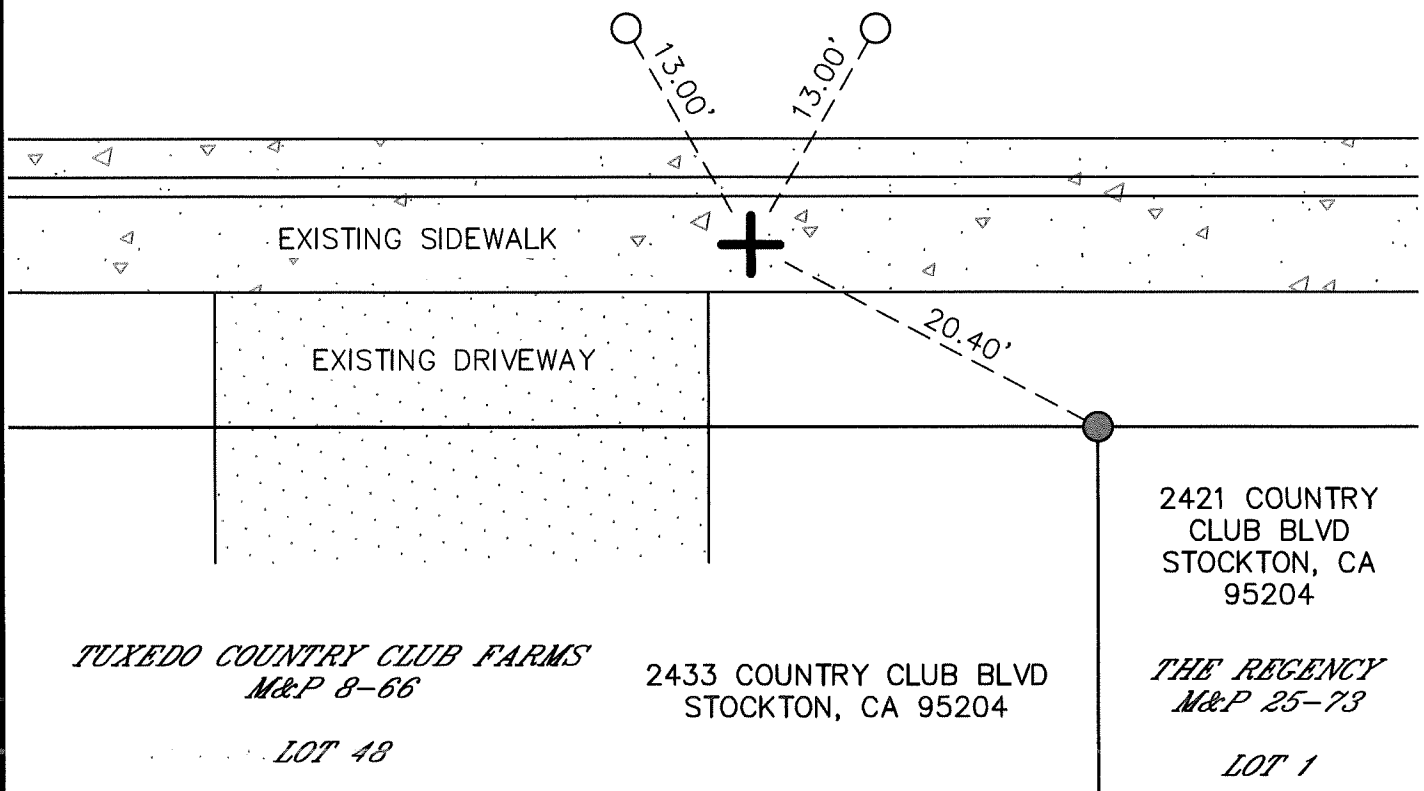
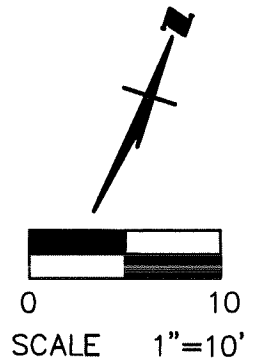


NOTE:

THE INTENT IS TO ESTABLISH
REFERENCE TIES TO FOUND
CHISELED CROSS, NOT TO
SPECIFY HOW THIS CHISELED
CROSS RELATES TO PROPERTY
LINES. MAP REFERENCES ARE
GEOGRAPHIC REFERENCES ONLY.

WEBSTER
AVENUE

OXFORD WAY



LEGEND:

M&P MAPS AND PLATS, BOOK-PAGE, SJCR
SJCR SAN JOAQUIN COUNTY RECORDS



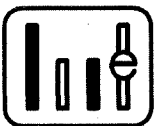
FOUND CHISELED CROSS IN SIDEWALK, NO REFERENCE



FOUND 3/4" IRON PIN PER M&P 25-73



SET PK NAIL WITH STEEL WASHER STAMPED L.S. 7600



WONG ENGINEERS, INC.

4578 FEATHER RIVER DRIVE, SUITE A
STOCKTON, CA 95219 (209) 476-0011
OCTOBER 17, 2025 PAGE 2 OF 2