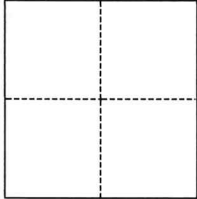


# CORNER RECORD

Agency Index

CR-25-326

Document Number

City of Stockton County of San Joaquin, CaliforniaBrief Legal Description Lots 370, 371 M&P 25-100**CORNER TYPE****COORDINATES (Optional)**

- ☐ Government Corner ☐ Control  
☐ Meander ☒ Property  
☐ Rancho ☐ Other

Date of Survey September 15, 2025

N. \_\_\_\_\_ E. \_\_\_\_\_

Elevation \_\_\_\_\_

Units ☐ Metric ☐ U.S. Survey Foot

Horizontal Datum \_\_\_\_\_

Zone \_\_\_\_\_ Epoch Date \_\_\_\_\_

Vertical Datum \_\_\_\_\_

☐ Complies with Public Resources Code §§8801-8819☐ Complies with Public Resources Code §§8890-8902

PLS Act Ref.:

☐ 8765(d)☒ 8771☐ 8773☐ Other:Corner/  
Monument:☒ Left as found☐ Established☐ Rebuilt☒ Pre-Construction☐ Found and tagged☐ Reestablished☒ Referenced☐ Post-Construction

Narrative of corner identified and monument as found, set, reset, replaced, or removed:

☒ See sheet #2 for description(s):**SURVEYOR'S STATEMENT**

This Corner Record was prepared by me or under my direction in conformance with

the Professional Land Surveyors' Act on September 15, 2025

Signed

P.L.S. or R.C.E. No.

PLS 7889**COUNTY SURVEYOR'S STATEMENT**

This Corner Record was received

October 30, 2025

and examined and filed

November 4, 2025

Signed

P.L.S. or R.C.E. No.

8657

Title

County Surveyor

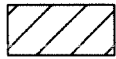
County Surveyor's Comment



**LEGEND:**

M.&P. MAPS AND PLATS, BOOK AND PAGE, SAN JOAQUIN COUNTY RECORDS

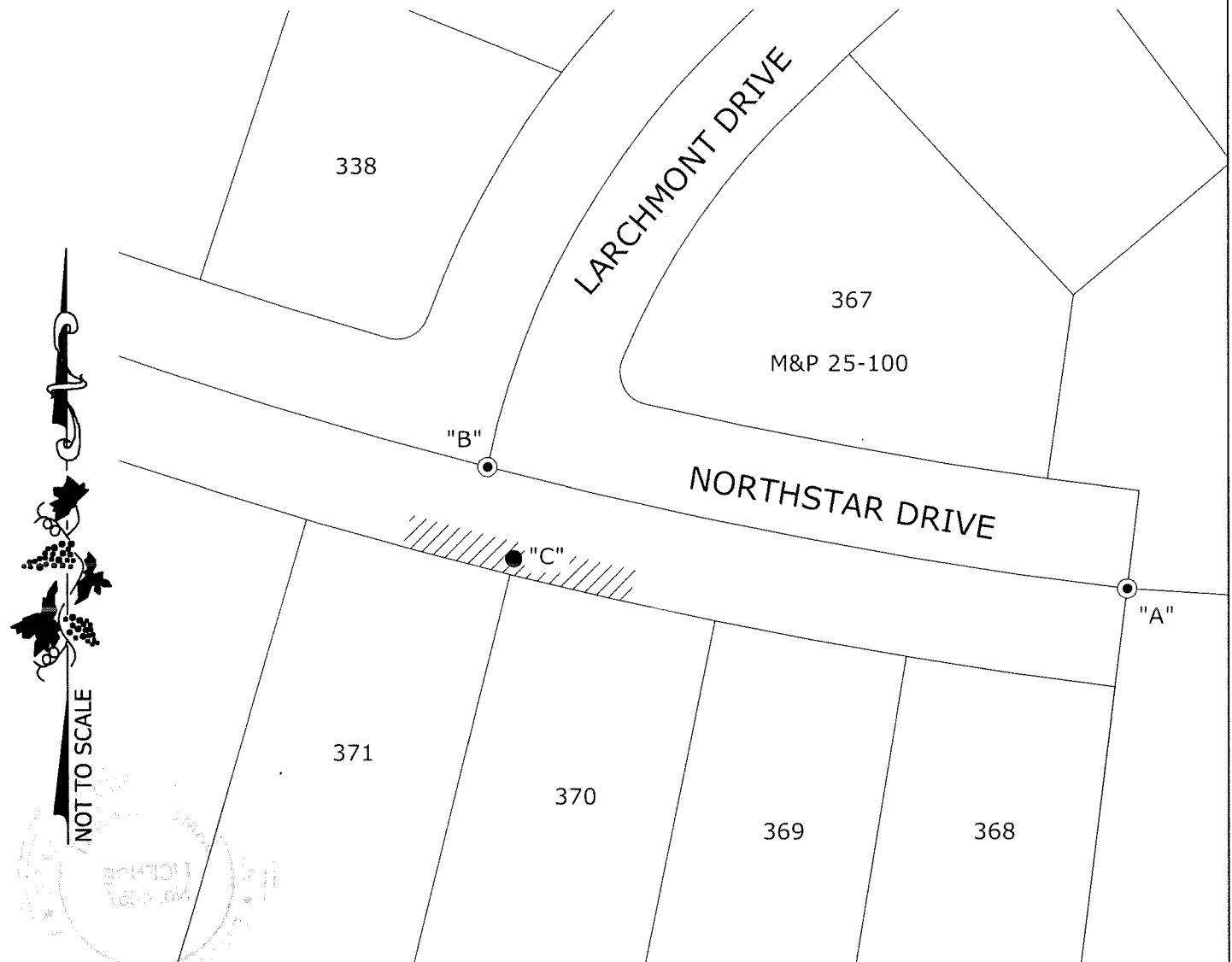
- FOUND CHISELED CROSS
- ⊙ FOUND 3/4" IRON ROD WITH CAP, STAMPED "RCE 15831" IN MONUMENT WELL



LIMITS OF CONSTRUCTION AREA

**DESCRIPTION:**

THIS CORNER RECORD IS FOR THE PURPOSE OF MONUMENT PRESERVATION. REFERENCES WERE FOUND AND/OR SET FOR FOUND MONUMENTS AS NOTED ON DIAGRAM. NO BOUNDARY ANALYSIS WAS PERFORMED. THIS CORNER RECORD DOES NOT VERIFY THE MONUMENT(S) TO BE IN THE CORRECT POSITION.



ANGLE AND DISTANCE TABLE

BS-O-FS	ANGLE	BS DISTANCE	FS DISTANCE
A-C-B	108°42'04"	187.06'	28.93'