

CORNER RECORD

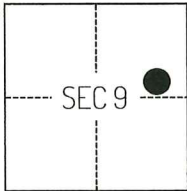
Agency Index

CR-25-325

Document Number

City of STOCKTON County of SAN JOAQUIN, California

Brief Legal Description FOUND MONUMENT AS SHOWN ON CORNER RECORD 24-325, SAN JOAQUIN COUNTY SURVEYOR'S RECORDS.

CORNER TYPE**COORDINATES (Optional)**

WEBER GRANT

- ☐ Government Corner ☐ Control
☐ Meander ☒ Property
☐ Rancho ☐ Other

Date of Survey APRIL 3, 2025

N. E.

Elevation

Units ☐ Metric ☒ U.S. Survey Foot

Horizontal Datum

Zone Epoch Date

Vertical Datum

☐ Complies with Public Resources Code §§8801-8819☐ Complies with Public Resources Code §§8890-8902

PLS Act Ref.:

☐ 8765(d)☒ 8771☐ 8773☐ Other:Corner/
Monument:☒ Left as found☐ Established☐ Rebuilt☐ Pre-Construction☐ Found and tagged☐ Reestablished☒ Referenced☒ Post-Construction

Narrative of corner identified and monument as found, set, reset, replaced, or removed:

☒ See sheet #2 for description(s):

THE FOUND MONUMENT SHOWN ON THIS CORNER RECORD WERE FOUND AT THE LOCATION OF THE CORNER(S) ON CR-24-325, SAN JOAQUIN COUNTY SURVEYOR'S RECORDS. I DID NOT VERIFY THE IDENTITY AND VALIDITY OF THE MONUMENT FOUND AS ACTUALLY MARKING THE PROPERTY CORNER.

SURVEYOR'S STATEMENT

This Corner Record was prepared by me or under my direction in conformance with

the Professional Land Surveyors' Act on MAY 8, 2025

Signed

P.L.S. or R.C.E. No.

8489

**COUNTY SURVEYOR'S STATEMENT**

This Corner Record was received

October 27, 2025

and examined and filed

November 4, 2025

Signed

P.L.S. or R.C.E. No.

8657

Title

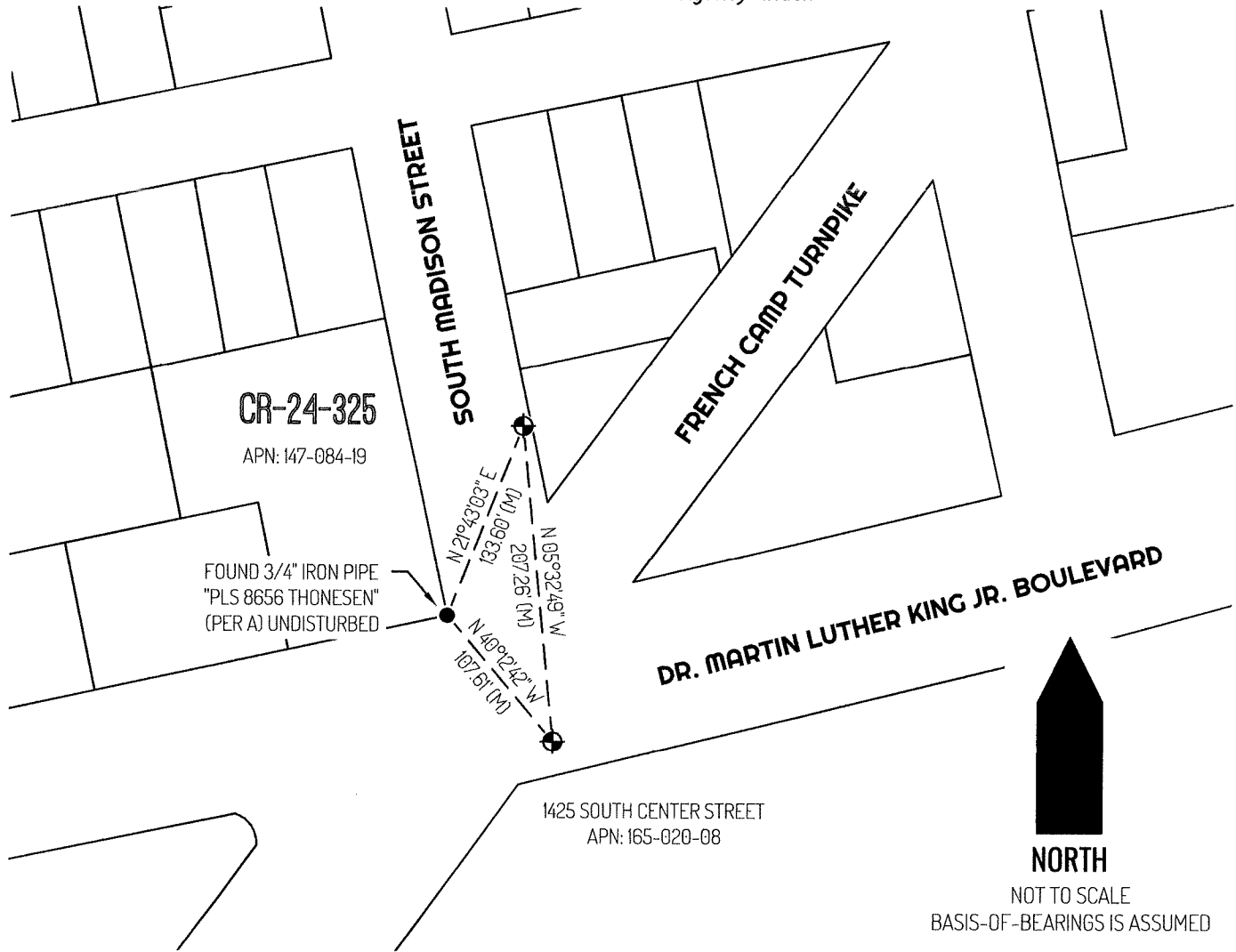
County Surveyor

County Surveyor's Comment



Document Number

Agency Index



LEGEND

●	FOUND MONUMENT AS NOTED
⊕	FOUND BRASS PLUG IN CONCRETE LS 8489 PER (A) UNDISTURBED
1425	REFERENCE STREET ADDRESS
CR	CORNER RECORD, SAN JOAQUIN COUNTY SURVEYOR'S RECORDS
APN	TAX ASSESSOR PARCEL NUMBER
(M)	MEASURED
---	TIE LINE
---	LOT LINE

REFERENCE

(A) CORNER RECORD 24-325, SAN JOAQUIN COUNTY SURVEYOR'S RECORDS