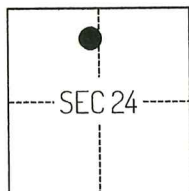


CORNER RECORD

Agency Index

CR-25-324

Document Number

City of LODI County of SAN JOAQUIN, CaliforniaBrief Legal Description FOUND MONUMENTS AS SHOWN ON CORNER RECORD 25-153, SAN JOAQUIN COUNTY SURVEYOR'S RECORDS**CORNER TYPE****COORDINATES (Optional)**

T3N/R6E

- ☐ Government Corner ☐ Control
☐ Meander ☒ Property
☐ Rancho ☐ Other

Date of Survey JULY 22, 2025

N. _____ E. _____

Elevation _____

Units ☐ Metric ☒ U.S. Survey Foot

Horizontal Datum _____

Zone _____ Epoch Date _____

Vertical Datum _____

☐ Complies with Public Resources Code §§8801-8819☐ Complies with Public Resources Code §§8890-8902

PLS Act Ref.:

☐ 8765(d)☒ 8771☐ 8773☐ Other:Corner/
Monument:☒ Left as found☐ Established☐ Rebuilt☐ Pre-Construction☐ Found and tagged☐ Reestablished☒ Referenced☒ Post-Construction

Narrative of corner identified and monument as found, set, reset, replaced, or removed:

☒ See sheet #2 for description(s):

THE FOUND MONUMENT(S) SHOWN ON THIS CORNER RECORD WERE FOUND IN THE LOCATION OF THE CORNER(S) ON CORNER RECORD 25-153, SAN JOAQUIN COUNTY SURVEYOR'S RECORDS. I DID NOT VERIFY THE IDENTITY AND VALIDITY OF THE MONUMENT(S) FOUND AS ACTUALLY MARKING THE PROPERTY CORNER(S).

SURVEYOR'S STATEMENT

This Corner Record was prepared by me or under my direction in conformance with

the Professional Land Surveyors' Act on AUGUST 6, 2025

Signed

P.L.S. or R.C.E. No.

8489

**COUNTY SURVEYOR'S STATEMENT**

This Corner Record was received

October 27, 2025

and examined and filed

November 4, 2025

Signed

P.L.S. or R.C.E. No.

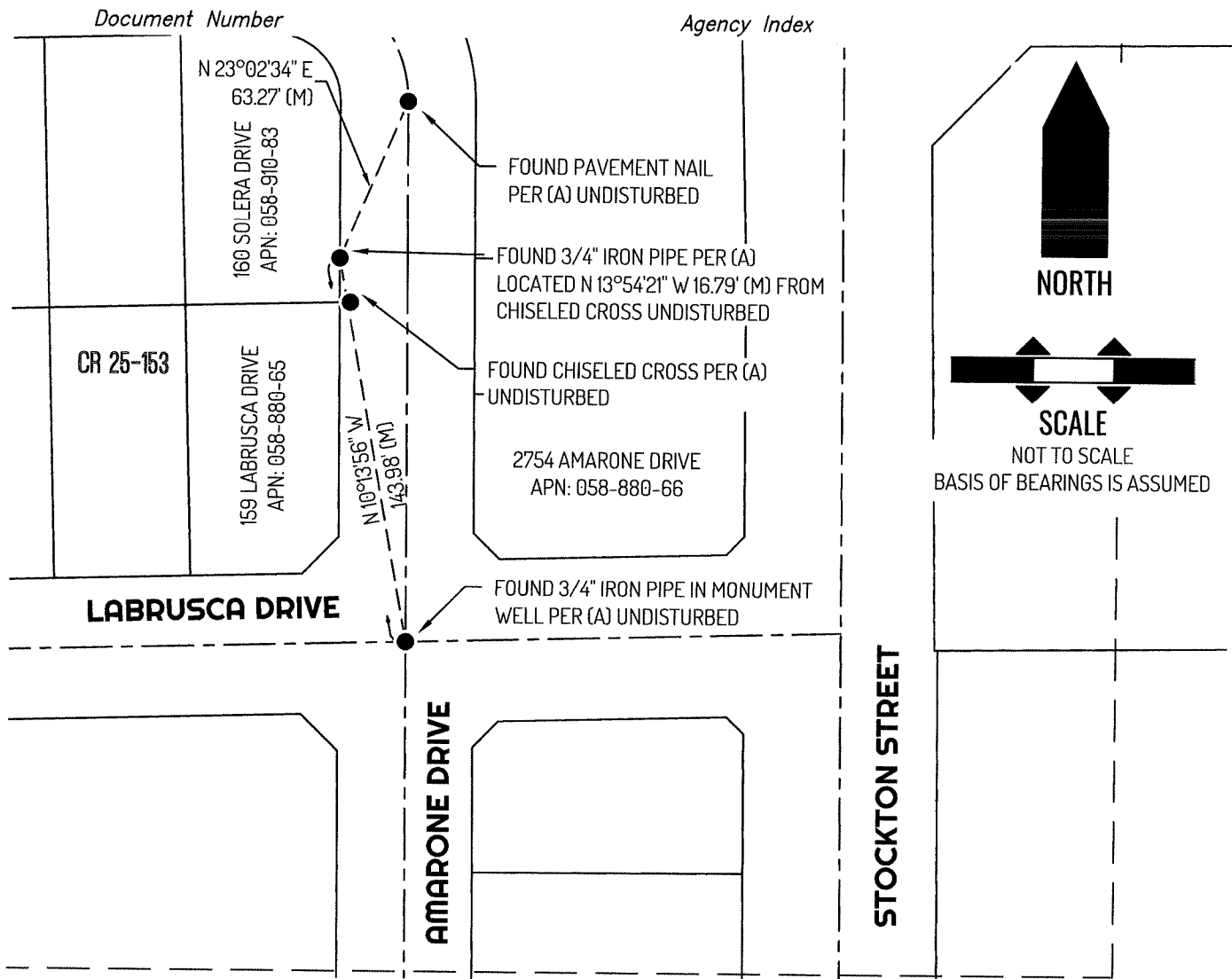
8657

Title

County Surveyor

County Surveyor's Comment





LEGEND

●	FOUND MONUMENT AS NOTED
160	REFERENCE STREET ADDRESS
CR	CORNER RECORD, SAN JOAQUIN COUNTY SURVEYOR'S RECORDS
APN	TAX ASSESSOR PARCEL NUMBER
---	TIE LINE
---	LOT LINE
---	RIGHT-OF-WAY CENTERLINE
(M)	MEASURED

REFERENCE

(A) CORNER RECORD 25-153, SAN JOAQUIN COUNTY SURVEYOR'S RECORDS