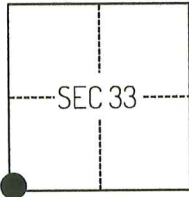


CORNER RECORD

Agency Index

CR-25-323

Document Number

City of _____ County of SAN JOAQUIN, CaliforniaBrief Legal Description FOUND MONUMENTS AT THE INTERSECTION OF DUSTIN ROAD AND LIBERTY ROAD.**CORNER TYPE****COORDINATES (Optional)**

T5N/R7E

- ☒ Government Corner ☐ Control
☐ Meander ☐ Property
☐ Rancho ☐ Other

Date of Survey JULY 22, 2025

N. _____ E. _____

Elevation _____

Units ☐ Metric ☒ U.S. Survey Foot

Horizontal Datum _____

Zone _____ Epoch Date _____

Vertical Datum _____

☐ Complies with Public Resources Code §§8801-8819☐ Complies with Public Resources Code §§8890-8902

PLS Act Ref.:

☐ 8765(d)☒ 8771☐ 8773☐ Other:Corner/
Monument:☒ Left as found☐ Established☐ Rebuilt☐ Pre-Construction☐ Found and tagged☐ Reestablished☒ Referenced☒ Post-Construction

Narrative of corner identified and monument as found, set, reset, replaced, or removed:

☒ See sheet #2 for description(s):**SURVEYOR'S STATEMENT**

This Corner Record was prepared by me or under my direction in conformance with

the Professional Land Surveyors' Act on JULY 25, 2025

Signed

P.L.S. or R.C.E. No.

8489**COUNTY SURVEYOR'S STATEMENT**

This Corner Record was received

October 27, 2025

and examined and filed

November 4, 2025

Signed

P.L.S. or R.C.E. No.

8657

Title

County Surveyor

County Surveyor's Comment



Document Number

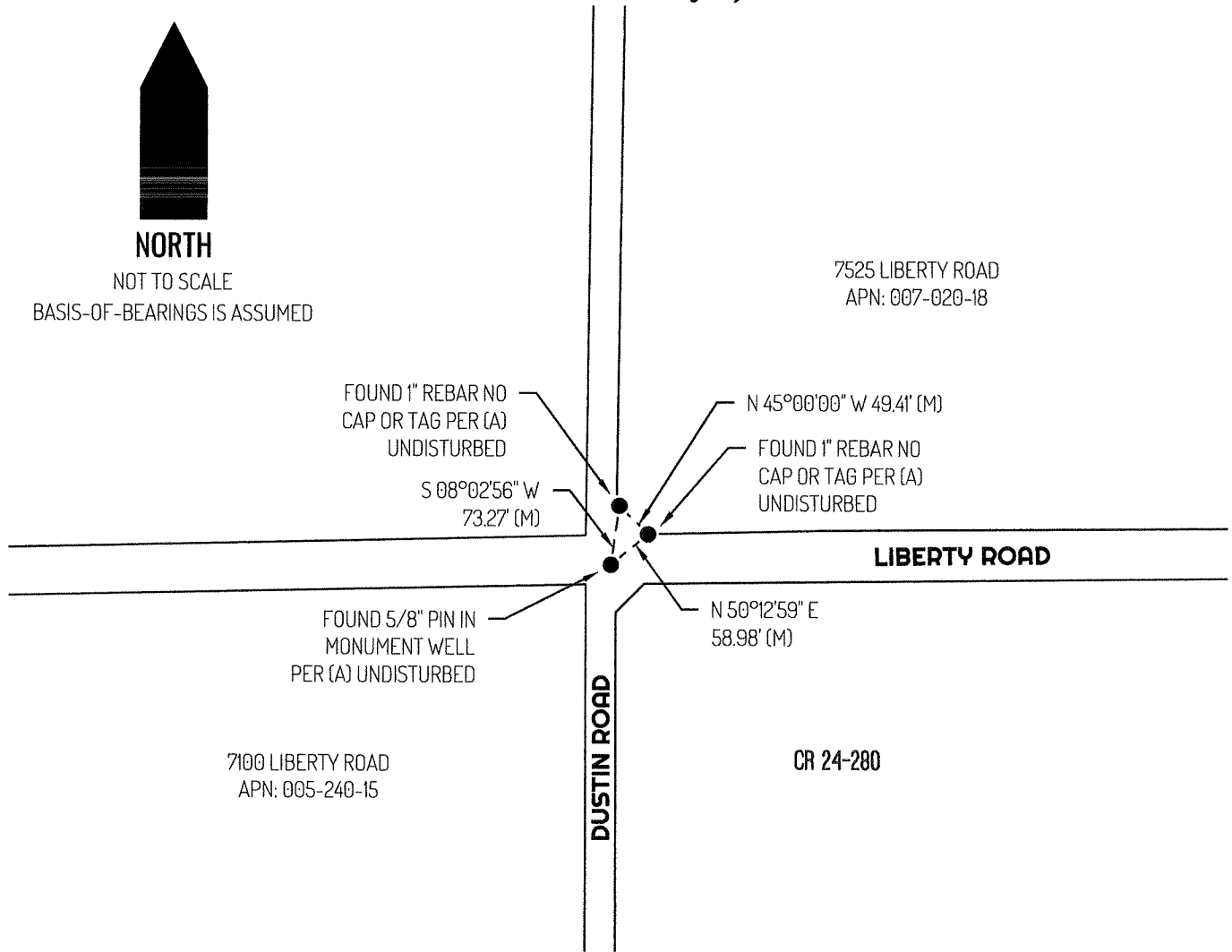
Agency Index



NORTH

NOT TO SCALE

BASIS-OF-BEARINGS IS ASSUMED



LEGEND

●	FOUND MONUMENT AS NOTED
7525	REFERENCE STREET ADDRESS
APN	TAX ASSESSOR PARCEL NUMBER
CR	CORNER RECORD, SAN JOAQUIN COUNTY SURVEYOR'S RECORDS
(M)	MEASURED
---	TIE LINE
---	LOT LINE

REFERENCE

(A) CORNER RECORD 24-280, SAN JOAQUIN COUNTY SURVEYOR'S RECORDS