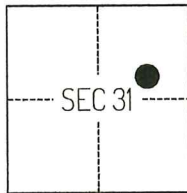


CORNER RECORD

Agency Index

CR-25-321

Document Number

City of _____ County of SAN JOAQUIN, CaliforniaBrief Legal Description FOUND MONUMENT ON NORTH SIDE OF JUNIPER AVENUE, PER CR-24-497 SAN JOAQUIN COUNTYSURVEYOR'S RECORDS.**CORNER TYPE****COORDINATES (Optional)**

T4N/R8E

- ☐ Government Corner ☐ Control
☐ Meander ☒ Property
☐ Rancho ☐ Other

Date of Survey APRIL 9, 2025

N. _____ E. _____

Elevation _____

Units ☐ Metric ☒ U.S. Survey Foot

Horizontal Datum _____

Zone _____ Epoch Date _____

Vertical Datum _____

☐ Complies with Public Resources Code §§8801-8819☐ Complies with Public Resources Code §§8890-8902

PLS Act Ref.:

☐ 8765(d)☒ 8771☐ 8773☐ Other:Corner/
Monument:☒ Left as found☐ Established☐ Rebuilt☐ Pre-Construction☐ Found and tagged☐ Reestablished☒ Referenced☒ Post-Construction

Narrative of corner identified and monument as found, set, reset, replaced, or removed:

☒ See sheet #2 for description(s):

THE FOUND MONUMENT(S) SHOWN ON THIS CORNER RECORD WERE FOUND IN THE APPROXIMATE LOCATION OF THE CORNER(S) ON CR-24-497, SAN JOAQUIN COUNTY SURVEYOR'S RECORDS. I DID NOT VERIFY THE IDENTITY AND VALIDITY OF THE MONUMENT FOUND AS ACTUALLY MARKING THE PROPERTY CORNER.

SURVEYOR'S STATEMENT

This Corner Record was prepared by me or under my direction in conformance with

the Professional Land Surveyors' Act on MAY 5, 2025

Signed

P.L.S. or R.C.E. No.

8489

**COUNTY SURVEYOR'S STATEMENT**

This Corner Record was received

October 27, 2025

and examined and filed

November 4, 2025

Signed

P.L.S. or R.C.E. No.

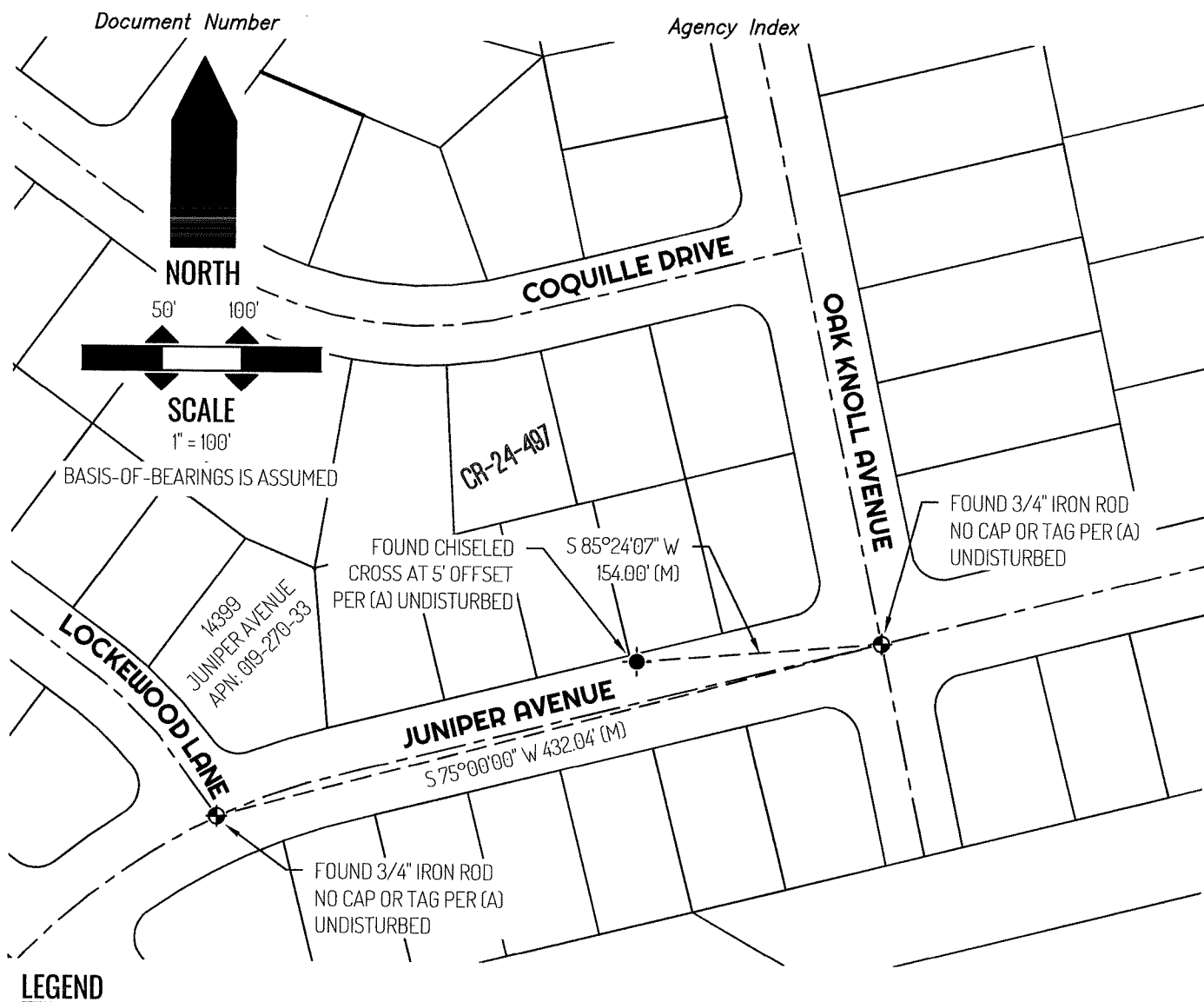
8657

Title

County Surveyor

County Surveyor's Comment





•
•
14399
CR
APN
(M)

FOUND MONUMENT AS NOTED
FOUND CONTROL POINT AS NOTED
REFERENCE STREET ADDRESS
CORNER RECORD, SAN JOAQUIN COUNTY SURVEYOR'S RECORDS
TAX ASSESSOR PARCEL NUMBER
MEASURED
TIE LINE
LOT LINE
RIGHT-OF-WAY CENTERLINE

REFERENCE

(A) CORNER RECORD 24-497, SAN JOAQUIN COUNTY SURVEYOR'S RECORDS