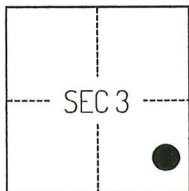


CORNER RECORD

Agency Index

CR-25-306

Document Number

City of LODI County of SAN JOAQUIN, CaliforniaBrief Legal Description FOUND MONUMENTS ALONG THE WEST RIGHT-OF-WAY LINE OF MILLS AVENUE PER CORNER RECORD 24-205, SAN JOAQUIN COUNTY SURVEYOR'S RECORDS.**CORNER TYPE****COORDINATES (Optional)**

T3N/R6E

- ☐ Government Corner ☐ Control
☐ Meander ☒ Property
☐ Rancho ☐ Other

Date of Survey May 6, 2025

N. _____ E. _____

Elevation _____

Units ☐ Metric ☒ U.S. Survey Foot

Horizontal Datum _____

Zone _____ Epoch Date _____

Vertical Datum _____

☐ Complies with Public Resources Code §§8801-8819☐ Complies with Public Resources Code §§8890-8902

PLS Act Ref.:

☐ 8765(d)☒ 8771☐ 8773☐ Other:Corner/
Monument:☒ Left as found☐ Established☐ Rebuilt☐ Pre-Construction☐ Found and tagged☐ Reestablished☒ Referenced☒ Post-Construction

Narrative of corner identified and monument as found, set, reset, replaced, or removed:

☒ See sheet #2 for description(s):

THE FOUND MONUMENT(S) SHOWN ON THIS CORNER RECORD WERE FOUND AT THE LOCATION OF THE CORNER(S) ON CORNER RECORD 24-205, SAN JOAQUIN COUNTY SURVEYOR'S RECORDS. I DID NOT VERIFY THE IDENTITY AND VALIDITY OF THE MONUMENT(S) FOUND AS ACTUALLY MARKING THE PROPERTY CORNER.

SURVEYOR'S STATEMENT

This Corner Record was prepared by me or under my direction in conformance with

the Professional Land Surveyors' Act on June 17, 2025

Signed

P.L.S. or R.C.E. No.

8489**COUNTY SURVEYOR'S STATEMENT**

This Corner Record was received

September 26, 2025

and examined and filed

September 30, 2025

Signed

P.L.S. or R.C.E. No.

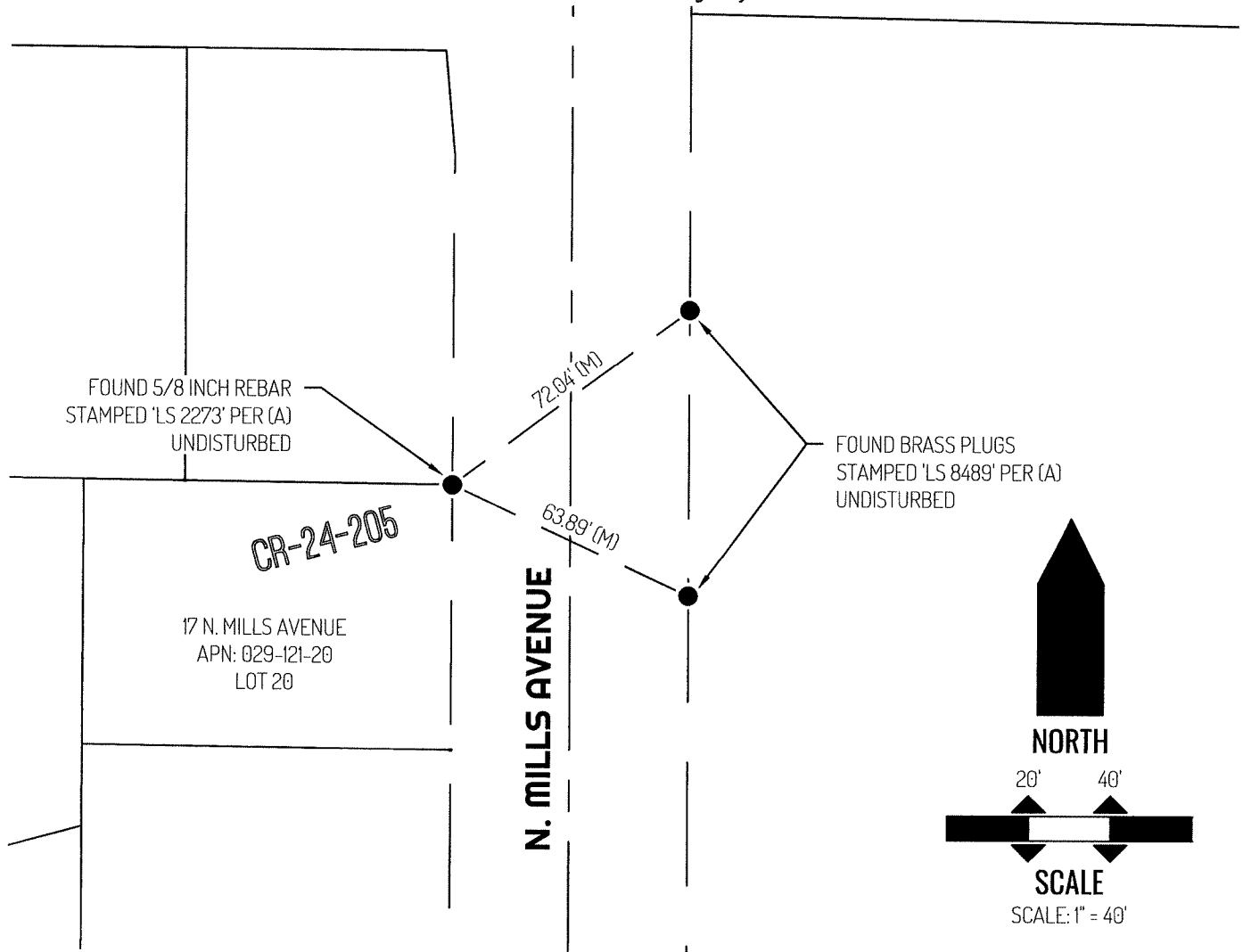
8657

Title

County Surveyor

County Surveyor's Comment





LEGEND

●	FOUND MONUMENT AS NOTED
17	REFERENCE STREET ADDRESS
CR	CORNER RECORD, SAN JOAQUIN COUNTY SURVEYOR'S RECORDS
APN	TAX ASSESSOR PARCEL NUMBER
(M)	MEASURED
— — — — —	TIE LINE
=====	LOT LINE
=====	RIGHT-OF-WAY SIDELINE
=====	RIGHT-OF-WAY CENTERLINE

REFERENCE

(A) CORNER RECORD 24-205, SAN JOAQUIN COUNTY SURVEYOR'S RECORDS