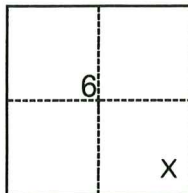


CORNER RECORD

Agency Index

CR-25-305

Document Number

City of _____ County of San Joaquin, CaliforniaBrief Legal Description North Line of Parcel 1, per P.M. 24-77, S.J.C.R.**CORNER TYPE****COORDINATES (Optional)**

- ☐ Government Corner ☐ Control
☐ Meander ☒ Property
☐ Rancho ☐ Other

Date of Survey August 22, 2025

N. _____ E. _____

Elevation _____

Units ☐ Metric ☐ U.S. Survey Foot

Horizontal Datum _____

Zone _____ Epoch Date _____

Vertical Datum _____

☐ Complies with Public Resources Code §§8801-8819☐ Complies with Public Resources Code §§8890-8902

T.2N., R.8E., M.D.B.&M.

PLS Act Ref.:

☐ 8765(d)☒ 8771☐ 8773☐ Other:Corner/
Monument:☐ Left as found☐ Established☐ Rebuilt☐ Pre-Construction☐ Found and tagged☒ Reestablished☐ Referenced☐ Post-Construction

Narrative of corner identified and monument as found, set, reset, replaced, or removed:

☒ See sheet #2 for description(s):**SURVEYOR'S STATEMENT**

This Corner Record was prepared by me or under my direction in conformance with

the Professional Land Surveyors' Act on

September 19, 2025

Signed

(P.L.S. or R.C.E. No.

7269**COUNTY SURVEYOR'S STATEMENT**

This Corner Record was received

September 24, 2025

and examined and filed

September 30, 2025

Signed

P.L.S. or R.C.E. No.

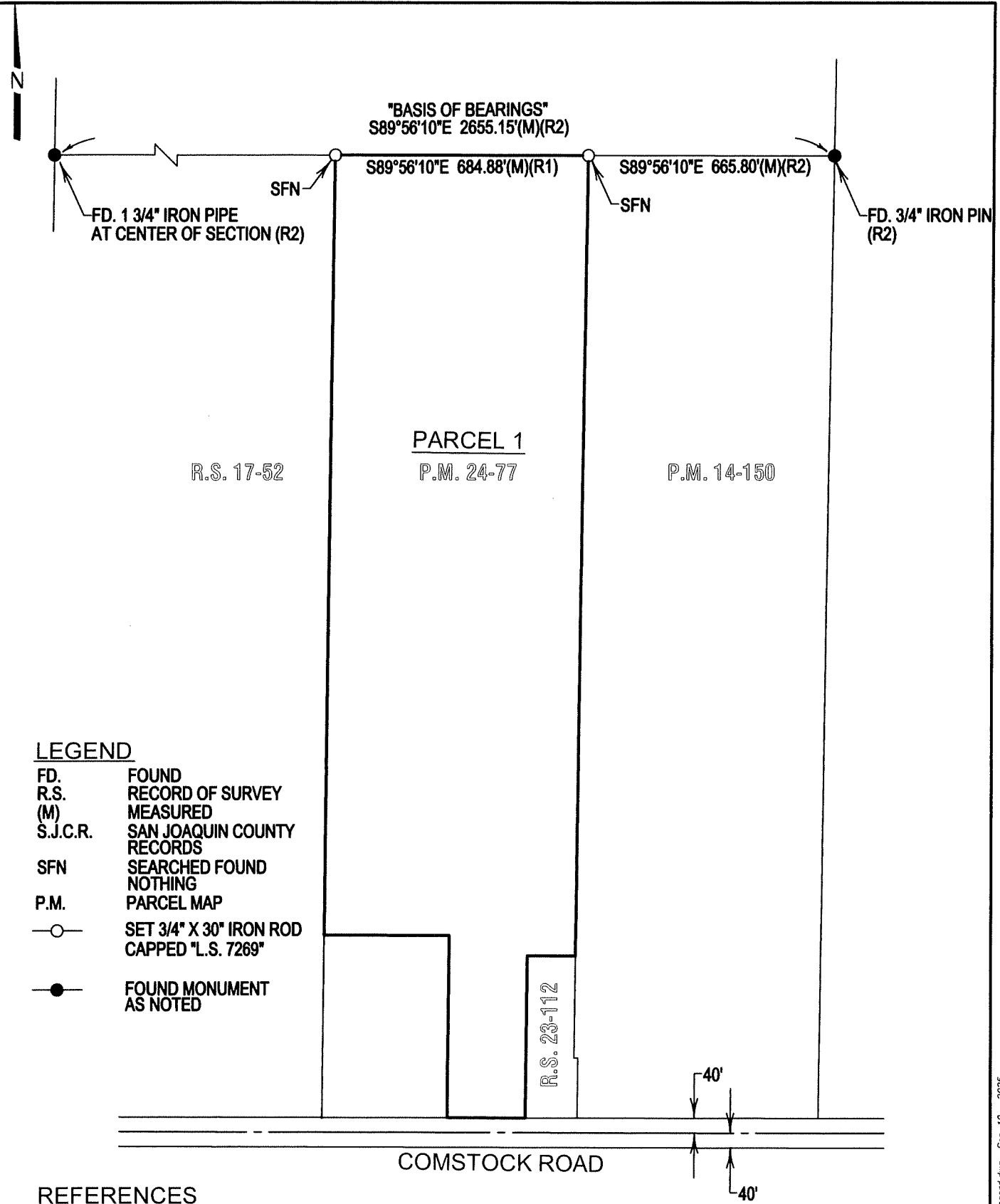
8657

Title

County Surveyor

County Surveyor's Comment





LEGEND

FD. FOUND
R.S. RECORD OF SURVEY
(M) MEASURED
S.J.C.R. SAN JOAQUIN COUNTY RECORDS
SFN SEARCHED FOUND NOTHING
P.M. PARCEL MAP
—○— SET 3/4" X 30" IRON ROD CAPPED "L.S. 7269"
—●— FOUND MONUMENT AS NOTED

REFERENCES

(R1) P.M. 24-77, S.J.C.R.
(R2) R.S. 17-52, S.J.C.R.