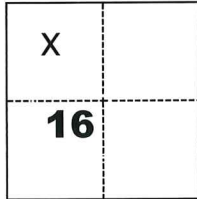


# CORNER RECORD

Agency Index CR-25-304  
Document Number \_\_\_\_\_

City of \_\_\_\_\_ County of SAN JOAQUIN, California  
Brief Legal Description LOT 13, OF 11 M&P 28, S.J.C.R.

## CORNER TYPE



- ☐ Government Corner ☐ Control  
☐ Meander ☒ Property  
☐ Rancho ☐ Other

Date of Survey August 10, 2025

## COORDINATES (Optional)

N. \_\_\_\_\_ E. \_\_\_\_\_  
Elevation \_\_\_\_\_  
Units ☐ Metric ☒ U.S. Survey Foot  
Horizontal Datum \_\_\_\_\_  
Zone \_\_\_\_\_ Epoch Date \_\_\_\_\_  
Vertical Datum \_\_\_\_\_  
☐ Complies with Public Resources Code §§8801-8819  
☐ Complies with Public Resources Code §§8890-8902

T2N.,R6E.

PLS Act Ref.: ☐ 8765(d) ☒ 8771 ☐ 8773 ☐ Other:  
Corner/  
Monument: ☒ Left as found ☐ Established ☐ Rebuilt ☒ Pre-Construction  
☐ Found and tagged ☐ Reestablished ☒ Referenced ☐ Post-Construction

Narrative of corner identified and monument as found, set, reset, replaced, or removed:

☒ See sheet #2 for description(s):

FOUND 1" AXLE ROD WITH NO TAG ON THE SOUTHEAST CORNER LOT 13, 11 M&P 28, SAN JOAQUIN COUNTY RECORDS. See Map on page 2 of this corner record.

## SURVEYOR'S STATEMENT

This Corner Record was prepared by me or under my direction in conformance with  
the Professional Land Surveyors' Act on August 15, 2025  
Signed Ron Monsour (P.L.S.) or R.C.E. No. 8474

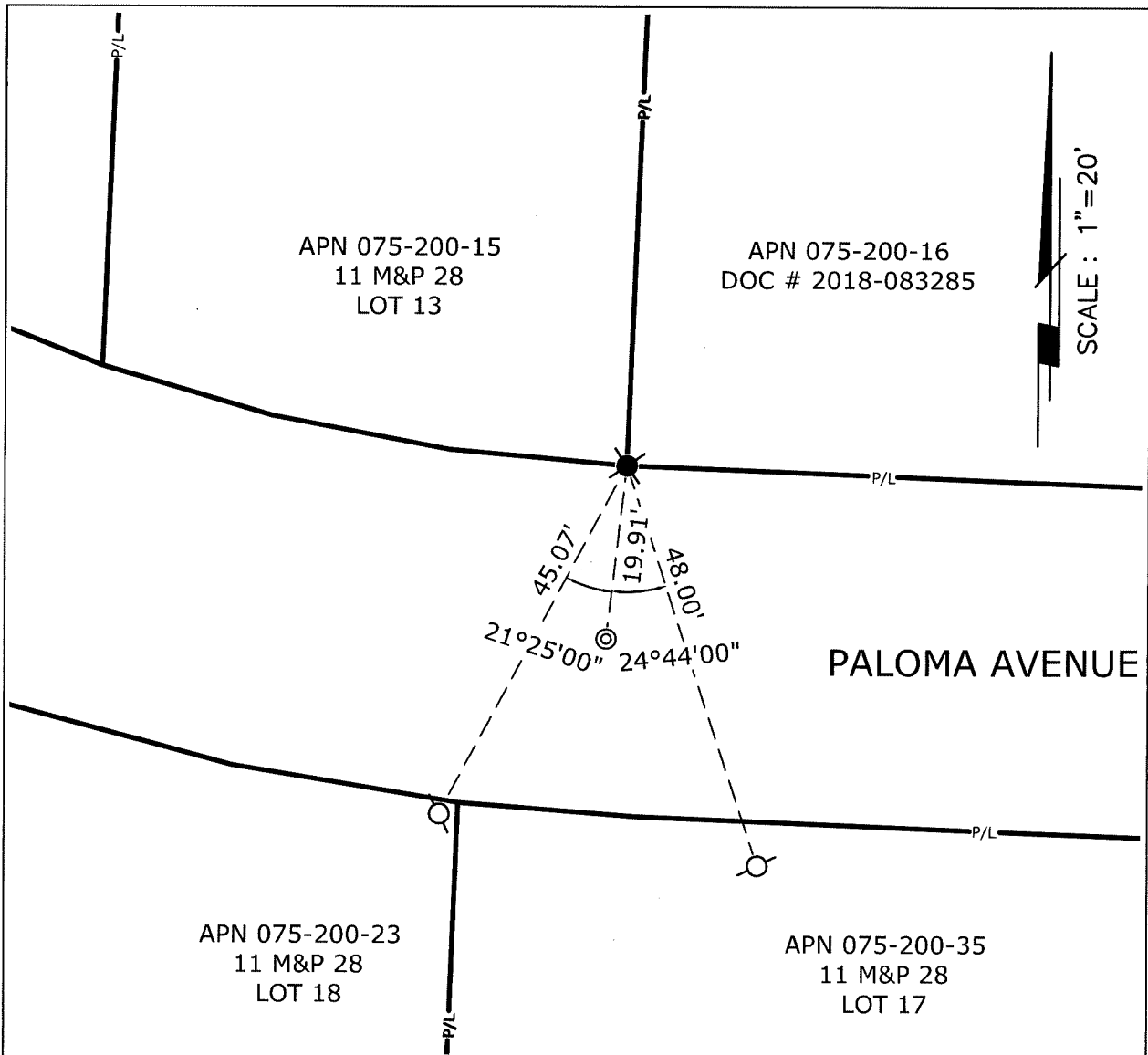


## COUNTY SURVEYOR'S STATEMENT

This Corner Record was received September 15, 2025  
and examined and filed September 30, 2025  
Signed James E. Hart P.L.S. or R.C.E. No. 8657  
Title County Surveyor



County Surveyor's Comment

**LEGEND:**

- ✱ FOUND 1" AXLE ROD W/ NO TAG
- ⊗ SET 5/8" REBAR W/ R.E.Y. CAP
- ⊙ MAG NAIL WITH WASHER

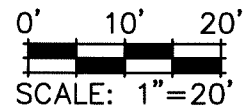
S.J.C.R. SAN JOAQUIN COUNTY RECORDS

APN ASSESSOR'S PARCEL NUMBER

M&amp;P MAPS &amp; PLATS

**REFERENCE:**

11 M&amp;P 28, S.J.C.R.



NOTE: THE PURPOSE OF THIS CORNER RECORD IS TO PERPETUATE THE POSITION(S) OF EXISTING MONUMENT(S). NO REPRESENTATION IS MADE TO ANY RELATIVE POSITION(S) OF SAID MONUMENT(S). ALL RIGHT OF WAY, PROPERTY LINES, CENTERLINES AND OTHERS ARE FOR GRAPHICAL REPRESENTATION ONLY.



905 Sutter St. Suite 200 Folsom, CA 95630  
 (916) 366-3040 Fax (916) 366-3303  
 R.E.Y. ENGINEERS, Inc.  
 Civil Engineers / Land Surveyors

## CORNER RECORD EXHIBIT MAP

SCALE: 1" = 20'

JOB NO: 35318042

DATE: 8/21/2025

DWG: PALOMA AVE.