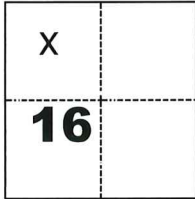


# CORNER RECORD

Agency Index

CR-25-302

Document Number

City of \_\_\_\_\_ County of SAN JOAQUIN, CaliforniaBrief Legal Description LOT 28 OF 11 M&P 19, S.J.C.R.**CORNER TYPE****COORDINATES (Optional)**

- ☐ Government Corner ☐ Control  
☐ Meander ☒ Property  
☐ Rancho ☐ Other

Date of Survey August 10, 2025

N. \_\_\_\_\_ E. \_\_\_\_\_

Elevation \_\_\_\_\_

Units ☐ Metric ☒ U.S. Survey Foot

Horizontal Datum \_\_\_\_\_

Zone \_\_\_\_\_ Epoch Date \_\_\_\_\_

Vertical Datum \_\_\_\_\_

☐ Complies with Public Resources Code §§8801-8819☐ Complies with Public Resources Code §§8890-8902T2N.,R6E.PLS Act Ref.: ☐ 8765(d) ☒ 8771 ☐ 8773 ☐ Other:

Corner/  
Monument: ☒ Left as found ☐ Established ☐ Rebuilt ☒ Pre-Construction  
☐ Found and tagged ☐ Reestablished ☒ Referenced ☐ Post-Construction

Narrative of corner identified and monument as found, set, reset, replaced, or removed:

☒ See sheet #2 for description(s):

FOUND 1" IRON PIPE, NO TAG, ON THE NORTH BOUNDARY LINE OF LOT 28, 11 M&P 019, SAN JOAQUIN COUNTY RECORDS. See Map on page 2 of this corner record.

**SURVEYOR'S STATEMENT**

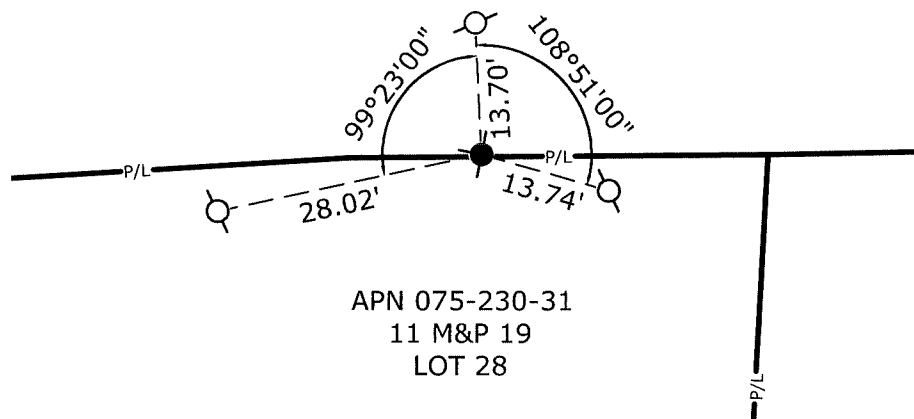
This Corner Record was prepared by me or under my direction in conformance with

the Professional Land Surveyors' Act on August 15, 2025Signed Ronald E. Monsour (P.L.S.) or R.C.E. No. 8474**COUNTY SURVEYOR'S STATEMENT**This Corner Record was received September 15, 2025and examined and filed September 30, 2025Signed James E. Hart P.L.S. or R.C.E. No. 8657Title County Surveyor

County Surveyor's Comment



## EL CAMINO AVENUE



APN 075-230-31  
11 M&P 19  
LOT 28

SCALE: 1" = 20'

**LEGEND:**

- FOUND 1" IRON PIPE, NO TAG  
 SET 5/8" REBAR W/ R.E.Y. CAP

S.J.C.R. SAN JOAQUIN COUNTY RECORDS

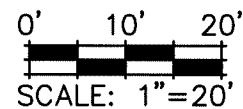
APN ASSESSOR'S PARCEL NUMBER

M&P MAPS & PLATS

**REFERENCE:**

11 M&P 19, S.J.C.R.

NOTE: THE PURPOSE OF THIS CORNER RECORD IS TO PERPETUATE THE POSITION(S) OF EXISTING MONUMENT(S). NO REPRESENTATION IS MADE TO ANY RELATIVE POSITION(S) OF SAID MONUMENT(S). ALL RIGHT OF WAY, PROPERTY LINES, CENTERLINES AND OTHERS ARE FOR GRAPHICAL REPRESENTATION ONLY.



905 Sutter St. Suite 200, Folsom, CA 95630  
(916) 366-3040 Fax (916) 366-3303  
R.E.Y. ENGINEERS, Inc.  
Civil Engineers / Land Surveyors

## CORNER RECORD EXHIBIT MAP

SCALE: 1" = 20'  
JOB NO: 35318042  
DATE: 8/21/2025  
DWG: PALOMA AVE.