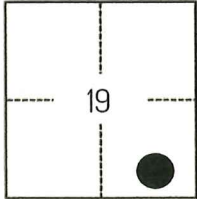


CORNER RECORD

Agency Index

CR-25-294

Document Number

City of STOCKTON County of SAN JOAQUIN, CaliforniaBrief Legal Description FOUND MONUMENT SHOWN ON CHAS H. WIDDOWS MAP AA-358, SAN JOAQUIN COUNTY SURVEYOR'S RECORDS.**CORNER TYPE****COORDINATES (Optional)**

C.M. WEBER GRANT

- ☐ Government Corner ☐ Control
☐ Meander ☒ Property
☐ Rancho ☐ Other

Date of Survey APRIL 15, 2025

N. _____ E. _____

Elevation _____

Units ☐ Metric ☒ U.S. Survey Foot

Horizontal Datum _____

Zone _____ Epoch Date _____

Vertical Datum _____

☐ Complies with Public Resources Code §§8801-8819☐ Complies with Public Resources Code §§8890-8902

PLS Act Ref.:

☐ 8765(d)☒ 8771☐ 8773☐ Other:Corner/
Monument:☒ Left as found☐ Established☐ Rebuilt☒ Pre-Construction☐ Found and tagged☐ Reestablished☒ Referenced☐ Post-Construction

Narrative of corner identified and monument as found, set, reset, replaced, or removed:

☒ See sheet #2 for description(s):

THE FOUND MONUMENT(S) SHOWN ON THIS CORNER RECORD WERE FOUND IN THE APPROXIMATE LOCATION OF THE CORNER(S) ON CHAS H. WIDDOWS MAP AA-358, SAN JOAQUIN COUNTY SURVEYOR'S RECORDS. I DID NOT VERIFY THE IDENTITY AND VALIDITY OF THE MONUMENT FOUND AS ACTUALLY MARKING THE PROPERTY CORNER.

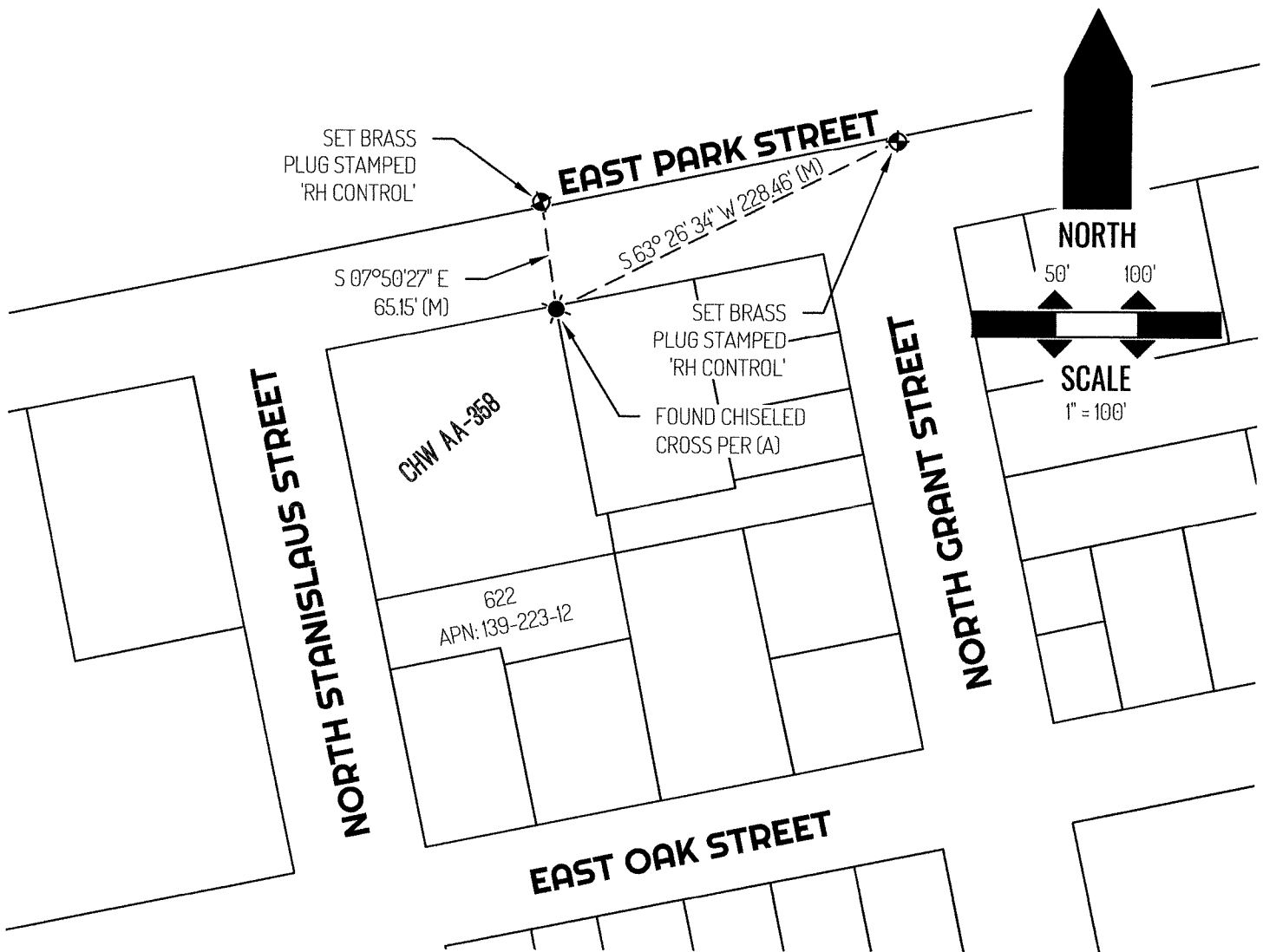
SURVEYOR'S STATEMENT

This Corner Record was prepared by me or under my direction in conformance with

the Professional Land Surveyors' Act on APRIL 17, 2025Signed [Signature] P.L.S. or R.C.E. No. 8489**COUNTY SURVEYOR'S STATEMENT**This Corner Record was received September 26, 2025and examined and filed September 30, 2025Signed [Signature] P.L.S. or R.C.E. No. 8657Title County Surveyor

County Surveyor's Comment



**LEGEND**

720

RS

S.J.C.R.

APN

(M)

FOUND MONUMENT AS NOTED

SET CONTROL POINT

REFERENCE STREET ADDRESS

RECORD OF SURVEY, SAN JOAQUIN COUNTY RECORDS

SAN JOAQUIN COUNTY RECORDS

TAX ASSESSOR PARCEL NUMBER

MEASURED

TIE LINE

LOT LINE

SURVEYOR NOTE

THIS CORNER RECORD IS BEING FILED TO FULFILL THE PRE-CONSTRUCTION MONUMENT PRESERVATION REQUIREMENTS OF SECTION 8771 OF THE CALIFORNIA BUSINESS AND PROFESSIONS CODE. IT IS NOT THE RESULT OF A FULLY RESOLVED BOUNDARY SURVEY FOR ANY PARCEL OF REAL PROPERTY.

REFERENCE(S)

(A) CHAS H. WIDDOWS MAP, AA-358, SAN JOAQUIN COUNTY SURVEYOR'S RECORDS