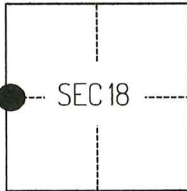


# CORNER RECORD

Agency Index

CR-25-291

Document Number

City of \_\_\_\_\_ County of SAN JOAQUIN, CaliforniaBrief Legal Description FOUND MONUMENT AS SHOWN ON CR-24-365, SAN JOAQUIN COUNTY SURVEYOR'S RECORDS.**CORNER TYPE****COORDINATES (Optional)**

T2S/R9E

- ☐ Government Corner ☐ Control  
☐ Meander ☒ Property  
☐ Rancho ☐ Other

Date of Survey February 21, 2024

N. \_\_\_\_\_ E. \_\_\_\_\_

Elevation \_\_\_\_\_

Units

☐ Metric☒ U.S. Survey Foot

Horizontal Datum \_\_\_\_\_

Zone \_\_\_\_\_

Epoch Date \_\_\_\_\_

Vertical Datum \_\_\_\_\_

☐ Complies with Public Resources Code §§8801-8819☐ Complies with Public Resources Code §§8890-8902

PLS Act Ref.:

☐ 8765(d)☒ 8771☐ 8773☐ Other:Corner/  
Monument:☒ Left as found☐ Established☐ Rebuilt☐ Pre-Construction☐ Found and tagged☐ Reestablished☒ Referenced☒ Post-Construction

Narrative of corner identified and monument as found, set, reset, replaced, or removed:

☒ See sheet #2 for description(s):

THE FOUND MONUMENT(S) SHOWN ON THIS CORNER RECORD WERE FOUND AT THE LOCATION OF THE CORNER(S) ON CR- 24-365, SAN JOAQUIN COUNTY SURVEYOR'S RECORDS. I DID NOT VERIFY THE IDENTITY AND VALIDITY OF THE MONUMENT FOUND AS ACTUALLY MARKING THE PROPERTY CORNER.

**SURVEYOR'S STATEMENT**

This Corner Record was prepared by me or under my direction in conformance with

the Professional Land Surveyors' Act on March 29, 2024

Signed

P.L.S. or R.C.E. No.

8489**COUNTY SURVEYOR'S STATEMENT**

This Corner Record was received

September 12, 2025

and examined and filed

September 16, 2025

Signed

P.L.S. or R.C.E. No.

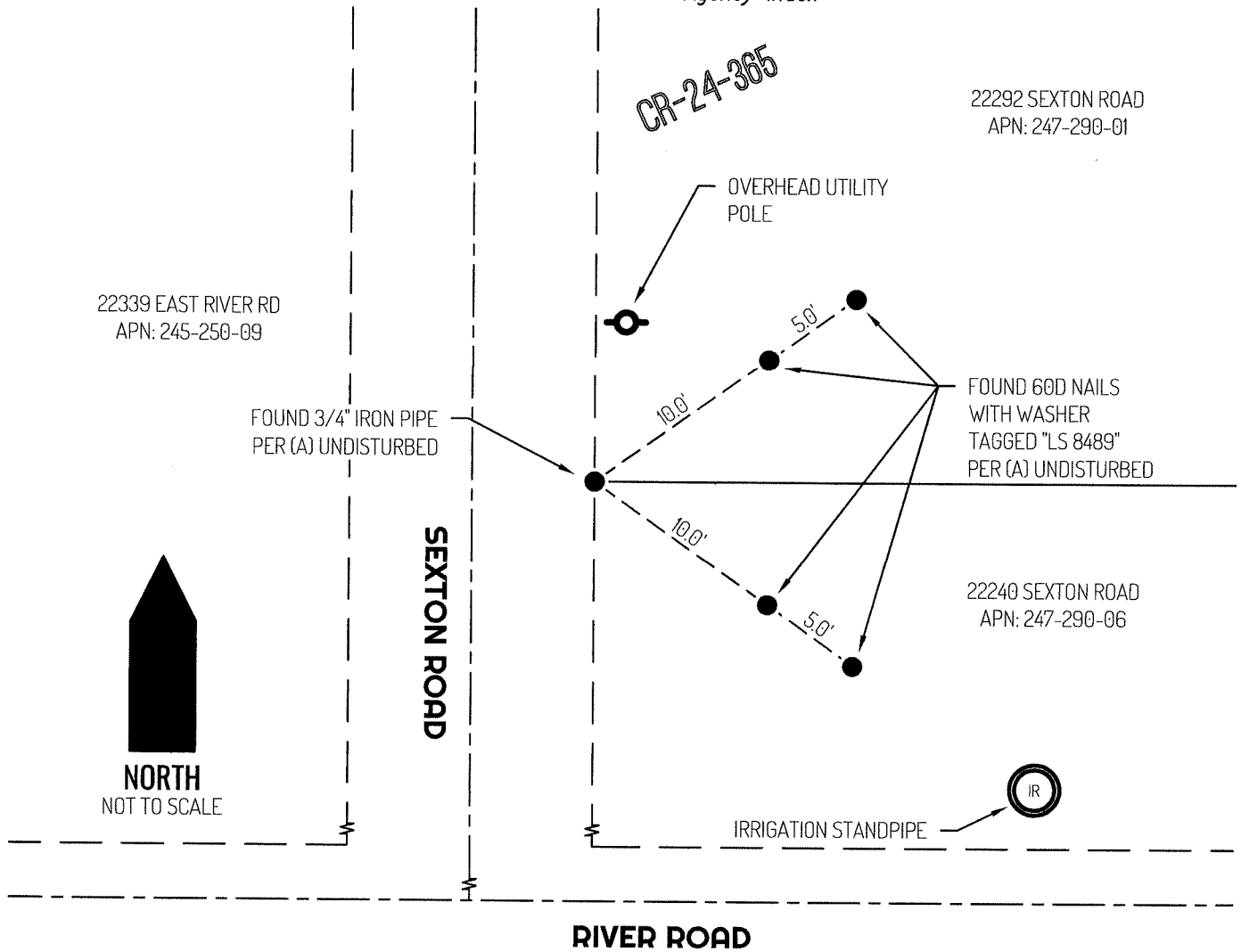
8657

Title

County Surveyor

County Surveyor's Comment





## LEGEND

●	FOUND MONUMENT AS NOTED
22092	REFERENCE STREET ADDRESS
S.J.C.S.R.	SAN JOAQUIN COUNTY SURVEYOR'S RECORDS
APN	TAX ASSESSOR PARCEL NUMBER
CR	CORNER RECORD, S.J.C.S.R.
---	TIE LINE
---	LOT LINE
---	RIGHT-OF-WAY SIDELINE
---	RIGHT-OF-WAY CENTERLINE

## REFERENCE

(A) CR-24-365, SAN JOAQUIN COUNTY SURVEYOR'S RECORDS