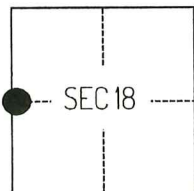


CORNER RECORD

Agency Index

CR-25-289

Document Number

City of _____ County of SAN JOAQUIN, CaliforniaBrief Legal Description FOUND MONUMENTS AS SHOWN ON CR-24-363, SAN JOAQUIN COUNTY SURVEYOR'S RECORDS.**CORNER TYPE****COORDINATES (Optional)**

T2S/R9E

- ☐ Government Corner ☐ Control
☐ Meander ☒ Property
☐ Rancho ☐ Other

Date of Survey February 21, 2024

N. _____ E. _____

Elevation _____

Units ☐ Metric ☒ U.S. Survey Foot

Horizontal Datum _____

Zone _____ Epoch Date _____

Vertical Datum _____

☐ Complies with Public Resources Code §§8801-8819☐ Complies with Public Resources Code §§8890-8902

PLS Act Ref.:

☐ 8765(d)☒ 8771☐ 8773☐ Other:Corner/
Monument:☒ Left as found☐ Established☐ Rebuilt☐ Pre-Construction☐ Found and tagged☐ Reestablished☒ Referenced☒ Post-Construction

Narrative of corner identified and monument as found, set, reset, replaced, or removed:

☒ See sheet #2 for description(s):

THE FOUND MONUMENT(S) SHOWN ON THIS CORNER RECORD WERE FOUND AT THE LOCATION OF THE CORNER(S) ON CR- 24-363, SAN JOAQUIN COUNTY SURVEYOR'S RECORDS. I DID NOT VERIFY THE IDENTITY AND VALIDITY OF THE MONUMENT FOUND AS ACTUALLY MARKING THE PROPERTY CORNER.

SURVEYOR'S STATEMENT

This Corner Record was prepared by me or under my direction in conformance with

the Professional Land Surveyors' Act on March 29, 2024

Signed

Scott L. Blake

P.L.S. or R.C.E. No.

8489**COUNTY SURVEYOR'S STATEMENT**

This Corner Record was received

September 12, 2025

and examined and filed

September 16, 2025

Signed

James E. Hart

P.L.S. or R.C.E. No.

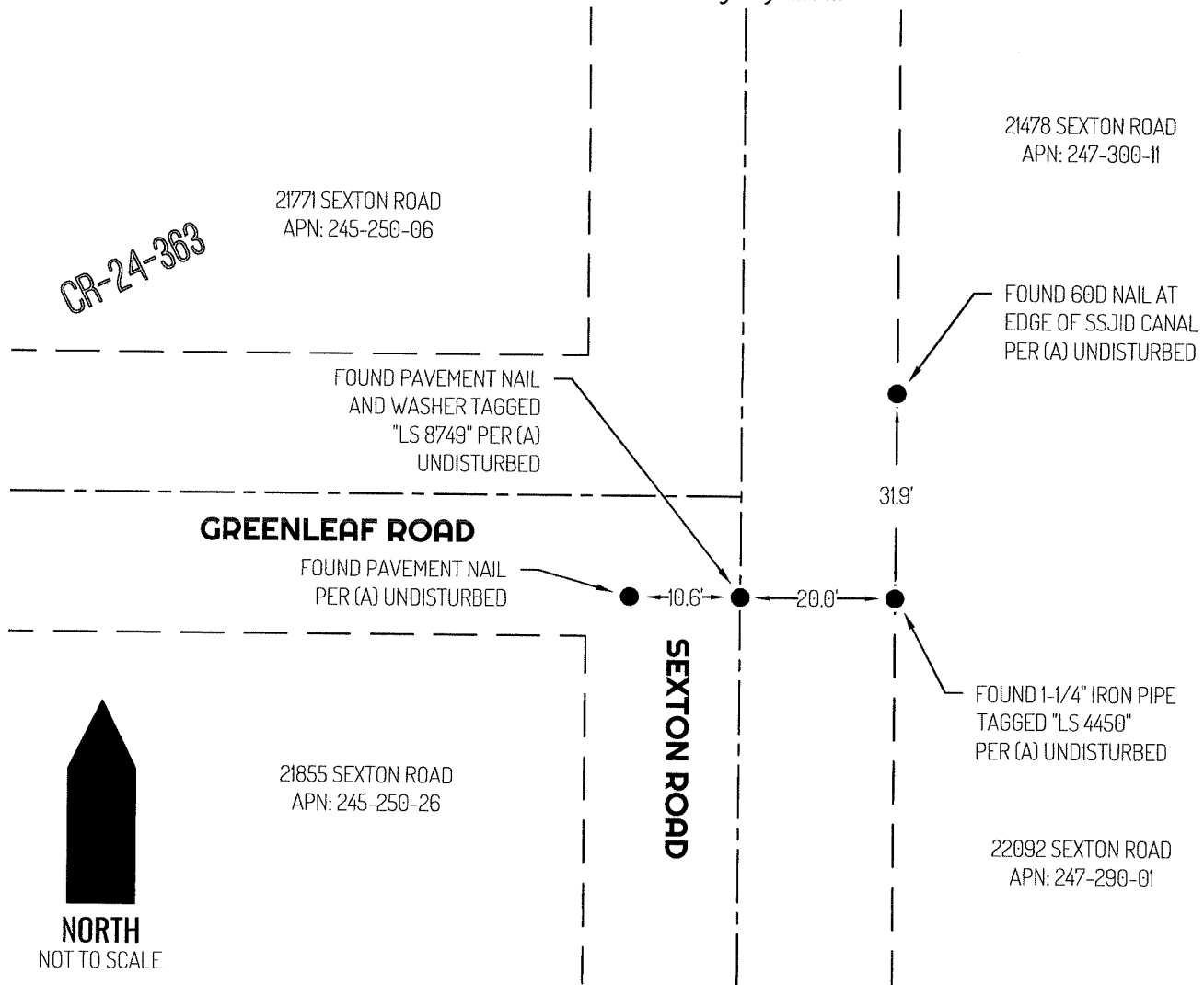
8657

Title

County Surveyor

County Surveyor's Comment





LEGEND

●	FOUND MONUMENT AS NOTED
22092	REFERENCE STREET ADDRESS
S.J.C.S.R.	SAN JOAQUIN COUNTY SURVEYOR'S RECORDS
APN	TAX ASSESSOR PARCEL NUMBER
CR	CORNER RECORD, S.J.C.S.R.
---	RIGHT-OF-WAY SIDELINE
- - -	RIGHT-OF-WAY CENTERLINE

REFERENCE

(A) CR-24-363, SAN JOAQUIN COUNTY SURVEYOR'S RECORDS