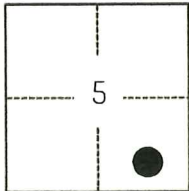


CORNER RECORD

Agency Index

CR-25-288

Document Number

City of _____ County of SAN JOAQUIN, CaliforniaBrief Legal Description FOUND MONUMENT ALONG THE NORTHERLY RIGHT-OF-WAY LINE OF PASADENA AVENUE PER CORNER RECORD 24-156, SAN JOAQUIN COUNTY SURVEYOR'S RECORDS.**CORNER TYPE****COORDINATES (Optional)**

T2S/R4E

- ☐ Government Corner ☐ Control
☐ Meander ☒ Property
☐ Rancho ☐ Other

Date of Survey May 6, 2025

N. _____ E. _____

Elevation _____

Units ☐ Metric ☒ U.S. Survey Foot

Horizontal Datum _____

Zone _____ Epoch Date _____

Vertical Datum _____

☐ Complies with Public Resources Code §§8801-8819☐ Complies with Public Resources Code §§8890-8902

PLS Act Ref.:

☐ 8765(d)☒ 8771☐ 8773☐ Other:Corner/
Monument:☒ Left as found☐ Established☐ Rebuilt☐ Pre-Construction☐ Found and tagged☐ Reestablished☒ Referenced☒ Post-Construction

Narrative of corner identified and monument as found, set, reset, replaced, or removed:

☒ See sheet #2 for description(s):

THE FOUND MONUMENT(S) SHOWN ON THIS CORNER RECORD WERE FOUND IN THE RECORD LOCATION OF THE CORNER(S) ON CORNER RECORD 24-156, SAN JOAQUIN COUNTY SURVEYOR'S RECORDS. I DID NOT VERIFY THE IDENTITY OR VALIDITY OF THE MONUMENT FOUND AS ACTUALLY MARKING THE PROPERTY CORNER.

SURVEYOR'S STATEMENT

This Corner Record was prepared by me or under my direction in conformance with

the Professional Land Surveyors' Act on June 11, 2025

Signed

P.L.S. or R.C.E. No.

8489**COUNTY SURVEYOR'S STATEMENT**

This Corner Record was received

September 12, 2025

and examined and filed

September 16, 2025

Signed

P.L.S. or R.C.E. No.

8657

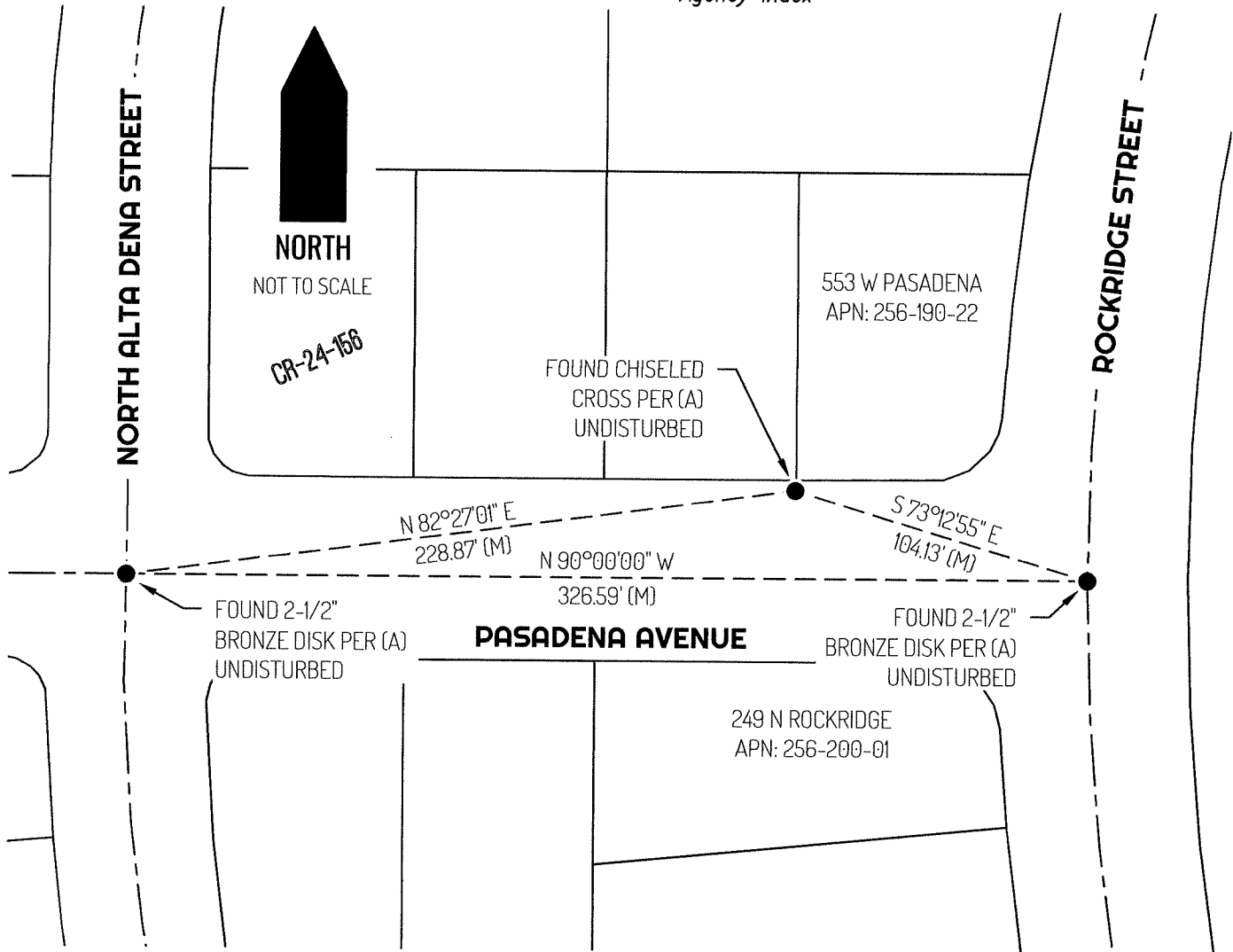
Title

County Surveyor

County Surveyor's Comment



Agency Index



LEGEND

- | | |
|-----------|--|
| ● | FOUND MONUMENT AS NOTED UNDISTURBED |
| 249 | REFERENCE STREET ADDRESS |
| APN | TAX ASSESSOR PARCEL NUMBER |
| CR | CORNER RECORD, SAN JOAQUIN COUNTY SURVEYOR'S RECORDS |
| (M) | MEASURED |
| --- | TIE LINE |
| ===== | LOT LINE |
| - - - - - | CENTERLINE |

REFERENCE

- (A) CORNER RECORD 24-156, SAN JOAQUIN COUNTY SURVEYOR'S RECORDS