

CORNER RECORD

Agency Index

CR-25-284

Document Number

City of _____ County of SAN JOAQUIN, CaliforniaBrief Legal Description FOUND MONUMENTS ALONG THE EAST SIDE OF EL DORADO STREET AND THE NORTH SIDE OF MATTHEWS ROAD.**CORNER TYPE****COORDINATES (Optional)**

C.M. WEBER GRANT

- ☐ Government Corner ☐ Control
☐ Meander ☒ Property
☐ Rancho ☐ Other

Date of Survey JULY 10, 2025

N. _____ E. _____

Elevation _____

Units ☐ Metric ☒ U.S. Survey Foot

Horizontal Datum _____

Zone _____ Epoch Date _____

Vertical Datum _____

☐ Complies with Public Resources Code §§8801-8819☐ Complies with Public Resources Code §§8890-8902

PLS Act Ref.:

☐ 8765(d)☒ 8771☐ 8773☐ Other:Corner/
Monument:☒ Left as found☐ Established☐ Rebuilt☒ Pre-Construction☐ Found and tagged☐ Reestablished☒ Referenced☐ Post-Construction

Narrative of corner identified and monument as found, set, reset, replaced, or removed:

☒ See sheet #2 for description(s):

THE FOUND MONUMENT(S) SHOWN ON THIS CORNER RECORD WERE FOUND IN THE APPROXIMATE LOCATION OF THE CORNER(S) ON RS 32-24, SAN JOAQUIN COUNTY RECORDS, OR NOT OF RECORD. I DID NOT VERIFY THE IDENTITY AND VALIDITY OF THE MONUMENTS FOUND AS ACTUALLY MARKING THE PROPERTY CORNER.

SURVEYOR'S STATEMENT

This Corner Record was prepared by me or under my direction in conformance with

the Professional Land Surveyors' Act on JULY 21, 2025

Signed

P.L.S. or R.C.E. No.

8489

**COUNTY SURVEYOR'S STATEMENT**

This Corner Record was received

September 12, 2025

and examined and filed

September 16, 2025

Signed

P.L.S. or R.C.E. No.

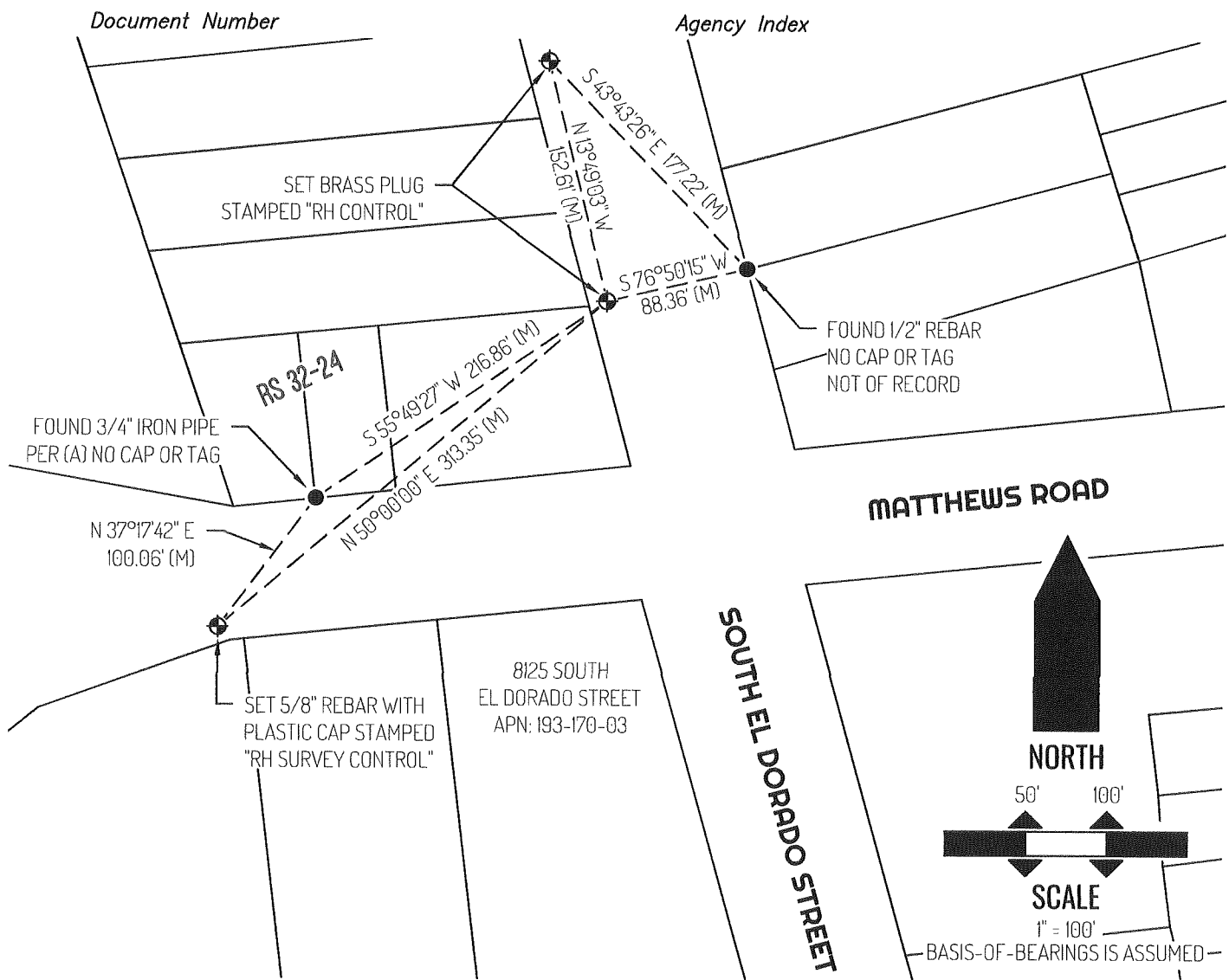
8657

Title

County Surveyor

County Surveyor's Comment





LEGEND

●	FOUND MONUMENT AS NOTED
⊕	SET CONTROL POINT AS NOTED
8125	REFERENCE STREET ADDRESS
RS	RECORD OF SURVEY, SAN JOAQUIN COUNTY RECORDS
APN	TAX ASSESSOR PARCEL NUMBER
(M)	MEASURED
---	TIE LINE
---	LOT LINE

SURVEYOR NOTE

THIS CORNER RECORD IS BEING FILED TO FULFILL THE PRE-CONSTRUCTION MONUMENT PRESERVATION REQUIREMENTS OF SECTION 8771 OF THE CALIFORNIA BUSINESS AND PROFESSIONS CODE. IT IS NOT THE RESULT OF A FULLY RESOLVED BOUNDARY SURVEY FOR ANY PARCEL OF REAL PROPERTY.

REFERENCE

(A) RECORD OF SURVEY BOOK 32, AT PAGE 24, SAN JOAQUIN COUNTY RECORDS