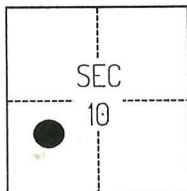


CORNER RECORD

Agency Index

CR-25-283

Document Number

City of STOCKTON County of SAN JOAQUIN, CaliforniaBrief Legal Description FOUND CHISELED CROSS BETWEEN LOTS 12 AND 13, PER CORNER RECORD 25-157, SAN JOAQUIN COUNTY SURVEYOR'S RECORDS.**CORNER TYPE****COORDINATES (Optional)**

CM WEBER GRANT

- ☐ Government Corner ☐ Control
☐ Meander ☒ Property
☐ Rancho ☐ Other

Date of Survey June 5, 2025

N. _____ E. _____

Elevation _____

Units ☐ Metric ☒ U.S. Survey Foot

Horizontal Datum _____

Zone _____ Epoch Date _____

Vertical Datum _____

☐ Complies with Public Resources Code §§8801-8819☐ Complies with Public Resources Code §§8890-8902

PLS Act Ref.:

☐ 8765(d)☒ 8771☐ 8773☐ Other:Corner/
Monument:☒ Left as found☐ Established☐ Rebuilt☐ Pre-Construction☐ Found and tagged☐ Reestablished☒ Referenced☒ Post-Construction

Narrative of corner identified and monument as found, set, reset, replaced, or removed:

☒ See sheet #2 for description(s):

THE FOUND MONUMENT(S) SHOWN ON THIS CORNER RECORD WERE FOUND AT THE RECORD LOCATION OF THE CORNER(S) ON CORNER RECORD 25-157, SAN JOAQUIN COUNTY SURVEYOR'S RECORDS. I DID NOT VERIFY THE IDENTITY OR VALIDITY OF THE MONUMENTS FOUND AS ACTUALLY MARKING THE PROPERTY CORNER.

SURVEYOR'S STATEMENT

This Corner Record was prepared by me or under my direction in conformance with

the Professional Land Surveyors' Act on July 12, 2025Signed Scott L. Blake P.L.S. or R.C.E. No. 8489**COUNTY SURVEYOR'S STATEMENT**

This Corner Record was received

September 12, 2025

and examined and filed

September 16, 2025

Signed

James E. Hart

P.L.S. or R.C.E. No.

8657

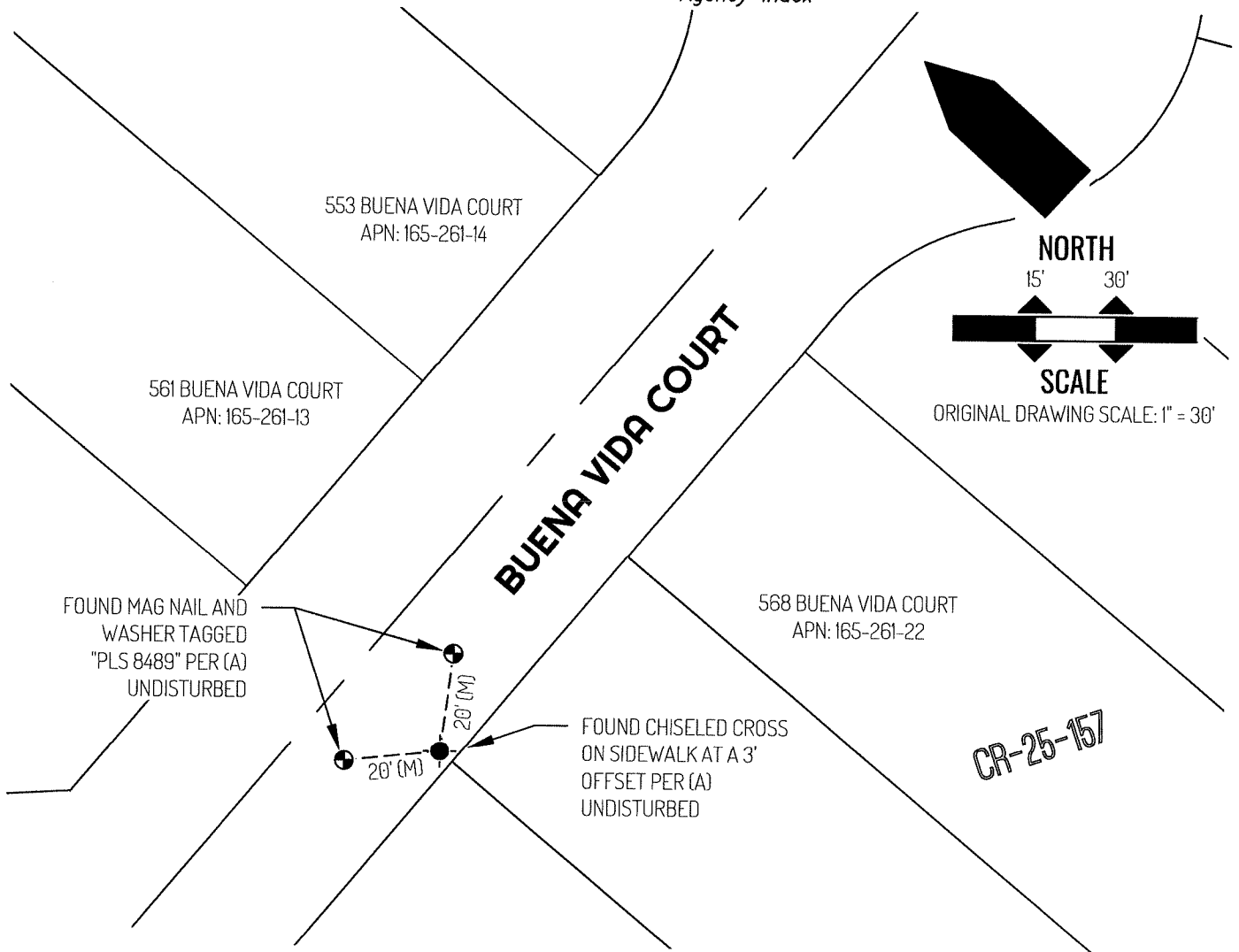
Title

County Surveyor

County Surveyor's Comment

Document Number

Agency Index



LEGEND

	FOUND CHISELED CROSS AS NOTED
	FOUND CONTROL AS NOTED
553	REFERENCE STREET ADDRESS
CR	CORNER RECORD, SAN JOAQUIN COUNTY SURVEYOR'S RECORDS
APN	TAX ASSESSOR PARCEL NUMBER
(M)	MEASURED
---	TIE LINE
---	LOT LINE
---	RIGHT-OF-WAY CENTERLINE

REFERENCE

(A) CORNER RECORD 25-157, SAN JOAQUIN COUNTY SURVEYOR'S RECORDS