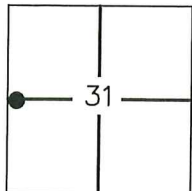


# CORNER RECORD

Agency Index

CR-25-279

Document Number

City of MANTECACounty of SAN JOAQUIN, CaliforniaBrief Legal Description SE CORNER OF AIRPORT WAY & CROM ST., SECTION 31, T1S, R7E, M.D.B.M.

T.1S., R.7E

## CORNER TYPE

- ☐ Government Corner ☒ Control  
☐ Meander ☐ Property  
☐ Rancho ☐ Other

Date of Survey AUGUST 15, 2025

## COORDINATES (Optional )

N. \_\_\_\_\_ E. \_\_\_\_\_

Elevation 24.784'Units ☐ Metric ☒ U.S. Survey Foot

Horizontal Datum \_\_\_\_\_

Zone \_\_\_\_\_ Epoch Date \_\_\_\_\_

Vertical Datum NAVD 88☐ Complies with Public Resources Code §§8801-8819☐ Complies with Public Resources Code §§8890-8902PLS Act Ref: ☐ 8765(d) ☒ 8771 ☐ 8773 ☐ Other:

Corner/  
Monument: ☐ Left as found ☒ Established ☐ Rebuilt ☐ Pre-Construction  
☐ Found and tagged ☐ Reestablished ☐ Referenced ☒ Post-Construction

Narrative of corner identified and monument as found, set, reset, replaced, or removed:

☒ See sheet #2 for description (s):SET MONUMENT AS SHOWN ON SHEET 2.

## SURVEYOR'S STATEMENT

This Corner Record was prepared by me or under my direction in conformance with  
the Professional Land Surveyors' Act on AUGUST 15, 2025

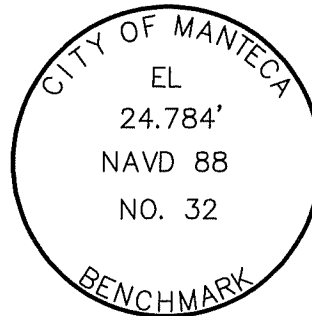
Signed [Signature] P.L.S. or R.C.E. No. 6953

## COUNTY SURVEYOR'S STATEMENT

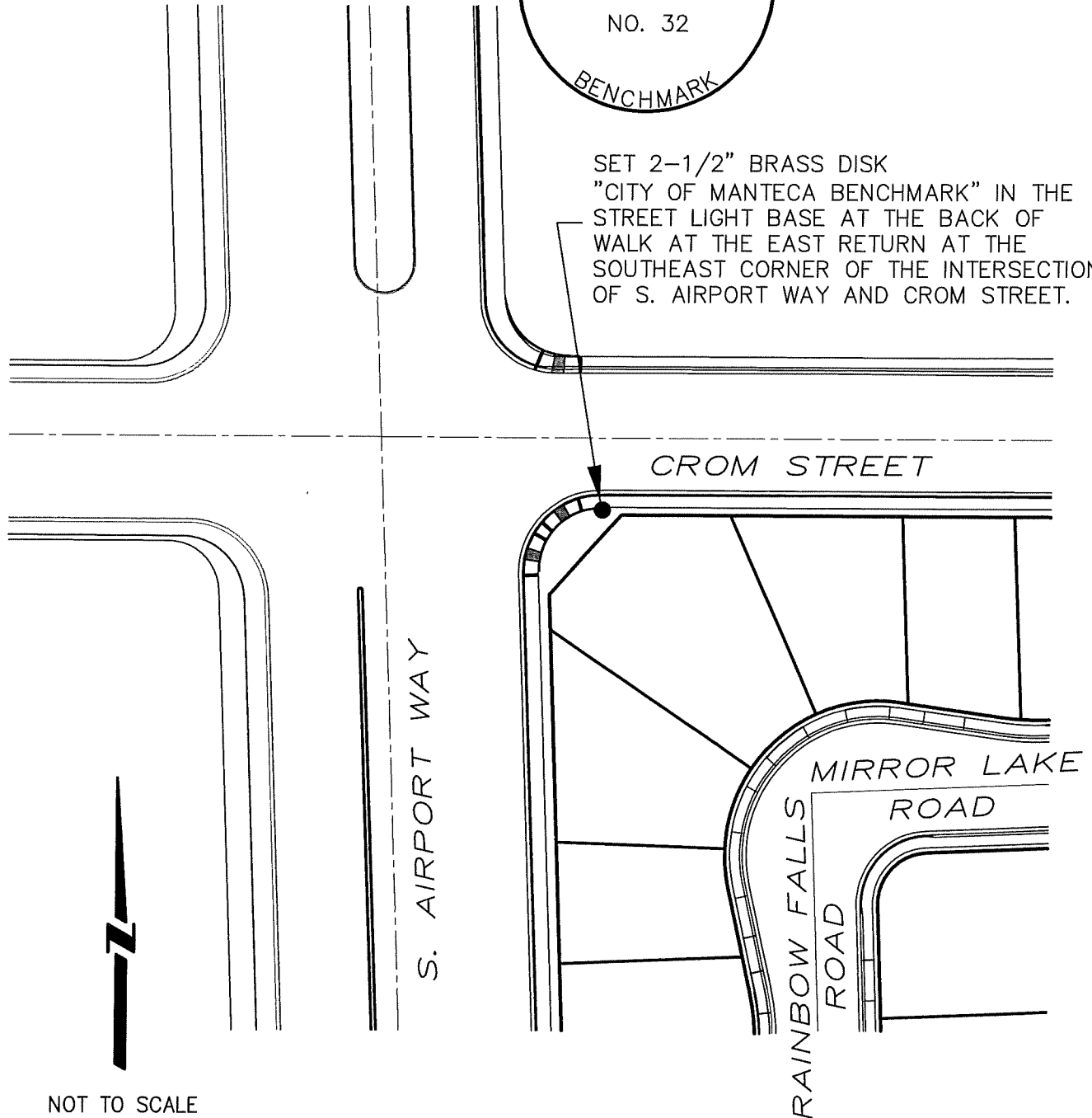
This Corner Record was received August 22, 2025and examined and filed August 29, 2025Signed James E. Hart P.L.S. or R.C.E. No. 8657Title County Surveyor

County Surveyor's Comment \_\_\_\_\_

ELEVATION WAS ESTABLISHED FROM A CLOSED DIFFERENTIAL LEVEL LOOP HOLDING THE CITY OF MANTECA BENCHMARK AT THE NORTHEAST CORNER OF THE INTERSECTION OF AIRPORT WAY AND W. YOSEMITE AVENUE AS SHOWN ON CORNER RECORD 25-061 ON FILE IN THE SAN JOAQUIN COUNTY SURVEYOR'S OFFICE, HAVING AN ELEVATION OF 28.839' BASED ON NAVD88 DATUM.



SET 2-1/2" BRASS DISK  
"CITY OF MANTECA BENCHMARK" IN THE  
STREET LIGHT BASE AT THE BACK OF  
WALK AT THE EAST RETURN AT THE  
SOUTHEAST CORNER OF THE INTERSECTION  
OF S. AIRPORT WAY AND CROM STREET.



NOT TO SCALE