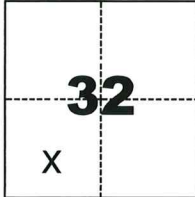


CORNER RECORD

Agency Index

CR-25-278

Document Number

City of UNINCORPORATED County of SAN JOAQUIN, CaliforniaBrief Legal Description LOT 1 BLOCK 9, 16 M&P 30 & LOT 18, 17 M& P 27, S.J.C.R.**CORNER TYPE****COORDINATES (Optional)**

- | | |
|--|--|
| <input type="checkbox"/> Government Corner | <input type="checkbox"/> Control |
| <input type="checkbox"/> Meander | <input checked="" type="checkbox"/> Property |
| <input type="checkbox"/> Rancho | <input type="checkbox"/> Other |

Date of Survey July 18, 2025

N. _____ E. _____

Elevation _____

Units ☐ Metric ☒ U.S. Survey Foot

Horizontal Datum _____

Zone _____ Epoch Date _____

Vertical Datum _____

☐ Complies with Public Resources Code §§8801-8819☐ Complies with Public Resources Code §§8890-8902T2N., R6E.

PLS Act Ref.:

☐ 8765(d)☒ 8771☐ 8773☐ Other:Corner/
Monument:☒ Left as found☐ Established☐ Rebuilt☒ Pre-Construction☐ Found and tagged☐ Reestablished☒ Referenced☐ Post-Construction

Narrative of corner identified and monument as found, set, reset, replaced, or removed:

☒ See sheet #2 for description(s):

FOUND 3/4" REBAR WITH NO CAP AT THE NORTHEAST CORNER OF LOT 1, BLOCK 9,
16 M&P 30, SAN JOAQUIN COUNTY RECORDS.

SURVEYOR'S STATEMENT

This Corner Record was prepared by me or under my direction in conformance with

the Professional Land Surveyors' Act on July 23, 2025Signed  (P.L.S.) or R.C.E. No. 8474**COUNTY SURVEYOR'S STATEMENT**

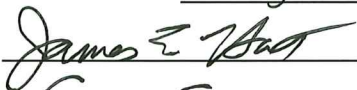
This Corner Record was received

August 25, 2025

and examined and filed

August 29, 2025

Signed



P.L.S. or R.C.E. No.

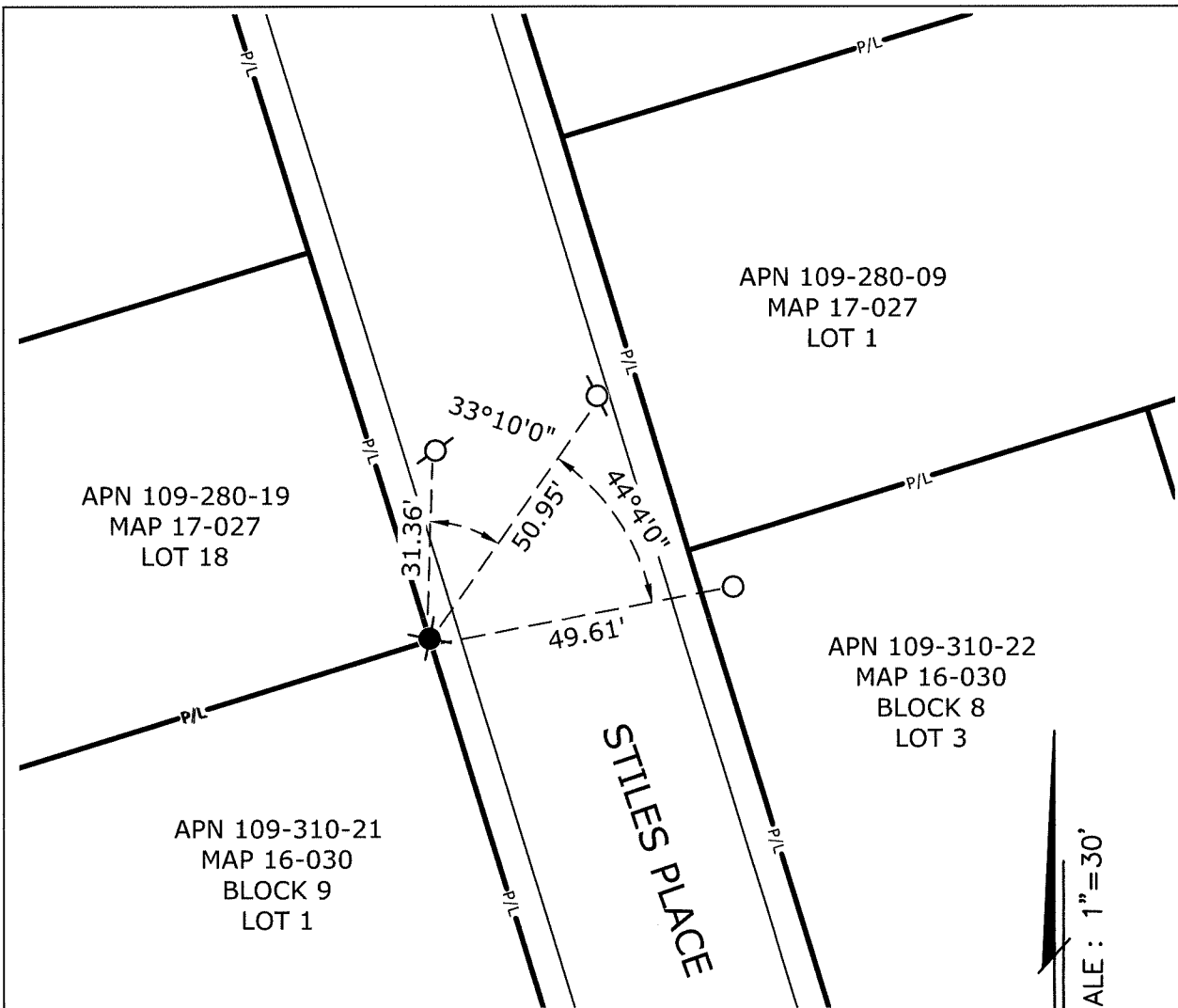
8657

Title

County Surveyor

County Surveyor's Comment



**LEGEND:**

- ✕ FOUND 3/4" REBAR W/ NO CAP
- SET 5/8" REBAR W/ R.E.Y. CAP
- ⊙ SET MAG W/ REY CONTROL WASHER

0' 15' 30'

SCALE: 1"=30'

S.J.C.R. SAN JOAQUIN COUNTY RECORDS

APN ASSESSOR'S PARCEL NUMBER

REFERENCES:

16 MAPS&PLATS 30, S.J.C.R.

17 MAPS&PLATS 27, S.J.C.R.

NOTE: THE PURPOSE OF THIS CORNER RECORD IS TO PERPETUATE THE POSITION(S) OF EXISTING MONUMENT(S). NO REPRESENTATION IS MADE TO ANY RELATIVE POSITION(S) OF SAID MONUMENT(S). ALL RIGHT OF WAY, PROPERTY LINES, CENTERLINES AND OTHERS ARE FOR GRAPHICAL REPRESENTATION ONLY.



905 Sutter St., Suite 200, Folsom, CA 95630
(916) 366-3040 Fax (916) 366-3303
R. E. Y. ENGINEERS, Inc.
Civil Engineers / Land Surveyors

CORNER RECORD EXHIBIT MAP

SCALE: 1" = 30'
JOB NO: 35185074
DATE: 7/23/2025
DWG: STILES PLC 3815