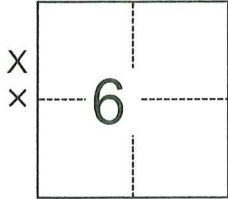


CORNER RECORD

Agency Index

CR-25-273

Document Number

City of _____ County of SAN JOAQUIN, CaliforniaBrief Legal Description Lammers Road, approximately 2472 feet south of Valpico Road**CORNER TYPE****COORDINATES (Optional)**

- ☒ Government Corner ☐ Control
☐ Meander ☐ Property
☐ Rancho ☐ Other

Date of Survey July 3, 2025

N. _____ E. _____

Elevation _____

Units ☐ Metric ☒ U.S. Survey Foot

Horizontal Datum _____

Zone _____ Epoch Date _____

Vertical Datum _____

☐ Complies with Public Resources Code §§8801-8819☐ Complies with Public Resources Code §§8890-8902

T3S, R5E

PLS Act Ref.: ☒ 8765(d) ☐ 8771 ☐ 8773 ☐ Other:

Corner/
Monument: ☒ Left as found ☐ Established ☐ Rebuilt ☒ Pre-Construction
☐ Found and tagged ☐ Reestablished ☐ Referenced ☐ Post-Construction

Narrative of corner identified and monument as found, set, reset, replaced, or removed:

☒ See sheet #2 for description(s):

PRE-CONSTRUCTION DOCUMENTATION OF TWO FOUND MONUMENTS APPROXIMATELY 2472 FEET SOUTH OF THE INTERSECTION OF LAMMERS ROAD AND VALPICO ROAD. SEE ATTACHED SKETCH.

SURVEYOR'S STATEMENT

This Corner Record was prepared by me or under my direction in conformance with

the Professional Land Surveyors' Act on August 12, 2025Signed S. Kyle Pack P.L.S. or R.C.E. No. 8164**COUNTY SURVEYOR'S STATEMENT**

This Corner Record was received

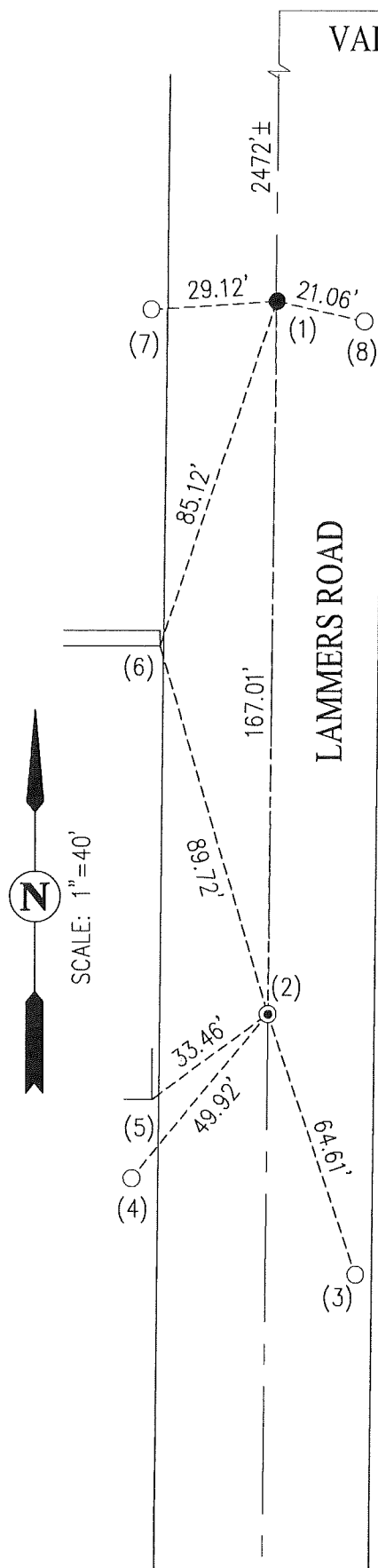
August 14, 2025

and examined and filed

August 19, 2025Signed James E. Hart P.L.S. or R.C.E. No. 8657Title County Surveyor

County Surveyor's Comment





LEGEND

- FOUND MONUMENT, AS NOTED
- REBAR REFERENCE MARKER
- CENTER LINE
- - - TIE LINE
- CR CORNER RECORD, SAN JOAQUIN COUNTY SURVEYOR'S RECORDS

DESCRIPTIONS

- (1) FOUND MAG NAIL AND BRASS TAG STAMPED "SJCO" (CR 13-205)
- (2) FOUND 3/4" IRON PIPE WITH YELLOW CAP STAMPED "SJCO PUB WORKS" IN MONUMENT WELL AT 1/4 SECTION CORNER (CR 13-204)
- (3) SET 5/8" REBAR WITH CBG CONTROL CAP 1 FOOT WEST OF NORTH OF POWER POLE
- (4) SET 5/8" REBAR WITH CBG CONTROL CAP 1 FOOT EAST OF POWER POLE
- (5) TIP OF PAINT ARROW, SE CORNER OF CONCRETE DRIVEWAY
- (6) TIP OF PAINT ARROW ON SW CORNER OF CONCRETE FENCE FOOTING
- (7) SET 5/8" REBAR WITH CBG CONTROL CAP SW OF IRRIGATION WATER VALVE PIPE
- (8) SET 5/8" REBAR WITH CBG CONTROL CAP WEST OF POWER POLE

NOTE

THE INTENT IS TO ESTABLISH REFERENCE TIES TO FOUND MONUMENTS, NOT TO SPECIFY HOW THOSE MONUMENTS RELATE TO PROPERTY LINES. MAP REFERENCES ARE GEOGRAPHIC REFERENCES ONLY.