

# CORNER RECORD

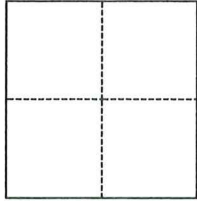
Agency Index

CR-25-272

Document Number

City of TRACY County of SAN JOAQUIN, CaliforniaBrief Legal Description Lammers Road and Ellis Town Drive

## CORNER TYPE



- ☐ Government Corner ☐ Control  
☐ Meander ☐ Property  
☐ Rancho ☒ Other

Date of Survey July 3, 2025

## COORDINATES (Optional)

N. \_\_\_\_\_ E. \_\_\_\_\_

Elevation \_\_\_\_\_

Units ☐ Metric ☒ U.S. Survey Foot

Horizontal Datum \_\_\_\_\_

Zone \_\_\_\_\_ Epoch Date \_\_\_\_\_

Vertical Datum \_\_\_\_\_

☐ Complies with Public Resources Code §§8801-8819☐ Complies with Public Resources Code §§8890-8902PLS Act Ref.: ☒ 8765(d) ☐ 8771 ☐ 8773 ☐ Other:

Corner/  
Monument: ☒ Left as found ☐ Established ☐ Rebuilt ☒ Pre-Construction  
☐ Found and tagged ☐ Reestablished ☐ Referenced ☐ Post-Construction

Narrative of corner identified and monument as found, set, reset, replaced, or removed:

☒ See sheet #2 for description(s):

PRE-CONSTRUCTION DOCUMENTATION OF THREE FOUND MONUMENTS NEAR THE  
INTERSECTION OF LAMMERS ROAD AND ELLIS TOWN DRIVE. SEE ATTACHED SKETCH.

## SURVEYOR'S STATEMENT

This Corner Record was prepared by me or under my direction in conformance with

the Professional Land Surveyors' Act on August 12, 2025Signed *S. Kyle Packer* P.L.S. or R.C.E. No. 8164

## COUNTY SURVEYOR'S STATEMENT

This Corner Record was received

August 14, 2025

and examined and filed

August 19, 2025Signed *James E Hart* P.L.S. or R.C.E. No. 8657Title County Surveyor

County Surveyor's Comment

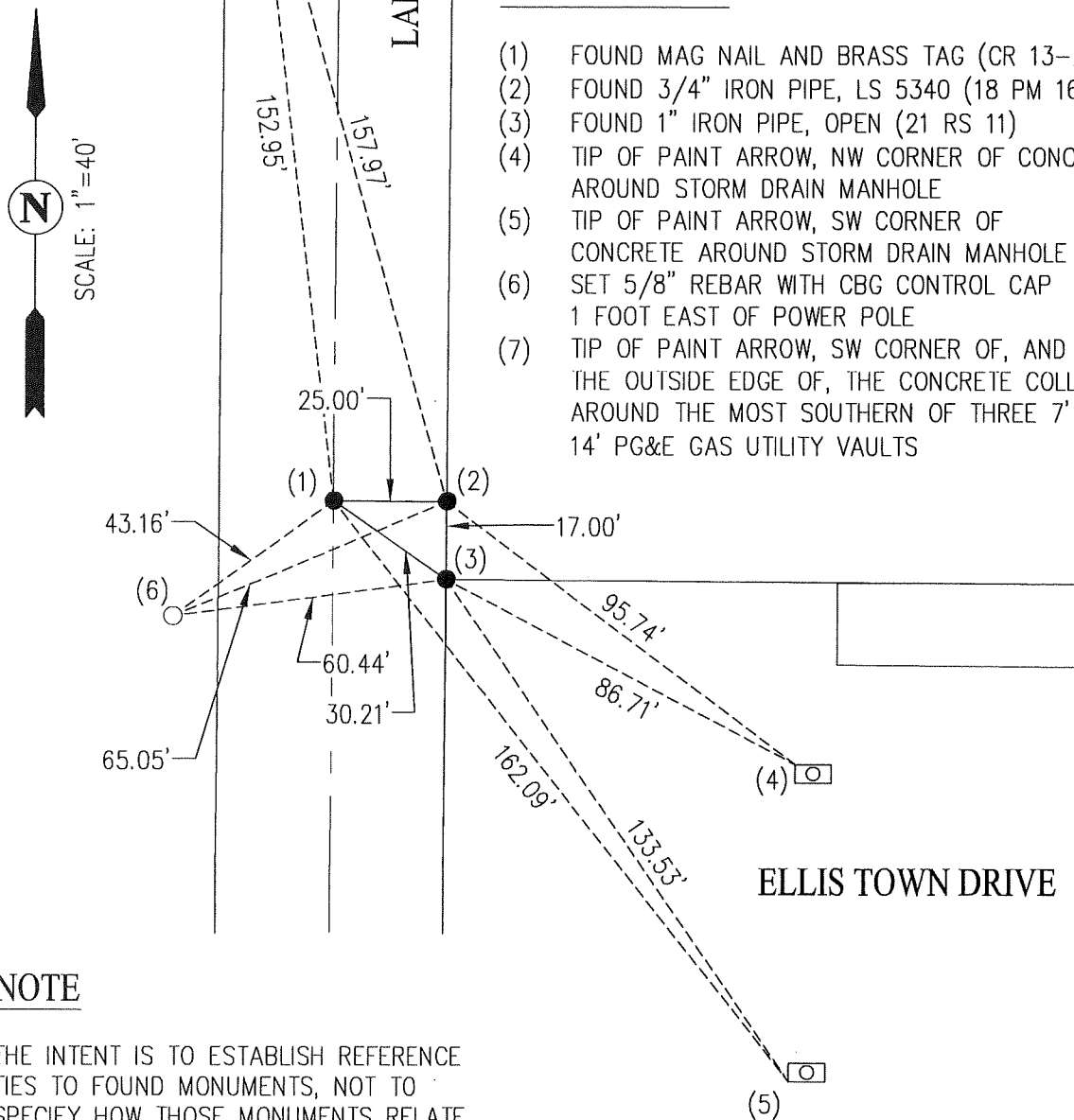


LEGEND

- FOUND MONUMENT, AS NOTED
- REBAR REFERENCE MARKER
- — — — — CENTER LINE
- - - - - TIE LINE
- PM PARCEL MAP, S.J.C.R.
- RS RECORD OF SURVEY, S.J.C.R.
- CR CORNER RECORD, S.J.C.S.R.
- M&P MAPS AND PLATS, S.J.C.R.
- S.J.C.R. SAN JOAQUIN COUNTY RECORDS
- S.J.C.S.R. SAN JOAQUIN COUNTY SURVEYOR'S RECORDS

DESCRIPTIONS

- (1) FOUND MAG NAIL AND BRASS TAG (CR 13-203)
- (2) FOUND 3/4" IRON PIPE, LS 5340 (18 PM 167)
- (3) FOUND 1" IRON PIPE, OPEN (21 RS 11)
- (4) TIP OF PAINT ARROW, NW CORNER OF CONCRETE AROUND STORM DRAIN MANHOLE
- (5) TIP OF PAINT ARROW, SW CORNER OF CONCRETE AROUND STORM DRAIN MANHOLE
- (6) SET 5/8" REBAR WITH CBG CONTROL CAP 1 FOOT EAST OF POWER POLE
- (7) TIP OF PAINT ARROW, SW CORNER OF, AND ON THE OUTSIDE EDGE OF, THE CONCRETE COLLAR AROUND THE MOST SOUTHERN OF THREE 7' X 14' PG&E GAS UTILITY VAULTS

NOTE

THE INTENT IS TO ESTABLISH REFERENCE TIES TO FOUND MONUMENTS, NOT TO SPECIFY HOW THOSE MONUMENTS RELATE TO PROPERTY LINES. MAP REFERENCES ARE GEOGRAPHIC REFERENCES ONLY.