

CORNER RECORD

Agency Index

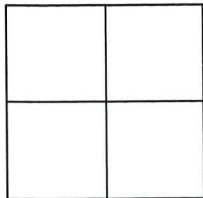
CR-25-263

Document Number

City of Lodi

County of SAN JOAQUIN, California

Brief Legal Description CITY OF LODI BENCHMARK # 828

CORNER TYPE**COORDINATES (Optional)**

- ☐ Government Corner ☒ Control
☐ Meander ☐ Property
☐ Rancho ☐ Other

N. E.

Elevation

Units Metric ☐ U.S. Survey Foot ☐

Horizontal Datum

Zone Epoch Date

Vertical Datum

Date of Survey 6-5-2025

☐ Complies with Public Resources Code §§8801-8819☐ Complies with Public Resources Code §§8890-8902PLS Act Ref: ☐ 8765(d)☒ 8771☐ 8773☐ Other:Corner/Monument: ☒ Left as found☐ Established☐ Rebuilt☐ Pre-Construction☐ Found and tagged ☐ Reestablished☒ Referenced☐ Post-Construction

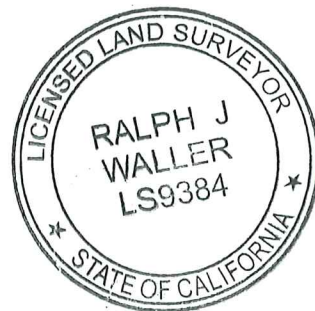
Narrative of corner identified and monument as found, set, reset, replaced, or removed:

☒ See sheet #2 for description (s):

FOUND CITY BENCHMARK # 828. THIS POINT WAS REFERENCED PRIOR TO A CONSTRUCTION PROJECT IN THE VICINITY. THE TIES SHOWN HEREON ARE FOR THE PURPOSE OF PERPETUATING FOUND MONUMENTATION. NO CLAIM IS MADE AS TO THE RELATIONSHIP OF THE POINTS OR LINES SHOWN HEREON. REFERENCE ELEVATIONS SHOWN ARE DERIVED FROM HOLDING CITY OF LODI BENCHMARK (NGVD 29) WITH A PUBLISHED ELEVATION OF 52.06.

SURVEYOR'S STATEMENT

This Corner Record was prepared by me or under my direction in conformance with the Professional Land Surveyors' Act on 6-9-2025

Signed  P.L.S. or R.C.E. No. LS 9384**COUNTY SURVEYOR'S STATEMENT**

This Corner Record was received August 11, 2025

and examined and filed August 12, 2025

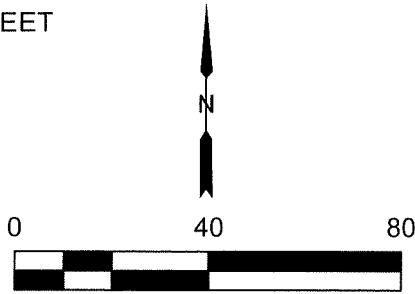
Signed James E. Hart P.L.S. or R.C.E. No. 8657

Title County Surveyor



County Surveyor's Comment

E VINE STREET



910
S CHEROKEE LANE
APN: 047-420-09

LEGEND

These standard symbols will be found in the drawing.

FOUND 2 1/2" BRASS DISC SET IN TOP OF CURB MARKED CITY OF LODI BENCH MARK 828

SET 1/2" BRASS TAG LS 9384 RP

EDGE OF CONCRETE

BACK OF SIDEWALK

TIE LINES

TOP FACE OF CURB

EDGE OF PAVEMENT

DRIVE WAY

ASSESSOR PARCEL NUMBER



SW

SW

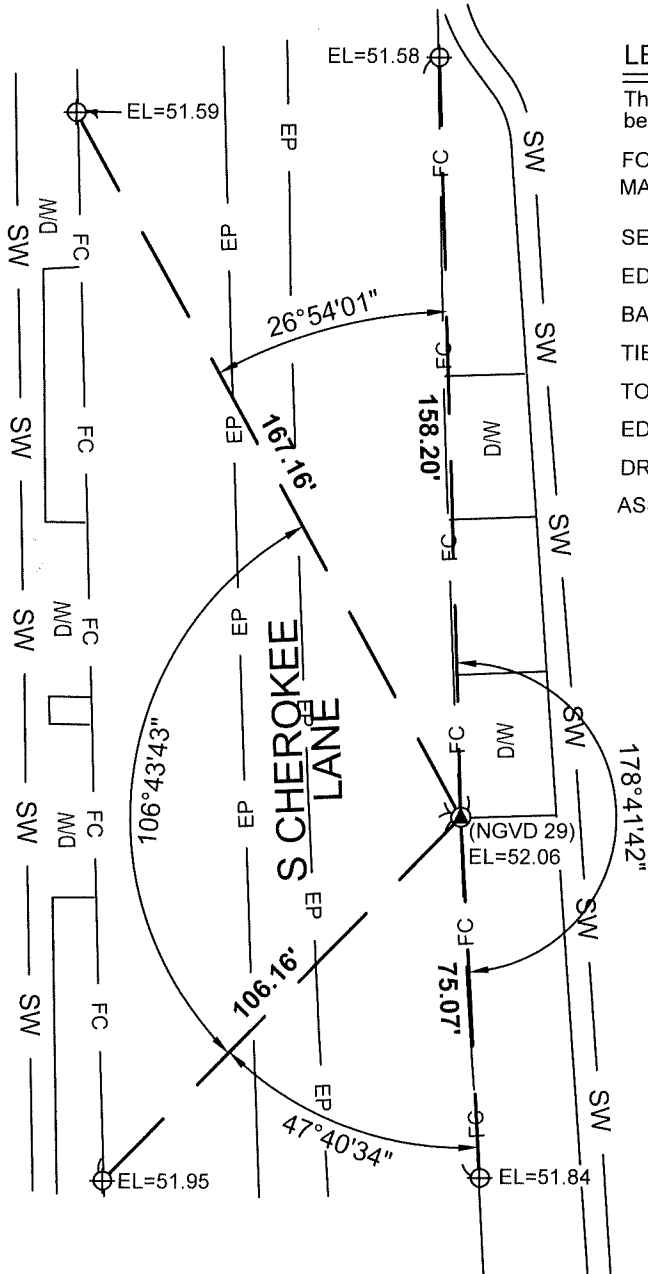
FC

EP

D/W

APN

921
S CHEROKEE LANE
APN: 047-390-07



920
S CHEROKEE LANE
APN: 047-420-11

BENCH MARK ELEVATION PER CITY OF LODI BENCHMARK (NGVD 29) FOUND ON CITY OF LODI WEBSITE.

DELORES STREET

DISTANCES ARE IN FEET AND DECIMAL THERE OF.

