

CORNER RECORD

Agency Index

CR-25-262

Document Number

City of

County of

SAN JOAQUIN

, California

Brief Legal Description

FOUND MONUMENTS ALONG THE EASTERLY RIGHT OF WAY LINE OF STATE HIGHWAY 88, PER RS 32-18, SAN JOAQUIN COUNTY RECORDS.

CORNER TYPE**COORDINATES (Optional)**

C.M. WEBER GRANT

- ☐ Government Corner ☐ Control
☐ Meander ☒ Property
☐ Rancho ☐ Other

Date of Survey May 4, 2023

N. E.

Elevation

Units ☐ Metric ☒ U.S. Survey Foot

Horizontal Datum

Zone Epoch Date

Vertical Datum

☐ Complies with Public Resources Code §§8801-8819☐ Complies with Public Resources Code §§8890-8902

PLS Act Ref.:

☐ 8765(d)☒ 8771☐ 8773☐ Other:Corner/
Monument:☒ Left as found☐ Established☐ Rebuilt☒ Pre-Construction☐ Found and tagged☐ Reestablished☒ Referenced☐ Post-Construction

Narrative of corner identified and monument as found, set, reset, replaced, or removed:

☒ See sheet #2 for description(s):

THE FOUND MONUMENT(S) SHOWN ON THIS CORNER RECORD WERE FOUND IN THE APPROXIMATE LOCATION OF THE CORNER(S) ON RS 32-18, SAN JOAQUIN COUNTY RECORDS. I DID NOT VERIFY THE IDENTITY AND VALIDITY OF THE MONUMENT FOUND AS ACTUALLY MARKING THE PROPERTY CORNER.

SURVEYOR'S STATEMENT

This Corner Record was prepared by me or under my direction in conformance with the Professional Land Surveyors' Act on February 6, 2024

Signed

P.L.S. or R.C.E. No.

8489

**COUNTY SURVEYOR'S STATEMENT**

This Corner Record was received

July 25, 2025

and examined and filed

August 12, 2025

Signed

P.L.S. or R.C.E. No.

8657

Title

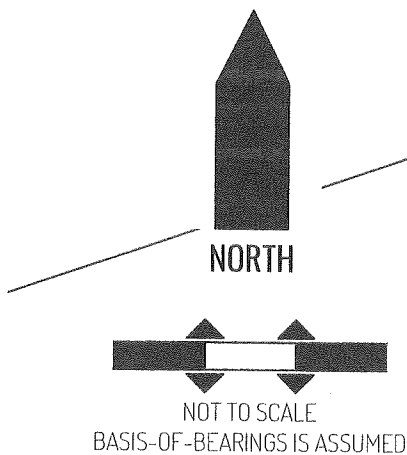
County Surveyor

County Surveyor's Comment



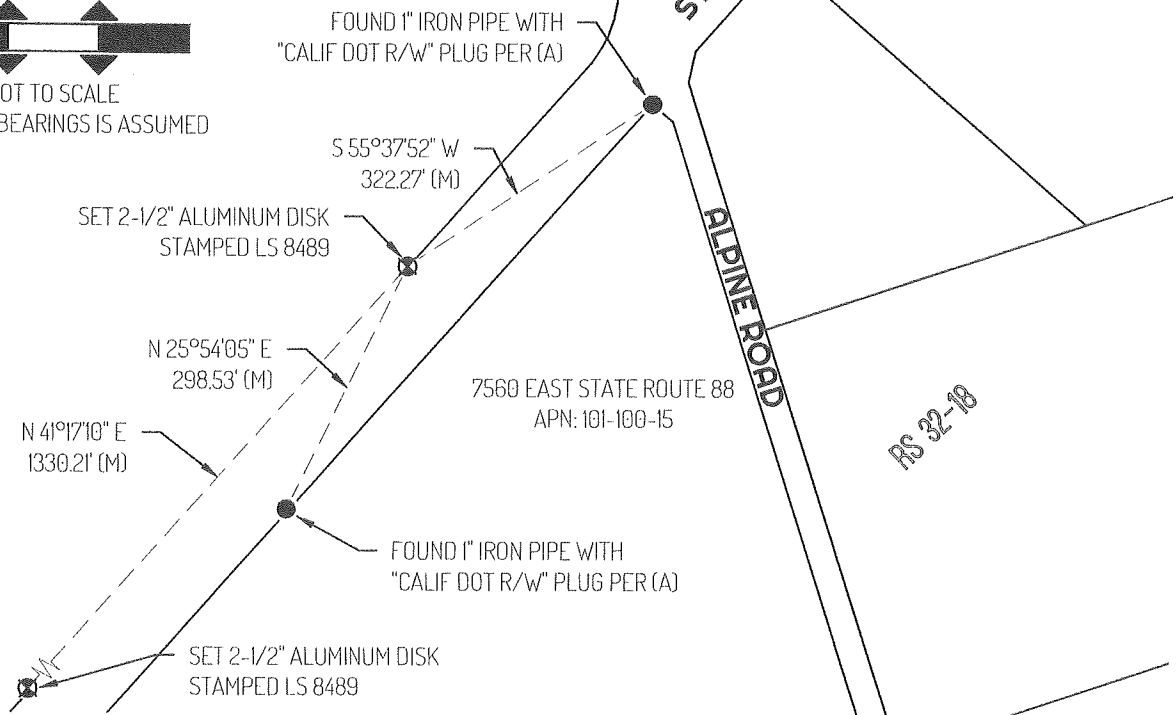
Document Number

Agency Index



NORTH

NOT TO SCALE
BASIS-OF-BEARINGS IS ASSUMED



LEGEND

●	FOUND MONUMENT AS NOTED
⊕	SET CONTROL POINT
7560	REFERENCE STREET ADDRESS
RS	RECORD OF SURVEY, SAN JOAQUIN COUNTY RECORDS
S.J.C.R.	SAN JOAQUIN COUNTY RECORDS
APN	TAX ASSESSOR PARCEL NUMBER
(M)	MEASURED
---	TIE LINE
---	LOT LINE

SURVEYOR NOTE(S)

THIS CORNER RECORD IS BEING FILED TO FULFILL THE PRE-CONSTRUCTION MONUMENT PRESERVATION REQUIREMENTS OF SECTION 8771 OF THE CALIFORNIA BUSINESS AND PROFESSIONS CODE. IT IS NOT THE RESULT OF A FULLY RESOLVED BOUNDARY SURVEY FOR ANY PARCEL OF REAL PROPERTY.

REFERENCE(S)

(A) RECORD OF SURVEY BOOK 32, AT PAGE 18, SAN JOAQUIN COUNTY RECORDS