

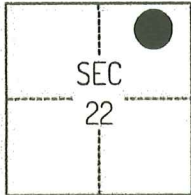
# CORNER RECORD

Agency Index

CR-25-260

Document Number

City of STOCKTON County of SAN JOAQUIN, California  
Brief Legal Description FOUND MONUMENTS NEAR THE EASTERN SIDE OF GEORGIA AVENUE PER CR-25-065, SAN JOAQUIN COUNTY SURVEYOR'S RECORDS.

**CORNER TYPE****COORDINATES (Optional)**

TIN/R6E

- ☐ Government Corner ☐ Control  
☐ Meander ☒ Property  
☐ Rancho ☐ Other

Date of Survey October 23, 2024

N. \_\_\_\_\_ E. \_\_\_\_\_

Elevation \_\_\_\_\_

Units ☐ Metric ☒ U.S. Survey Foot

Horizontal Datum \_\_\_\_\_

Zone \_\_\_\_\_ Epoch Date \_\_\_\_\_

Vertical Datum \_\_\_\_\_

☐ Complies with Public Resources Code §§8801-8819☐ Complies with Public Resources Code §§8890-8902

PLS Act Ref.:

☐ 8765(d)☒ 8771☐ 8773☐ Other:Corner/  
Monument:☒ Left as found☐ Established☐ Rebuilt☐ Pre-Construction☐ Found and tagged☐ Reestablished☒ Referenced☒ Post-Construction

Narrative of corner identified and monument as found, set, reset, replaced, or removed:

☒ See sheet #2 for description(s):

THE FOUND MONUMENTS SHOWN ON THIS CORNER RECORD WERE FOUND AT THE LOCATION OF THE CORNER(S) ON CORNER RECORD 25-065, SAN JOAQUIN COUNTY SURVEYOR'S RECORDS. I DID NOT VERIFY THE IDENTITY AND VALIDITY OF THE MONUMENTS FOUND AS ACTUALLY MARKING THE PROPERTY CORNER.

**SURVEYOR'S STATEMENT**

This Corner Record was prepared by me or under my direction in conformance with

the Professional Land Surveyors' Act on April 7, 2025

Signed

P.L.S. or R.C.E. No.

8489**COUNTY SURVEYOR'S STATEMENT**

This Corner Record was received

July 25, 2025

and examined and filed

August 12, 2025

Signed

P.L.S. or R.C.E. No.

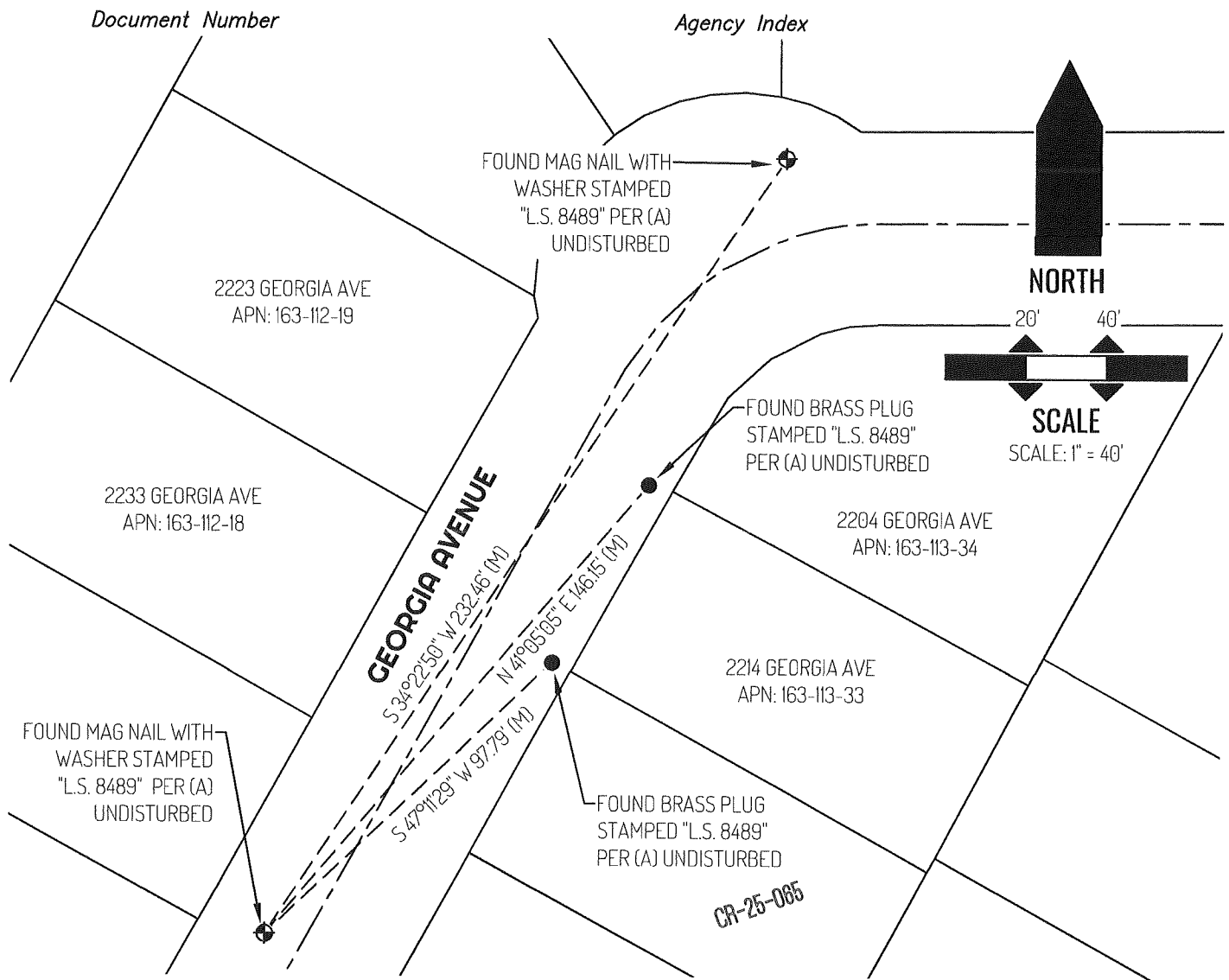
8657

Title

County Surveyor

County Surveyor's Comment





## LEGEND

●	FOUND MONUMENTS AS NOTED
⊕	FOUND CONTROL POINT AS NOTED
2204	REFERENCE STREET ADDRESS
CR	CORNER RECORD, SAN JOAQUIN COUNTY SURVEYOR'S RECORDS
(M)	MEASURED
APN	TAX ASSESSOR PARCEL NUMBER
---	TIE LINE
---	LOT LINE
---	RIGHT-OF-WAY CENTERLINE

## REFERENCE

(A) CORNER RECORD 25-065, SAN JOAQUIN COUNTY SURVEYOR'S RECORDS