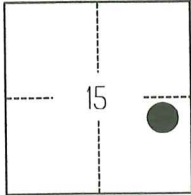


CORNER RECORD

Agency Index

CR-25-246

Document Number

City of STOCKTON County of SAN JOAQUIN, CaliforniaBrief Legal Description FOUND MONUMENTS SHOWN ON CORNER RECORD 23-089 SAN JOAQUIN COUNTY SURVEYOR'S RECORDS.**CORNER TYPE****COORDINATES (Optional)**

TIN/R6E

- ☐ Government Corner ☐ Control
☐ Meander ☒ Property
☐ Rancho ☐ Other

Date of Survey February 7, 2023

N. _____ E. _____

Elevation _____

Units ☐ Metric ☒ U.S. Survey Foot

Horizontal Datum _____

Zone _____ Epoch Date _____

Vertical Datum _____

☐ Complies with Public Resources Code §§8801-8819☐ Complies with Public Resources Code §§8890-8902

PLS Act Ref.:

☐ 8765(d)☒ 8771☐ 8773☐ Other:Corner/
Monument:☒ Left as found☐ Established☐ Rebuilt☐ Pre-Construction☐ Found and tagged☐ Reestablished☒ Referenced☒ Post-Construction

Narrative of corner identified and monument as found, set, reset, replaced, or removed:

☒ See sheet #2 for description(s):

THE FOUND MONUMENT(S) SHOWN ON THIS CORNER RECORD WERE FOUND AT THE LOCATION OF THE CORNER(S) ON CR 23-089, SAN JOAQUIN COUNTY SURVEYOR'S RECORDS. I DID NOT VERIFY THE IDENTITY AND VALIDITY OF THE MONUMENT FOUND AS ACTUALLY MARKING THE PROPERTY CORNER.

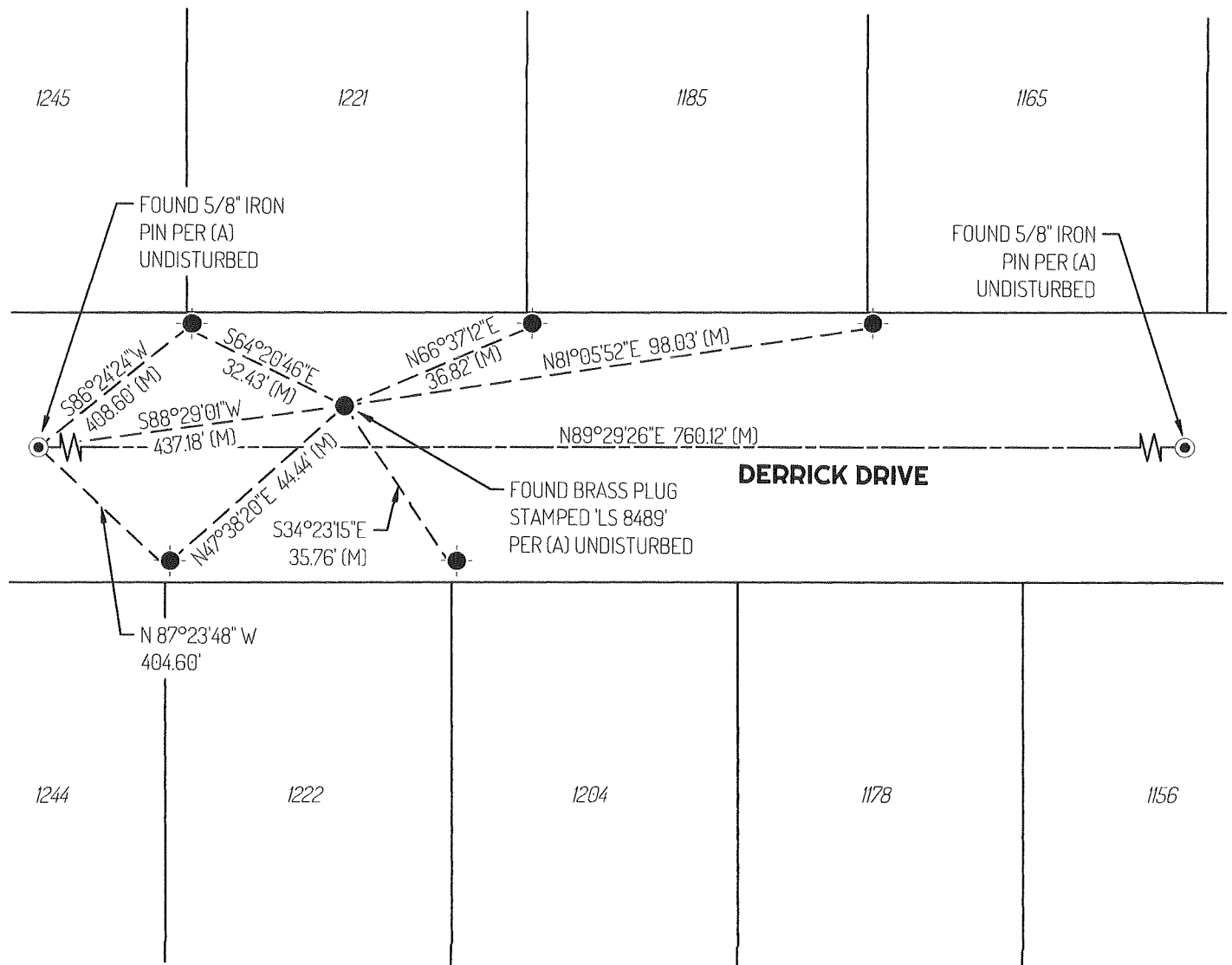
SURVEYOR'S STATEMENT

This Corner Record was prepared by me or under my direction in conformance with

the Professional Land Surveyors' Act on October 11, 2024Signed Scott L. Blake P.L.S. or R.C.E. No. 8489**COUNTY SURVEYOR'S STATEMENT**This Corner Record was received July 25, 2025and examined and filed August 12, 2025Signed James E. Hart P.L.S. or R.C.E. No. 8657Title County Surveyor

County Surveyor's Comment





LEGEND

- FOUND 5/8" IRON PIN TAGGED "RCE 14269" AS NOTED
- FOUND MONUMENT AS NOTED
- ✕ FOUND CHISELED CROSS PER (A) UNDISTURBED
- 1222 REFERENCE STREET ADDRESS
- (M) MEASURED
- TIE LINE
- LOT LINE
- -- RIGHT OF WAY CENTERLINE

REFERENCE

- (A) CORNER RECORD 23-089, SAN JOAQUIN COUNTY SURVEYOR'S RECORDS

