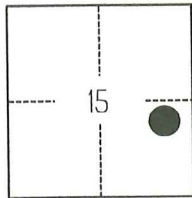


CORNER RECORD

Agency Index

CR-25-244

Document Number

City of STOCKTON County of SAN JOAQUIN, CaliforniaBrief Legal Description FOUND MONUMENTS SHOWN ON CORNER RECORD 23-087 SAN JOAQUIN COUNTY SURVEYOR'S RECORDS.**CORNER TYPE****COORDINATES (Optional)**

TIN/R6E

- ☐ Government Corner ☐ Control
☐ Meander ☒ Property
☐ Rancho ☐ Other

Date of Survey February 7, 2023

N. _____ E. _____

Elevation _____

Units ☐ Metric ☒ U.S. Survey Foot

Horizontal Datum _____

Zone _____ Epoch Date _____

Vertical Datum _____

☐ Complies with Public Resources Code §§8801-8819☐ Complies with Public Resources Code §§8890-8902

PLS Act Ref.:

☐ 8765(d)☒ 8771☐ 8773☐ Other:Corner/
Monument:☒ Left as found☐ Established☐ Rebuilt☐ Pre-Construction☐ Found and tagged☐ Reestablished☒ Referenced☒ Post-Construction

Narrative of corner identified and monument as found, set, reset, replaced, or removed:

☒ See sheet #2 for description(s):

THE FOUND MONUMENT(S) SHOWN ON THIS CORNER RECORD WERE FOUND AT THE LOCATION OF THE CORNER(S) ON CR 23-087, SAN JOAQUIN COUNTY SURVEYOR'S RECORDS. I DID NOT VERIFY THE IDENTITY AND VALIDITY OF THE MONUMENT FOUND AS ACTUALLY MARKING THE PROPERTY CORNER.

SURVEYOR'S STATEMENT

This Corner Record was prepared by me or under my direction in conformance with

the Professional Land Surveyors' Act on October 9, 2024

Signed

P.L.S. or R.C.E. No.

8489

**COUNTY SURVEYOR'S STATEMENT**

This Corner Record was received

July 25, 2025

and examined and filed

August 12, 2025

Signed

P.L.S. or R.C.E. No.

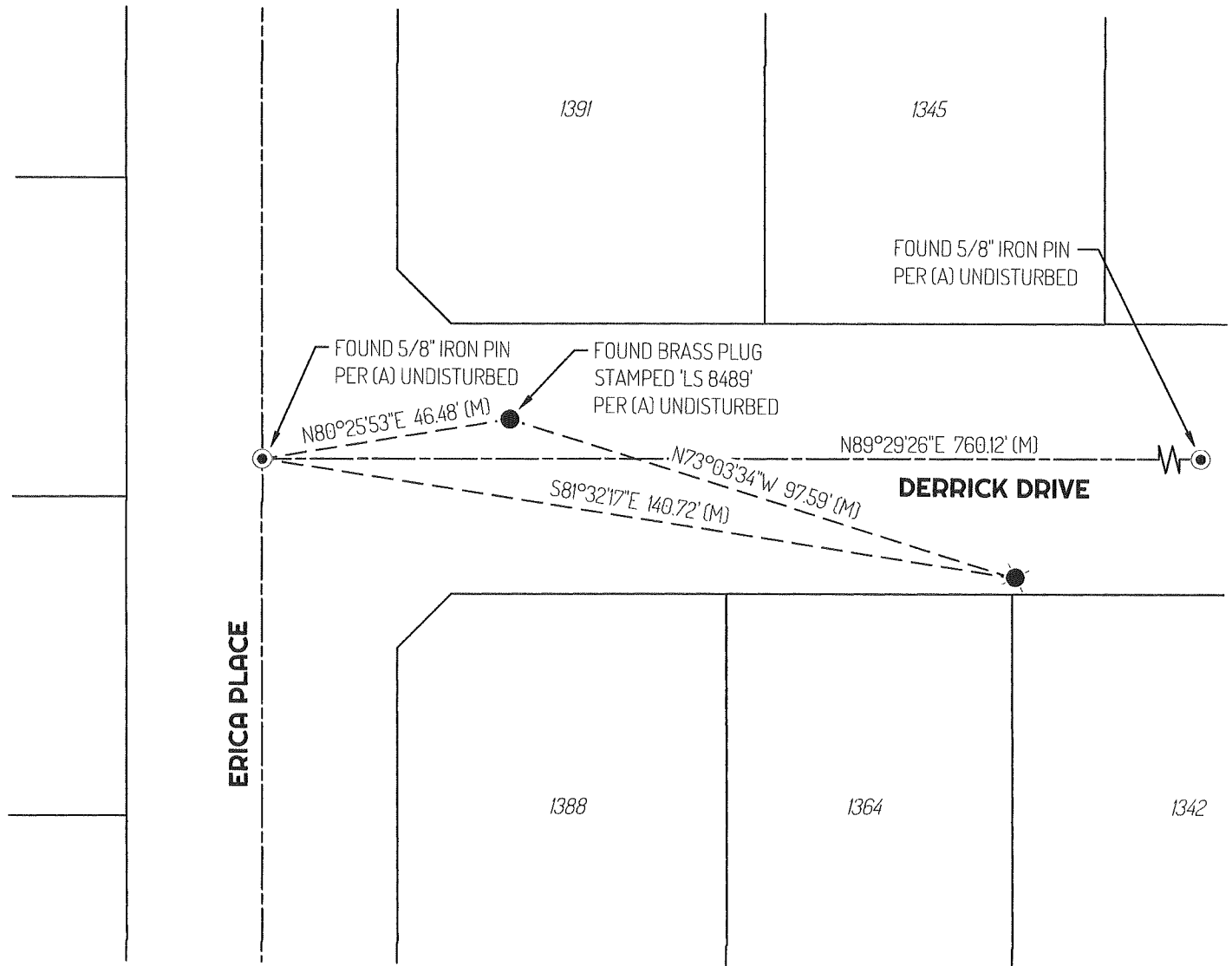
8657

Title

County Surveyor

County Surveyor's Comment





LEGEND

- FOUND 5/8" IRON PIN TAGGED "RCE 14269" AS NOTED
- FOUND MONUMENT AS NOTED
- ⊕ FOUND CHISELED CROSS PER (A) UNDISTURBED
- 1388 REFERENCE STREET ADDRESS
- (M) MEASURED
- TIE LINE
- LOT LINE
- RIGHT OF WAY CENTERLINE

REFERENCE

- (A) CORNER RECORD 23-087, SAN JOAQUIN COUNTY SURVEYOR'S RECORDS

