

CORNER RECORD

Agency Index

CR-25-232

Document Number

City of Stockton County of San Joaquin, CaliforniaBrief Legal Description A portion of the North line of Block "I" per M.&P. 3-59, S.J.C.R.**CORNER TYPE****COORDINATES (Optional)**

- ☐ Government Corner ☐ Control
☐ Meander ☒ Property
☐ Rancho ☐ Other

Date of Survey June 24, 2025

N. _____ E. _____

Elevation _____

Units

☐ Metric☐ U.S. Survey Foot

Horizontal Datum _____

Zone _____ Epoch Date _____

Vertical Datum _____

☐ Complies with Public Resources Code §§8801-8819☐ Complies with Public Resources Code §§8890-8902

C.M. WEBER GRANT

PLS Act Ref.:

☐ 8765(d)☒ 8771☐ 8773☐ Other:Corner/
Monument:☐ Left as found☐ Established☐ Rebuilt☐ Pre-Construction☐ Found and tagged☒ Reestablished☐ Referenced☐ Post-Construction

Narrative of corner identified and monument as found, set, reset, replaced, or removed:

☒ See sheet #2 for description(s):**SURVEYOR'S STATEMENT**

This Corner Record was prepared by me or under my direction in conformance with

the Professional Land Surveyors' Act on

July 10, 2025

Signed

P.L.S. or R.C.E. No.

7269**COUNTY SURVEYOR'S STATEMENT**

This Corner Record was received

July 15, 2025

and examined and filed

July 18, 2025

Signed

P.L.S. or R.C.E. No.

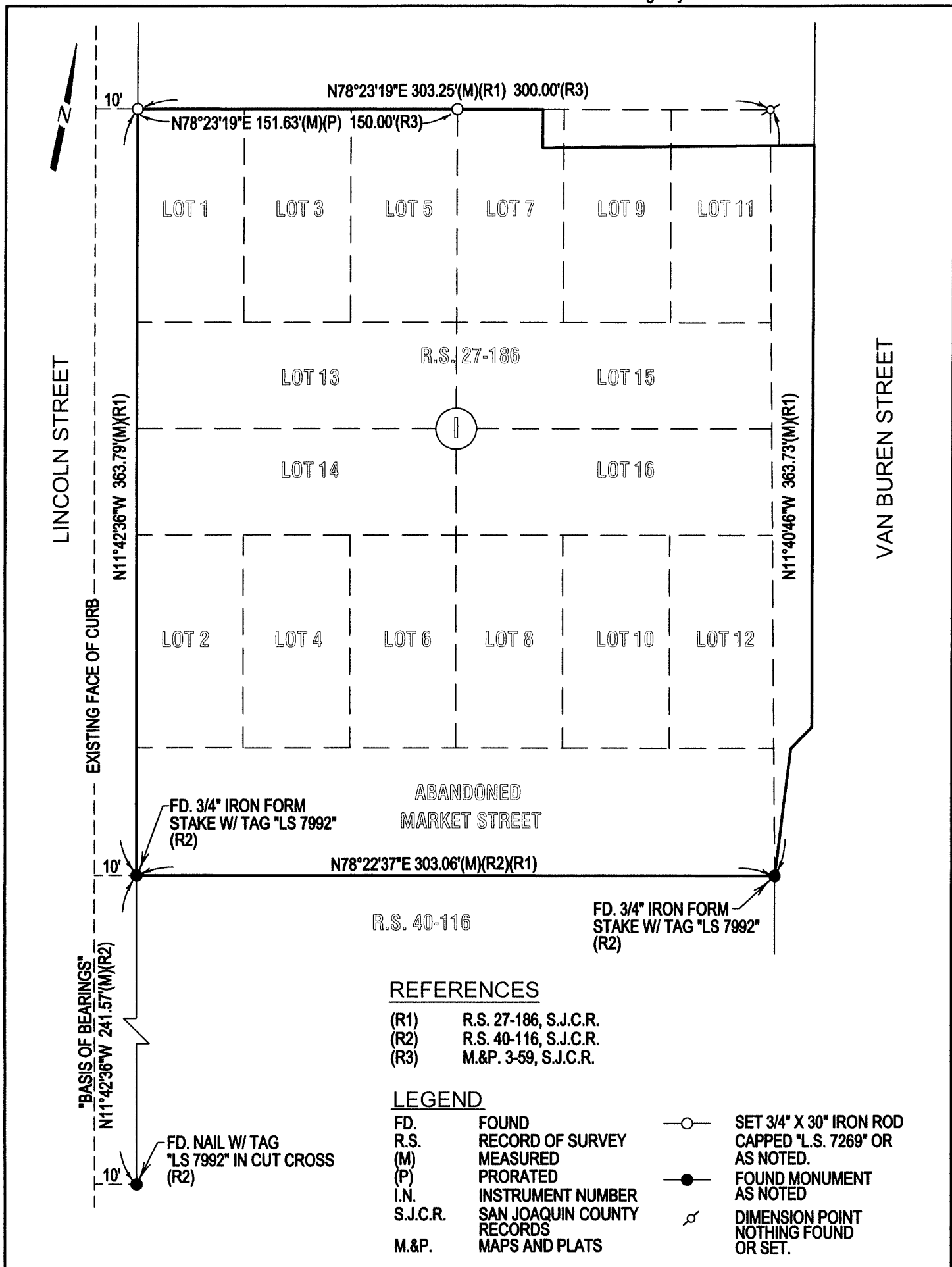
8657

Title

County Surveyor

County Surveyor's Comment





REFERENCES

- (R1) R.S. 27-186, S.J.C.R.
- (R2) R.S. 40-116, S.J.C.R.
- (R3) M.&P. 3-59, S.J.C.R.

LEGEND

- FD. FOUND
- R.S. RECORD OF SURVEY
- (M) MEASURED
- (P) PRORATED
- I.N. INSTRUMENT NUMBER
- S.J.C.R. SAN JOAQUIN COUNTY RECORDS
- M.&P. MAPS AND PLATS

- SET 3/4" X 30" IRON ROD CAPPED "L.S. 7269" OR AS NOTED.
- FOUND MONUMENT AS NOTED
- ⊗ DIMENSION POINT NOTHING FOUND OR SET.