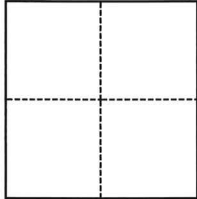


# CORNER RECORD

Agency Index

CR-25-231

Document Number

City of \_\_\_\_\_ County of San Joaquin, CaliforniaBrief Legal Description Found 2 nail and washers with no tag along the centerline of River Drive & Rainier Ave.  
No record document identified.**CORNER TYPE****COORDINATES (Optional)**

- ☐ Government Corner ☐ Control  
☐ Meander ☐ Property  
☐ Rancho ☒ Other

Date of Survey May 13, 2025

N. \_\_\_\_\_ E. \_\_\_\_\_

Elevation \_\_\_\_\_

Units ☐ Metric ☒ U.S. Survey FootHorizontal Datum NAD 83Zone 3 Epoch Date 1991.35

Vertical Datum \_\_\_\_\_

☒ Complies with Public Resources Code §§8801-8819☐ Complies with Public Resources Code §§8890-8902

PLS Act Ref.:

☐ 8765(d)☐ 8771☐ 8773☒ Other:Corner/  
Monument:☒ Left as found☐ Established☐ Rebuilt☒ Pre-Construction☐ Found and tagged☐ Reestablished☐ Referenced☐ Post-Construction

Narrative of corner identified and monument as found, set, reset, replaced, or removed:

☒ See sheet #2 for description(s):

This Corner Record is the pre-potholing exploration location of found monuments within a 50 ft radius of the proposed pothole location. After potholing activities are complete, a follow up survey will be performed to confirm that no monuments have been disturbed. If monuments have been disturbed a durable replacement monument will be installed and a Post-Construction Corner Record will be completed and submitted.

**SURVEYOR'S STATEMENT**

This Corner Record was prepared by me or under my direction in conformance with

the Professional Land Surveyors' Act on July 8, 2025Signed  P.L.S. or R.C.E. No. 9916**COUNTY SURVEYOR'S STATEMENT**

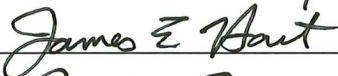
This Corner Record was received

July 9, 2025

and examined and filed

July 18, 2025

Signed

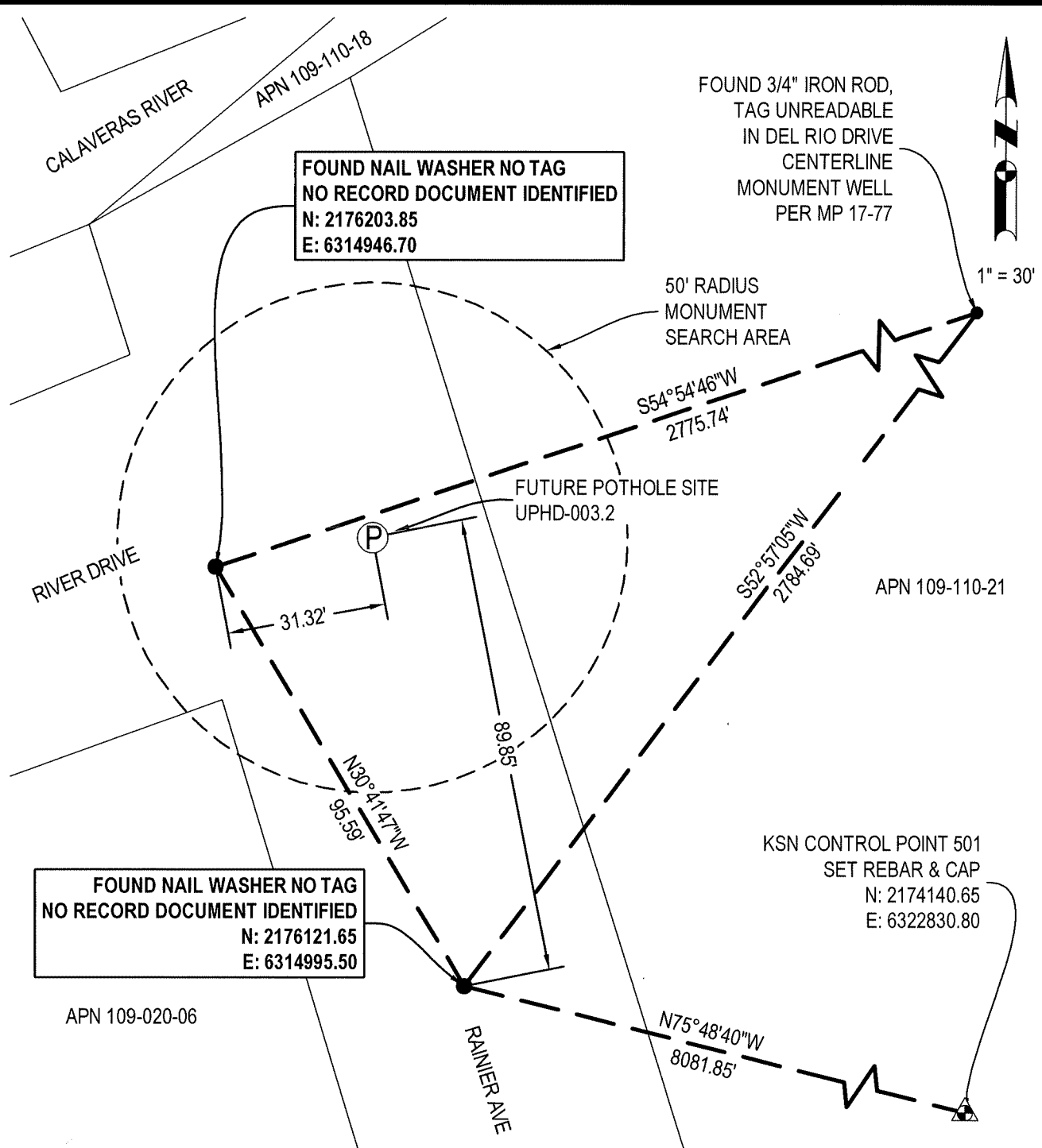
P.L.S. or R.C.E. No. 8657

Title

County Surveyor

County Surveyor's Comment



**SURVEY CONTROL STATEMENT**

COORDINATES, BEARINGS AND DISTANCES SHOWN ARE BASED ON THE NORTH AMERICAN DATUM OF 1983 (NAD 83) CONVERTED TO THE CALIFORNIA COORDINATE SYSTEM OF 1983, ZONE 3 (CCS83-Z3) AS REFERENCED BY AVAILABLE CITY OF STOCKTON AND NGS PUBLISHED CONTROL MONUMENTS. UNITS SHOWN ARE BASED ON THE U.S. SURVEY FOOT, EPOCH DATE 1991.35 ADJUSTMENT. ALL COORDINATES AND DISTANCES ARE GRID, TO CONVERT GRID DISTANCES TO GROUND, MULTIPLY BY 1.00005972. THE CONVERGENCE ANGLE IS -0°30'26". THE CSF WAS DETERMINED AT CONTROL POINT 501.

**NOTES:**

THIS SURVEY DOES NOT DEFINE BOUNDARY OR RIGHT OF WAY LINES. PARCEL LINES AND ROAD CENTERLINES SHOWN HEREON ARE FOR GENERAL LOCATION AND INFORMATION PURPOSES ONLY TO LOCATE THE PROJECT SITE. SAID LINEWORK IS BASED UPON 1/10/2024 SAN JOAQUIN COUNTY GIS PARCEL DATA.



MP: MAPS AND PLATS, SAN JOAQUIN COUNTY RECORDS  
APN: ASSESSOR'S PARCEL NUMBER