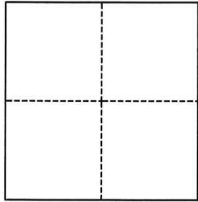


CORNER RECORD

Agency Index

CR-25-229

Document Number

City of _____ County of SAN JOAQUIN, CaliforniaBrief Legal Description SOUTHWEST QUARTER OF SECTION 16, T.3S., R.6E., M.D.B.&M.**CORNER TYPE****COORDINATES (Optional)**

- ☐ Government Corner ☐ Control
☐ Meander ☒ Property
☐ Rancho ☐ Other

Date of Survey May 12, 2025

N. _____ E. _____

Elevation _____

Units ☐ Metric ☒ U.S. Survey Foot

Horizontal Datum _____

Zone _____ Epoch Date _____

Vertical Datum _____

☐ Complies with Public Resources Code §§8801-8819☐ Complies with Public Resources Code §§8890-8902

PLS Act Ref.:

☐ 8765(d)☒ 8771☐ 8773☐ Other:Corner/
Monument:☐ Left as found☐ Established☐ Rebuilt☒ Pre-Construction☐ Found and tagged☐ Reestablished☐ Referenced☐ Post-Construction

Narrative of corner identified and monument as found, set, reset, replaced, or removed:

☒ See sheet #2 for description(s):**SURVEYOR'S STATEMENT**

This Corner Record was prepared by me or under my direction in conformance with

the Professional Land Surveyors' Act on May 22, 2025

Signed

Douglas F. Banks

P.L.S. or R.C.E. No.

8159**COUNTY SURVEYOR'S STATEMENT**

This Corner Record was received

June 3, 2025

and examined and filed

June 26, 2025

Signed

James E. Hart

P.L.S. or R.C.E. No.

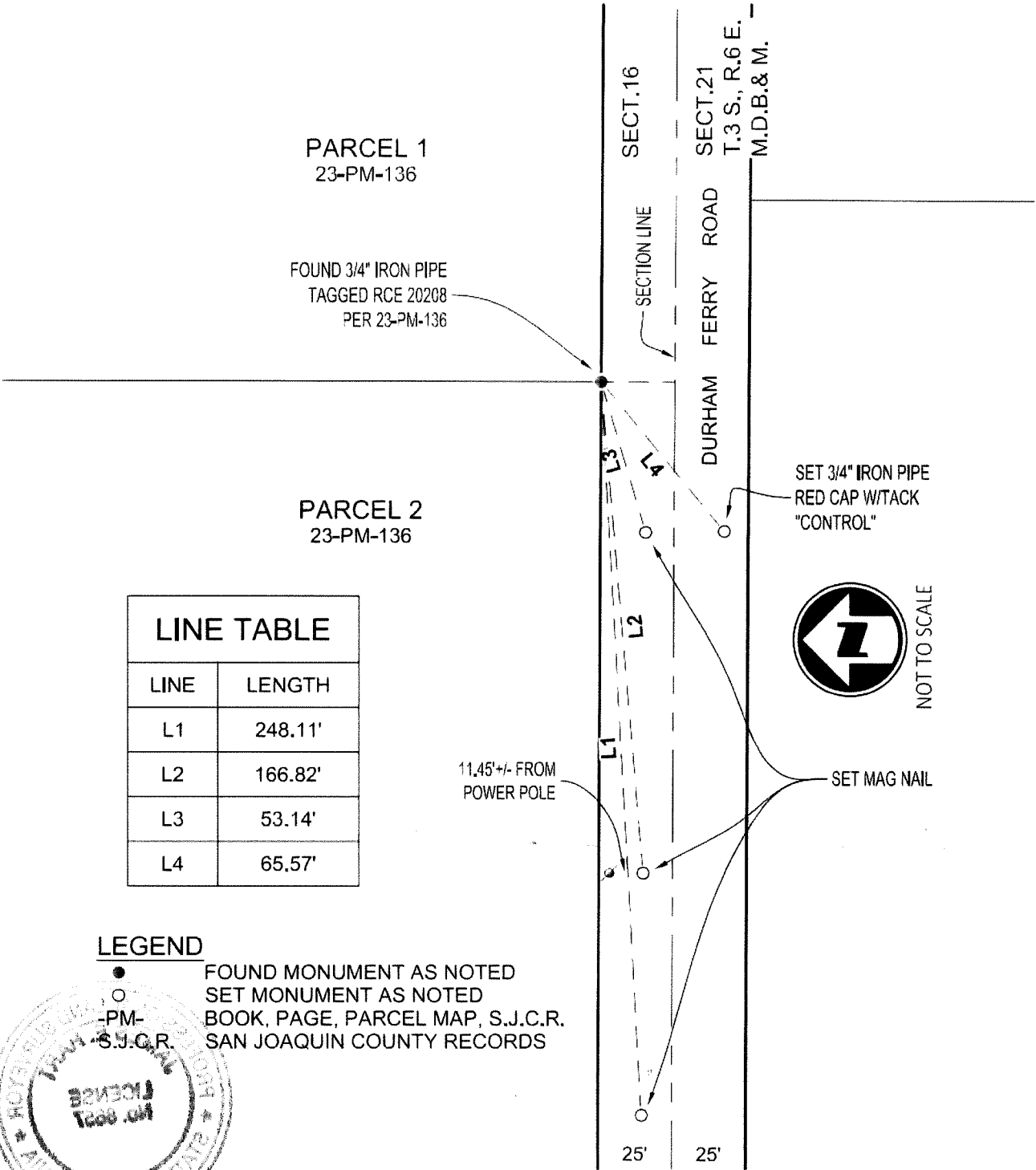
8657

Title

County Surveyor

County Surveyor's Comment





LEGEND

- FOUND MONUMENT AS NOTED
- SET MONUMENT AS NOTED
- PM- BOOK, PAGE, PARCEL MAP, S.J.C.R.
- S.J.C.R. SAN JOAQUIN COUNTY RECORDS

