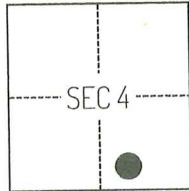


CORNER RECORD

Agency Index CR-25-228

Document Number _____

City of STOCKTON County of SAN JOAQUIN, CaliforniaBrief Legal Description FOUND MONUMENTS ON THE WESTERLY RIGHT-OF-WAY LINE OF LOWER SACRAMENTO ROAD, PER CR 24-418 SAN JOAQUIN COUNTY SURVEYOR'S RECORDS.**CORNER TYPE****COORDINATES (Optional)**

T2N/R6E

- ☐ Government Corner ☐ Control
☐ Meander ☒ Property
☐ Rancho ☐ Other

Date of Survey March 4, 2024

N. _____ E. _____

Elevation _____

Units ☐ Metric ☒ U.S. Survey Foot

Horizontal Datum _____

Zone _____ Epoch Date _____

Vertical Datum _____

☐ Complies with Public Resources Code §§8801-8819☐ Complies with Public Resources Code §§8890-8902

PLS Act Ref.:

☐ 8765(d)☒ 8771☐ 8773☐ Other:Corner/
Monument:☒ Left as found☐ Established☐ Rebuilt☐ Pre-Construction☐ Found and tagged☐ Reestablished☒ Referenced☒ Post-Construction

Narrative of corner identified and monument as found, set, reset, replaced, or removed:

☒ See sheet #2 for description(s):

THE FOUND MONUMENT(S) SHOWN ON THIS CORNER RECORD WERE FOUND AT THE LOCATION OF THE CORNER(S) ON CR 24-418, SAN JOAQUIN COUNTY SURVEYOR'S RECORDS. I DID NOT VERIFY THE IDENTITY AND VALIDITY OF THE MONUMENT FOUND AS ACTUALLY MARKING THE PROPERTY CORNER.

SURVEYOR'S STATEMENT

This Corner Record was prepared by me or under my direction in conformance with

the Professional Land Surveyors' Act on April 3, 2025

Signed

P.L.S. or R.C.E. No.

8489**COUNTY SURVEYOR'S STATEMENT**

This Corner Record was received

June 11, 2025

and examined and filed

June 23, 2025

Signed

P.L.S. or R.C.E. No.

8657

Title

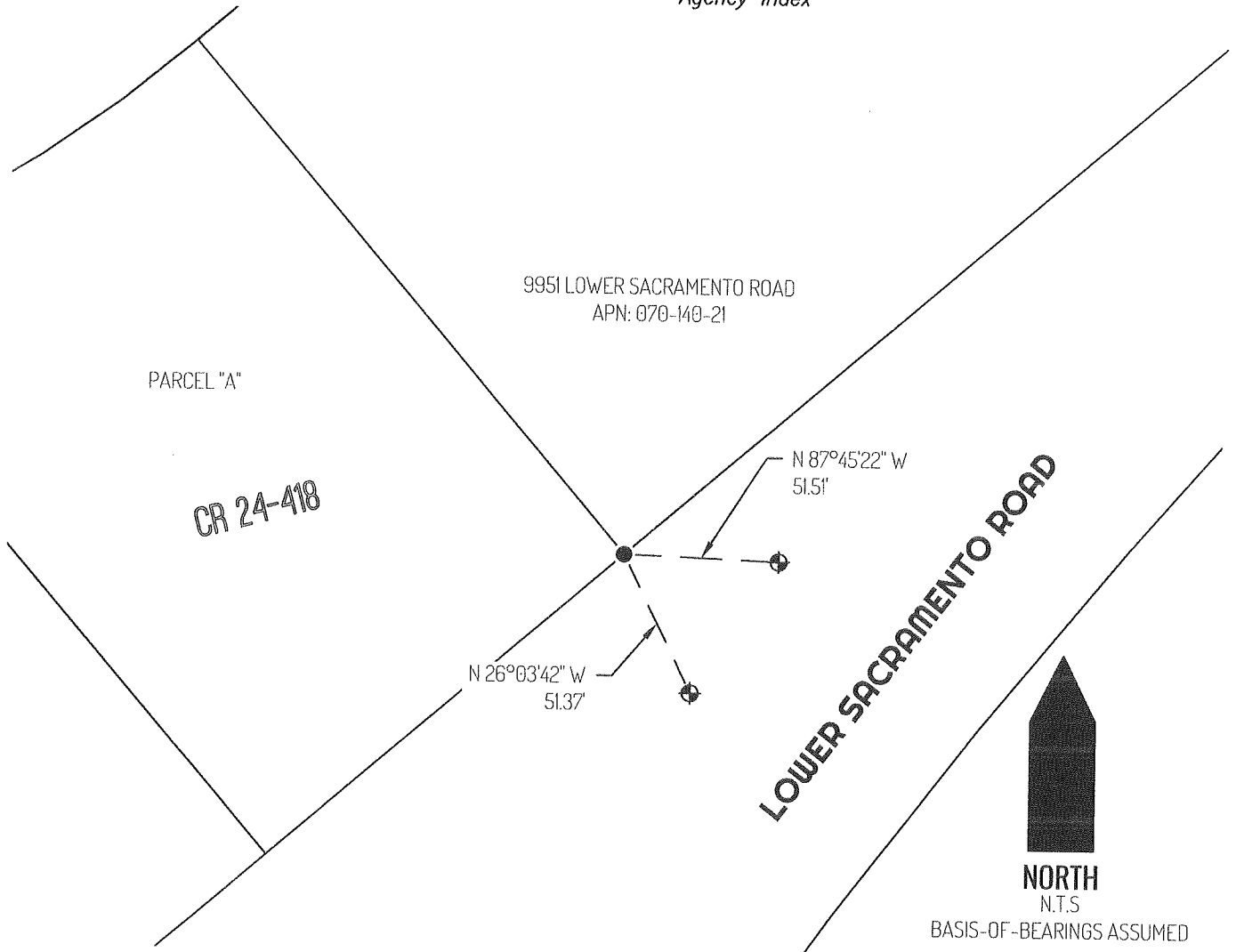
County Surveyor

County Surveyor's Comment



Document Number

Agency Index



LEGEND

●	FOUND 3/4" IRON PIN PER (A) UNDISTURBED
⊕	FOUND MAG NAIL AND WASHER STAMPED "LS 8489" PER (A) UNDISTURBED
9951	REFERENCE STREET ADDRESS
CR	CORNER RECORD, SAN JOAQUIN COUNTY SURVEYOR'S RECORDS
N.T.S.	NOT TO SCALE
APN	TAX ASSESSOR PARCEL NUMBER
---	TIE LINE
---	LOT LINE

REFERENCE

- (A) CORNER RECORD 24-418 SAN JOAQUIN COUNTY SURVEYOR'S RECORDS