

# CORNER RECORD

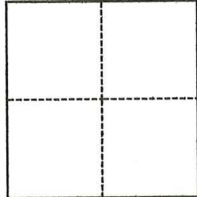
Agency Index

CR-25-217

Document Number

City of \_\_\_\_\_ County of SAN JOAQUIN, CaliforniaBrief Legal Description PARCEL 2, P.M. 27-34, S.J.C.R. APN # 007-340-15

X

SEC. 15  
T.4N., R.7E.  
M.D.B.&M.

## CORNER TYPE

- ☐ Government Corner ☐ Control  
☐ Meander ☒ Property  
☐ Rancho ☐ Other

Date of Survey May 16, 2025

## COORDINATES (Optional)

N. \_\_\_\_\_ E. \_\_\_\_\_

Elevation \_\_\_\_\_

Units ☐ Metric ☐ U.S. Survey Foot

Horizontal Datum \_\_\_\_\_

Zone \_\_\_\_\_ Epoch Date \_\_\_\_\_

Vertical Datum \_\_\_\_\_

☐ Complies with Public Resources Code §§8801-8819☐ Complies with Public Resources Code §§8890-8902PLS Act Ref.: ☐ 8765(d) ☒ 8771 ☐ 8773 ☐ Other:

Corner/  
Monument: ☒ Left as found ☐ Established ☐ Rebuilt ☐ Pre-Construction  
☐ Found and tagged ☐ Reestablished ☐ Referenced ☐ Post-Construction

Narrative of corner identified and monument as found, set, reset, replaced, or removed:

☒ See sheet #2 for description(s):

SEE SHEET 2 OF 2 FOR MONUMENTS FOUND.

## SURVEYOR'S STATEMENT

This Corner Record was prepared by me or under my direction in conformance with

the Professional Land Surveyors' Act on

06/05/2025

Signed

Walter John Shoup

P.L.S. or R.C.E. No.

L-7736

## COUNTY SURVEYOR'S STATEMENT

This Corner Record was received

June 6, 2025

and examined and filed

June 23, 2025

Signed

James E. Hart

P.L.S. or R.C.E. No.

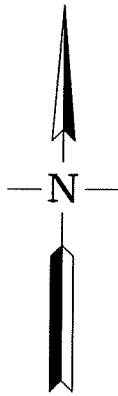
8657

Title

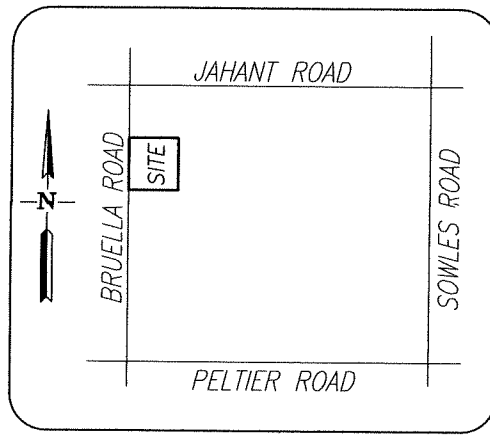
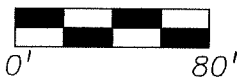
County Surveyor

County Surveyor's Comment





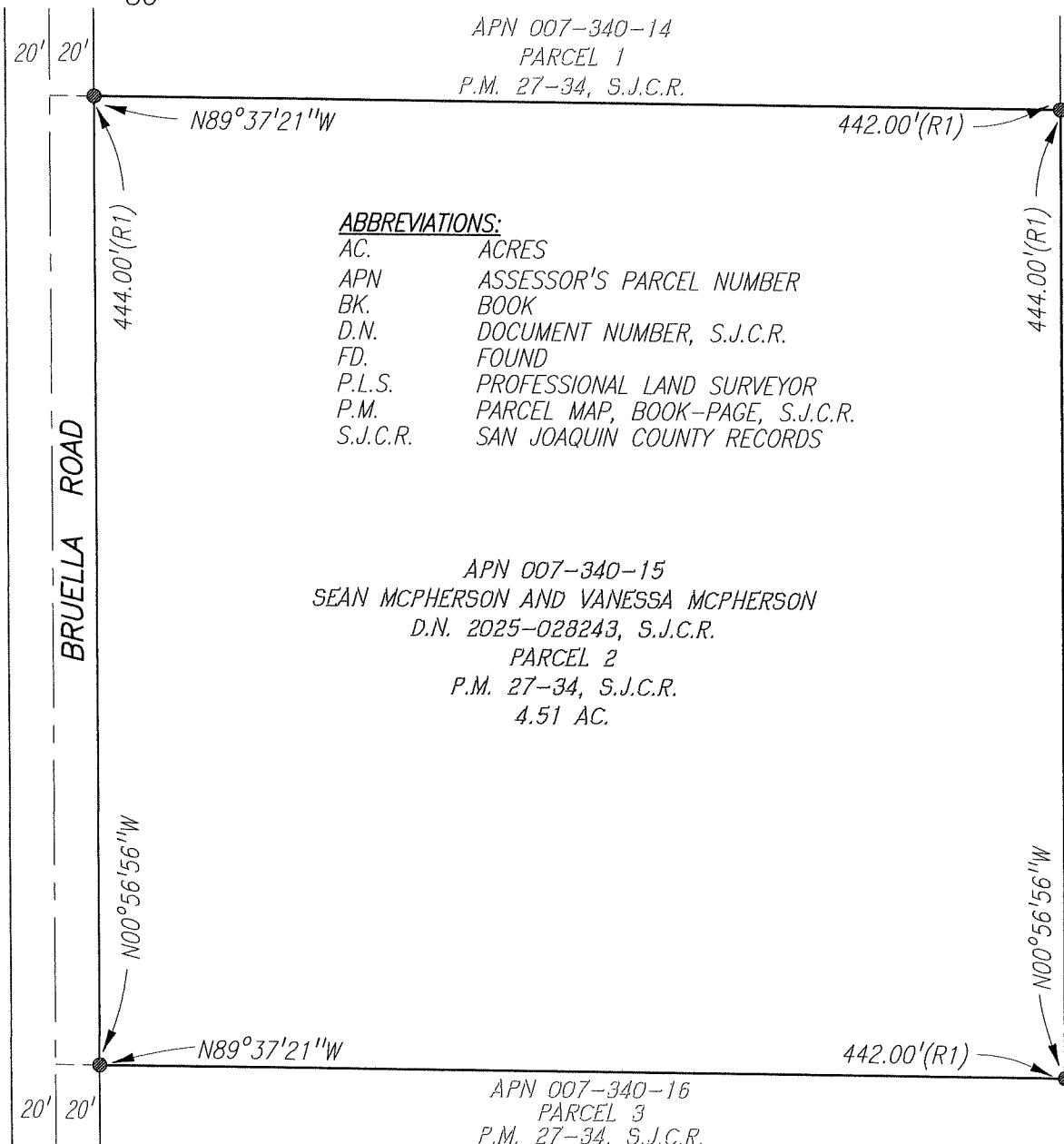
SCALE: 1" = 80'

VICINITY MAP

NO SCALE

MONUMENTS FOUNDFD. 3/4" REBAR WITH CAP  
STAMPED "PLS 7736" PER (R1)REFERENCES:

(R1) P.M. 27-34, S.J.C.R.



Scale: 1"=80'

Job No.: 25-072

**CORNER RECORD**  
**EXHIBIT MAP**

Date: 06/05/2025

DWG: 25072CR.DWG