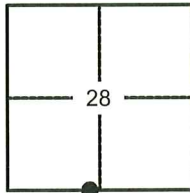


# CORNER RECORD

Agency Index: CR-25-211

Document Number: \_\_\_\_\_

City of MANTECA County of SAN JOAQUIN, CaliforniaBrief Legal Description MONUMENT AT THE INTERSECTION OF LOUISE AVENUE AND MT DEW AVENUE.

T.1S, R.7E

## CORNER TYPE

- ☐ Government Corner ☐ Control  
☐ Meander ☐ Property  
☐ Rancho ☒ Other

Date of Survey 09-24-2024

## COORDINATES (Optional)

N. \_\_\_\_\_ E. \_\_\_\_\_

Elevation \_\_\_\_\_

Units ☐ Metric ☐ U.S. Survey Foot

Horizontal Datum \_\_\_\_\_

Zone \_\_\_\_\_ Epoch Date \_\_\_\_\_

Vertical Datum \_\_\_\_\_

☐ Complies with Public Resources Code SS8801-8819☐ Complies with Public Resources Code SS8890-8902PLS Act Ref: ☐ 8765(d) ☒ 8771 ☒ 8773 ☐ Other: \_\_\_\_\_

Corner/  
Monument: ☒ Left as found ☐ Established ☐ Rebuilt ☐ Pre-Construction  
☐ Found and Tagged ☐ Reestablished ☐ Referenced ☒ Post-Construction

Narrative of corner identified and monument as found, set, reset, replaced, or removed:

☒ See sheet #2 for description(s):FOUND ONE (1) 2.5" BRASS DISK, STAMPED "RCE 18420", IN A MONUMENT WELL AT THE INTERSECTION OF LOUISE AVENUE AND MT DEW AVENUE PER C.R. 24-261, S.J.C.S.R.FOUND FOUR (4) CONCRETE NAILS WITH BRASS TAGS, MARKED "L.S. 6953", AS WITNESS CORNERS. ALL AS SHOWN ON PAGE 2.

## SURVEYOR'S STATEMENT

This Corner Record was prepared by me or under my direction in conformance with

the Land Surveyors' Act on OCTOBER 11, 2024,Signed [Signature] P.L.S. or ~~R.C.E.~~ Number 6953

## COUNTY SURVEYOR'S STATEMENT

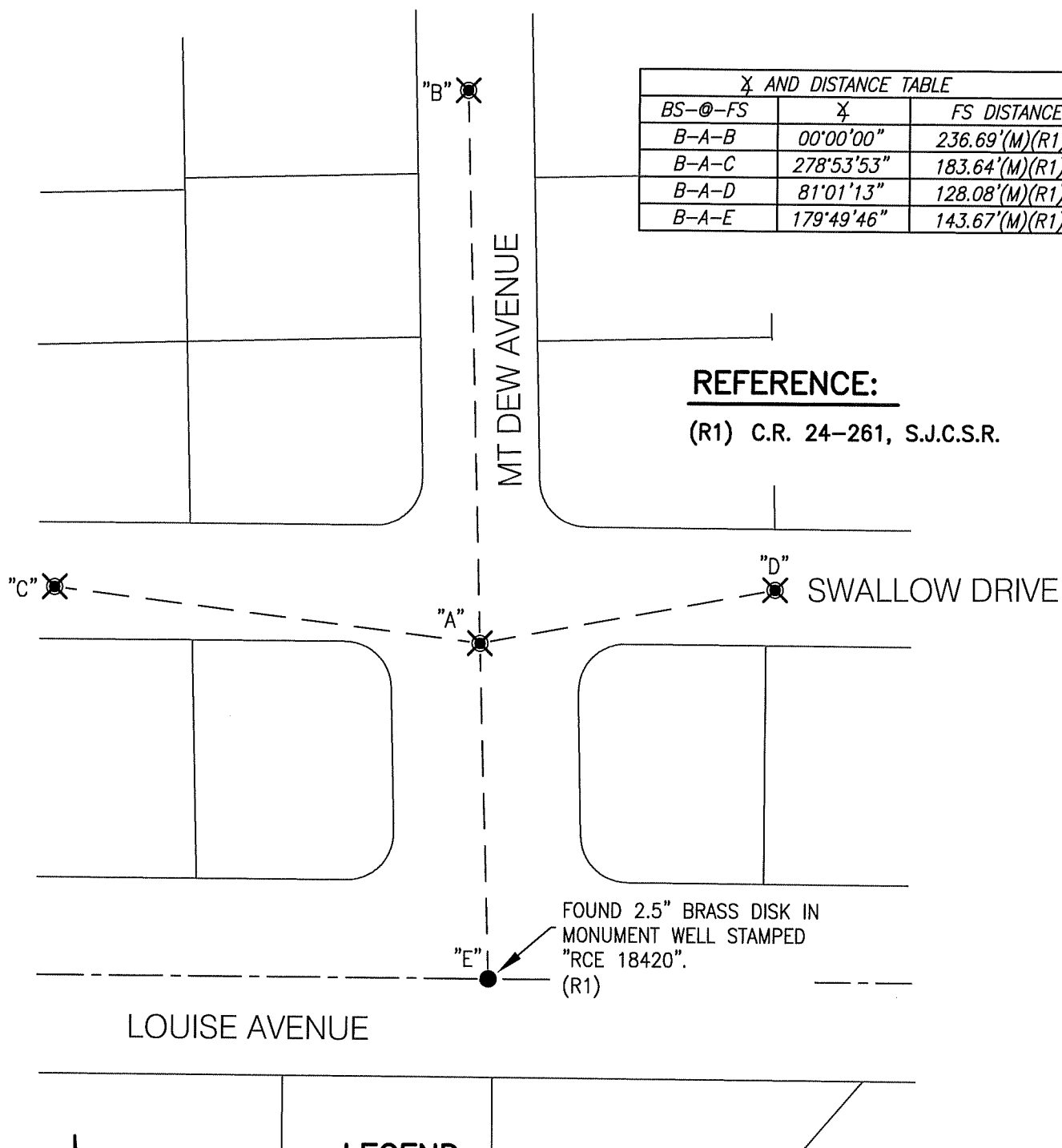
This Corner Record was received May 21, 2025and examined and filed June 3, 2025Signed James E. Hart P.L.S. or ~~R.C.E.~~ No: 8657Title County Surveyor

County Surveyor's Comment \_\_\_\_\_

$\chi$ AND DISTANCE TABLE		
BS-@-FS	$\chi$	FS DISTANCE
B-A-B	00°00'00"	236.69'(M)(R1)
B-A-C	278°53'53"	183.64'(M)(R1)
B-A-D	81°01'13"	128.08'(M)(R1)
B-A-E	179°49'46"	143.67'(M)(R1)

**REFERENCE:**

(R1) C.R. 24-261, S.J.C.S.R.

**LEGEND:**

FOUND CONCRETE NAILS W/ BRASS  
TAGS MARKED "L.S. 6953"



FOUND MONUMENT AS NOTED

S.J.C.R.

DENOTES SAN JOAQUIN COUNTY RECORDS

S.J.C.S.R.

DENOTES SAN JOAQUIN COUNTY SURVEYOR'S RECORDS

(M)

MEASURED DISTANCE. ALL DISTANCES ARE  
MEASURED UNLESS OTHERWISE NOTED

C.R.

DENOTES CORNER RECORD

NOT TO SCALE