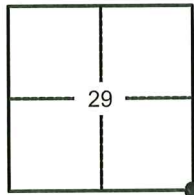


# CORNER RECORD

Agency Index: CR-25-210

Document Number: \_\_\_\_\_

City of MANTECACounty of SAN JOAQUIN, CaliforniaBrief Legal Description SOUTHEAST CORNER SECTION 29, TOWNSHIP 1 SOUTH, RANGE 7 EAST, MOUNT DIABLO BASE AND MERIDIAN, AT THE INTERSECTION OF LOUISE AVENUE AND MAIN STREET.

T.1S, R.7E

## CORNER TYPE

- ☒ Government Corner ☐ Control  
☐ Meander ☐ Property  
☐ Rancho ☐ Other

Date of Survey 09-24-2024

## COORDINATES (Optional)

N. \_\_\_\_\_ E. \_\_\_\_\_

Elevation \_\_\_\_\_

Units ☐ Metric ☐ U.S. Survey Foot

Horizontal Datum \_\_\_\_\_

Zone \_\_\_\_\_ Epoch Date \_\_\_\_\_

Vertical Datum \_\_\_\_\_

☐ Complies with Public Resources Code SS8801-8819☐ Complies with Public Resources Code SS8890-8902PLS Act Ref: ☐ 8765(d) ☒ 8771 ☒ 8773 ☐ Other:

Corner/  
Monument: ☒ Left as found ☐ Established ☐ Rebuilt ☐ Pre-Construction  
☐ Found and Tagged ☐ Reestablished ☐ Referenced ☒ Post-Construction

Narrative of corner identified and monument as found, set, reset, replaced, or removed:

☒ See sheet #2 for description(s):

FOUND ONE (1) 3/4" IRON PIN, NOT TAGGED, IN A MONUMENT WELL AT THE INTERSECTION OF LOUISE AVENUE AND MAIN STREET, BEING AT THE SOUTHEAST CORNER OF SECTION 29, T.1S., R.7E., M.D.B.&M.

FOUND FOUR (4) CONCRETE NAILS WITH BRASS TAGS, MARKED "L.S. 6953", AS WITNESS CORNERS.

ALL AS SHOWN ON PAGE 2.

## SURVEYOR'S STATEMENT

This Corner Record was prepared by me or under my direction in conformance with the Land Surveyors' Act on OCTOBER 11, 2024,

Signed [Signature] P.L.S. or R.C.E. Number 6953

## COUNTY SURVEYOR'S STATEMENT

This Corner Record was received June 3, 2025and examined and filed June 20, 2025Signed James E. Hart P.L.S. or R.C.E. No: 8657Title County Surveyor

County Surveyor's Comment \_\_\_\_\_

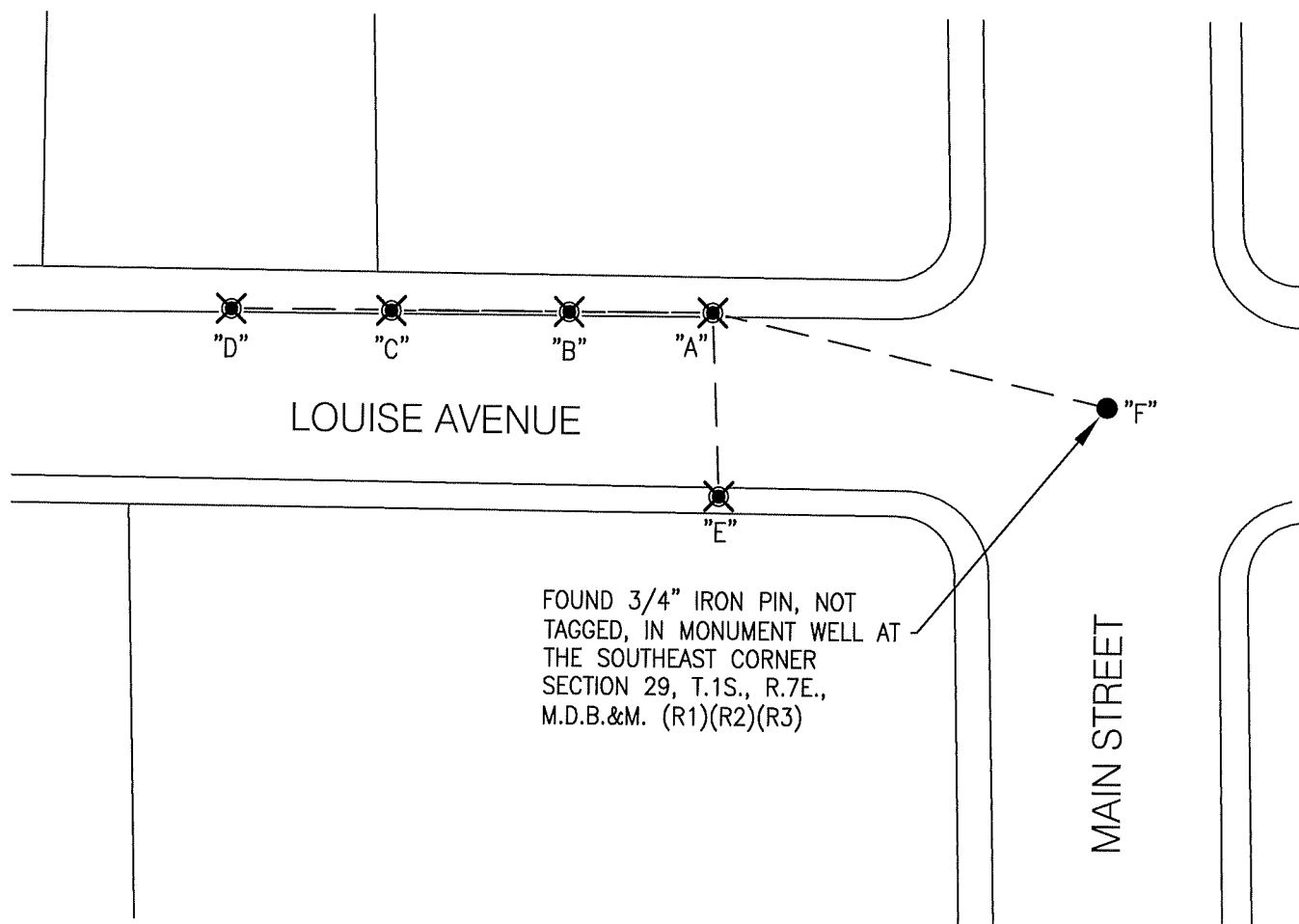
**REFERENCES:**

- (R1) C.R. 06-06, S.J.C.S.R.  
 (R2) 23-S-160, S.J.C.R.  
 (R3) C.R. 24-304, S.J.C.S.R.

<i>℄ AND DISTANCE TABLE</i>		
<i>BS-@-FS</i>	<i>℄</i>	<i>FS DISTANCE</i>
<i>D-A-D</i>	<i>00°00'00"</i>	<i>171.53'(M)(R3)</i>
<i>D-A-B</i>	<i>359°54'57"</i>	<i>51.12'(M)(R3)</i>
<i>D-A-C</i>	<i>359°54'04"</i>	<i>114.42'(M)(R3)</i>
<i>D-A-E</i>	<i>267°31'40"</i>	<i>65.35'(M)(R3)</i>
<i>D-A-F</i>	<i>192°59'03"</i>	<i>144.55'(M)(R3)</i>

**NOTE:**

THIS CORNER RECORD DOES NOT VERIFY THIS  
 MONUMENT TO BE IN THE CORRECT POSITION.

**LEGEND:**

FOUND CONCRETE NAILS W/ BRASS  
 TAGS MARKED "L.S. 6953".



FOUND MONUMENT AS NOTED

(M)

MEASURED DISTANCE. ALL DISTANCES ARE  
 MEASURED UNLESS OTHERWISE NOTED.

S.J.C.R.

DENOTES SAN JOAQUIN COUNTY RECORDS

S.J.C.S.R.

DENOTES SAN JOAQUIN COUNTY SURVEYOR'S RECORDS

-S-

DENOTES RECORD OF SURVEY

C.R.

DENOTES CORNER RECORD



NOT TO SCALE