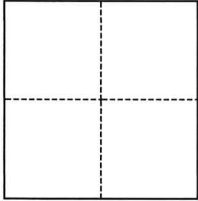


# CORNER RECORD

Agency Index

CR-25-202

Document Number

City of \_\_\_\_\_ County of San Joaquin, CaliforniaBrief Legal Description A Portion of the N.E. 1/4 of Section 28, T.2 N., R.8 E.**CORNER TYPE****COORDINATES (Optional)**

- ☐ Government Corner ☐ Control  
☐ Meander ☒ Property  
☐ Rancho ☐ Other

Date of Survey May 6, 2025

N. \_\_\_\_\_ E. \_\_\_\_\_

Elevation \_\_\_\_\_

Units ☐ Metric ☐ U.S. Survey Foot

Horizontal Datum \_\_\_\_\_

Zone \_\_\_\_\_ Epoch Date \_\_\_\_\_

Vertical Datum \_\_\_\_\_

☐ Complies with Public Resources Code §§8801-8819☐ Complies with Public Resources Code §§8890-8902

PLS Act Ref.:

☐ 8765(d)☒ 8771☐ 8773☐ Other:Corner/  
Monument:☒ Left as found☐ Established☐ Rebuilt☐ Pre-Construction☐ Found and tagged☐ Reestablished☒ Referenced☒ Post-Construction

Narrative of corner identified and monument as found, set, reset, replaced, or removed:

☒ See sheet #2 for description(s):**SURVEYOR'S STATEMENT**

This Corner Record was prepared by me or under my direction in conformance with

the Professional Land Surveyors' Act on May 6, 2025

Signed

P.L.S. or R.C.E. No.

PLS 7889**COUNTY SURVEYOR'S STATEMENT**

This Corner Record was received

May 30, 2025

and examined and filed

June 5, 2025

Signed

P.L.S. or R.C.E. No.

8657

Title

County Surveyor

County Surveyor's Comment



**LEGEND:**

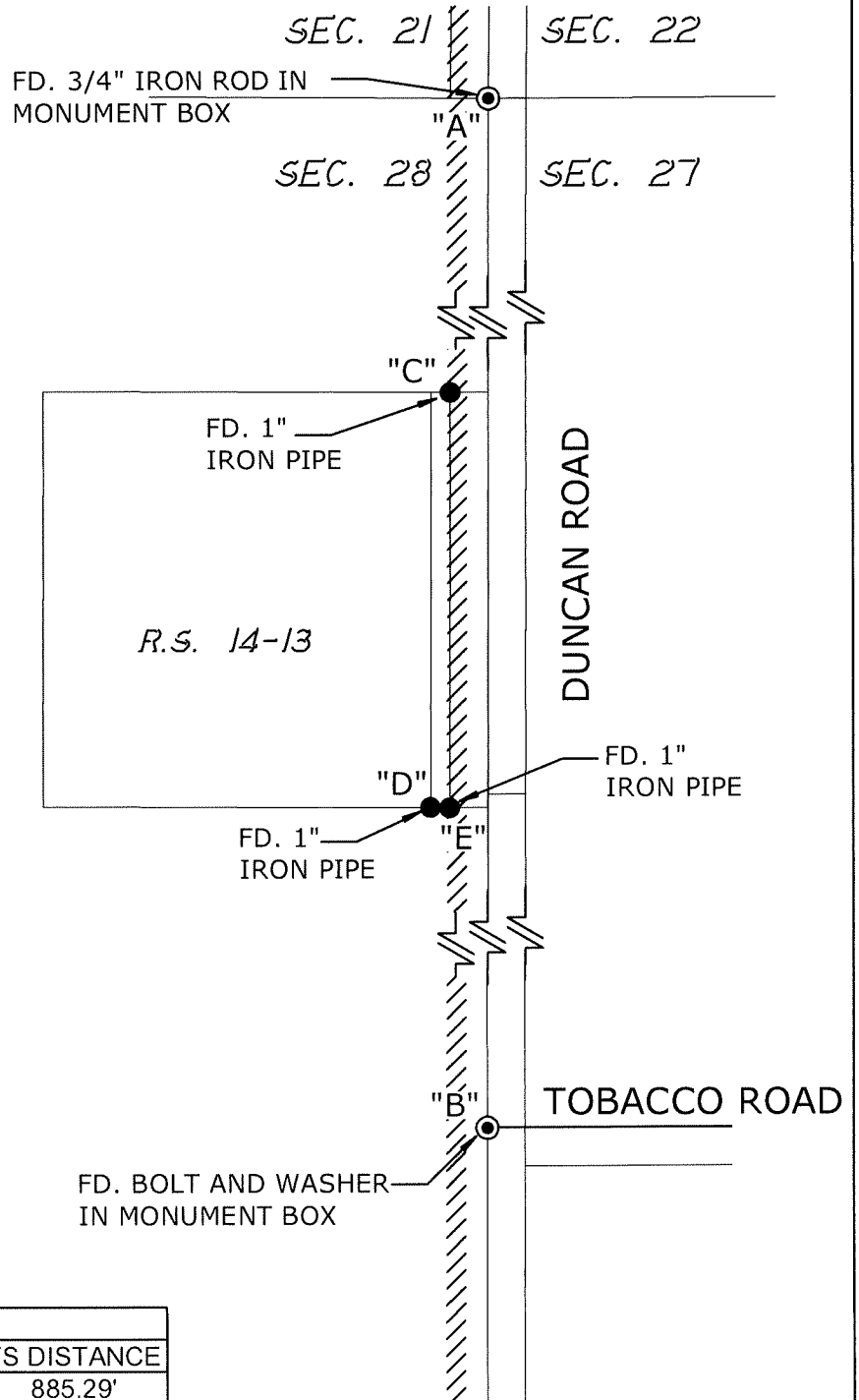
- R.S. RECORD OF SURVEY, BOOK AND PAGE, SAN JOAQUIN COUNTY RECORDS
- SEC. SECTION
- FD FOUND
- FOUND MONUMENT AS NOTED PER CORNER RECORD 24-384, SAN JOAQUIN COUNTY SURVEYOR'S RECORDS
- ⊙ FOUND MONUMENT IN MONUMENT WELL AS NOTED PER CORNER RECORD 24-384, SAN JOAQUIN COUNTY SURVEYOR'S RECORDS



LIMITS OF CONSTRUCTION AREA

**DESCRIPTION:**

THIS CORNER RECORD IS FOR THE PURPOSE OF MONUMENT PRESERVATION. REFERENCES WERE SET FOR FOUND MONUMENTS AS NOTED ON DIAGRAM. NO BOUNDARY ANALYSIS WAS PERFORMED. THIS CORNER RECORD DOES NOT VERIFY THE MONUMENT(S) TO BE IN THE CORRECT POSITION.



NOT TO SCALE

ANGLE AND DISTANCE TABLE

BS-O-FS	ANGLE	BS DISTANCE	FS DISTANCE
A-C-B	176°06'40"	439.51'	885.29'
A-D-B	174°47'09"	659.63'	665.87'
A-E-B	176°31'45"	659.50'	664.98'