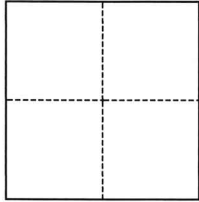


CORNER RECORD

Agency Index CR-25-200
Document Number _____

City of _____ County of San Joaquin, California
Brief Legal Description A Portion of the S.E. 1/4 Section 21, T.2 N., R.8 E.

CORNER TYPE



☐ Government Corner ☐ Control
☐ Meander ☒ Property
☐ Rancho ☐ Other

Date of Survey May 6, 2025

COORDINATES (Optional)

N. _____ E. _____
Elevation _____
Units ☐ Metric ☐ U.S. Survey Foot
Horizontal Datum _____
Zone _____ Epoch Date _____
Vertical Datum _____
☐ Complies with Public Resources Code §§8801-8819
☐ Complies with Public Resources Code §§8890-8902

PLS Act Ref.: ☐ 8765(d) ☒ 8771 ☐ 8773 ☐ Other:
Corner/
Monument: ☒ Left as found ☐ Established ☐ Rebuilt ☐ Pre-Construction
☐ Found and tagged ☐ Reestablished ☒ Referenced ☒ Post-Construction

Narrative of corner identified and monument as found, set, reset, replaced, or removed:

☒ See sheet #2 for description(s):

SURVEYOR'S STATEMENT

This Corner Record was prepared by me or under my direction in conformance with

the Professional Land Surveyors' Act on May 6, 2025

Signed [Signature] P.L.S. or R.C.E. No. PLS 7889



COUNTY SURVEYOR'S STATEMENT

This Corner Record was received May 30, 2025

and examined and filed June 5, 2025

Signed James E. Hart P.L.S. or R.C.E. No. 8657

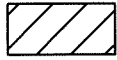
Title County Surveyor

County Surveyor's Comment



LEGEND:

- R.S. RECORD OF SURVEY, BOOK AND PAGE, SAN JOAQUIN COUNTY RECORDS
- SEC. SECTION
- FD FOUND
- FOUND MONUMENT AS NOTED PER CORNER RECORD 24-382, SAN JOAQUIN COUNTY SURVEYOR'S RECORDS
- ⊙ FOUND MONUMENT IN MONUMENT WELL AS NOTED PER CORNER RECORD 24-382, SAN JOAQUIN COUNTY SURVEYOR'S RECORDS



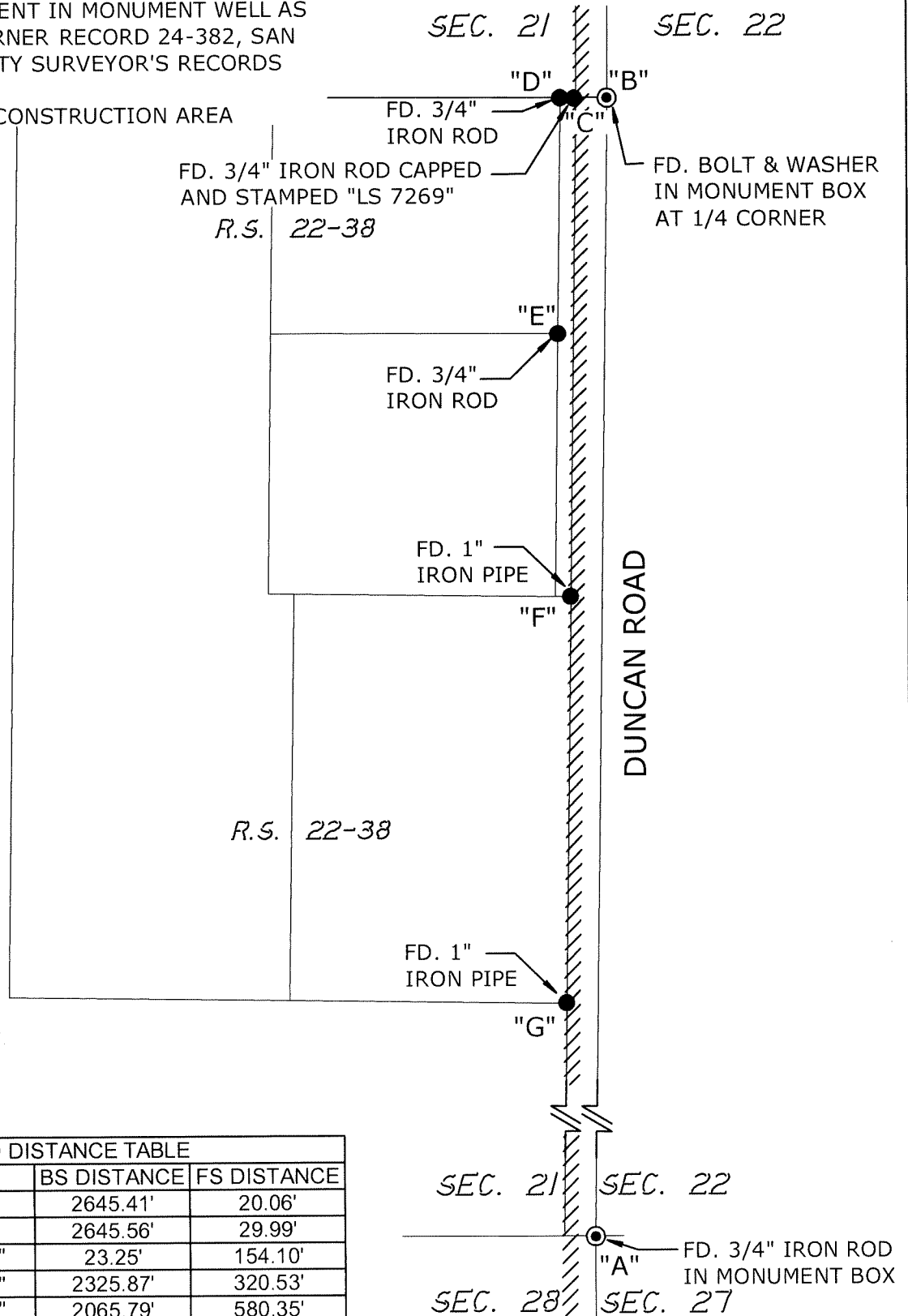
LIMITS OF CONSTRUCTION AREA

DESCRIPTION:

THIS CORNER RECORD IS FOR THE PURPOSE OF MONUMENT PRESERVATION. REFERENCES WERE SET FOR FOUND MONUMENTS AS NOTED ON DIAGRAM. NO BOUNDARY ANALYSIS WAS PERFORMED. THIS CORNER RECORD DOES NOT VERIFY THE MONUMENT(S) TO BE IN THE CORRECT POSITION.



NOT TO SCALE



ANGLE AND DISTANCE TABLE

BS-O-FS	ANGLE	BS DISTANCE	FS DISTANCE
A-C-B	90°35'46"	2645.41'	20.06'
A-D-B	89°55'57"	2645.56'	29.99'
A-E-B	168°09'35"	23.25'	154.10'
A-F-B	175°55'53"	2325.87'	320.53'
A-G-B	177°27'33"	2065.79'	580.35'