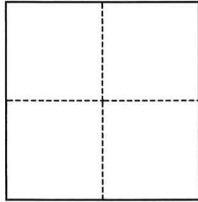


# CORNER RECORD

Agency Index CR-25-197  
Document Number \_\_\_\_\_

City of Stockton County of San Joaquin, California  
Brief Legal Description Lots 9, 10, 11, M.&P. 19-33

## CORNER TYPE



- ☐ Government Corner ☐ Control  
☐ Meander ☒ Property  
☐ Rancho ☐ Other

Date of Survey May 6, 2025

## COORDINATES (Optional)

N. \_\_\_\_\_ E. \_\_\_\_\_  
Elevation \_\_\_\_\_  
Units ☐ Metric ☐ U.S. Survey Foot  
Horizontal Datum \_\_\_\_\_  
Zone \_\_\_\_\_ Epoch Date \_\_\_\_\_  
Vertical Datum \_\_\_\_\_  
☐ Complies with Public Resources Code §§8801-8819  
☐ Complies with Public Resources Code §§8890-8902

PLS Act Ref.: ☐ 8765(d) ☒ 8771 ☐ 8773 ☐ Other:  
Corner/  
Monument: ☒ Left as found ☐ Established ☐ Rebuilt ☐ Pre-Construction  
☐ Found and tagged ☐ Reestablished ☒ Referenced ☒ Post-Construction

Narrative of corner identified and monument as found, set, reset, replaced, or removed:  
☒ See sheet #2 for description(s):

## SURVEYOR'S STATEMENT

This Corner Record was prepared by me or under my direction in conformance with  
the Professional Land Surveyors' Act on May 6, 2025

Signed [Signature] P.L.S. or R.C.E. No. PLS 7889



## COUNTY SURVEYOR'S STATEMENT

This Corner Record was received May 30, 2025  
and examined and filed June 5, 2025

Signed James E. Hart P.L.S. or R.C.E. No. 8657  
Title County Surveyor

County Surveyor's Comment \_\_\_\_\_

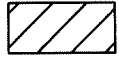


LEGEND:

M.&P. MAPS AND PLATS, BOOK AND PAGE, SAN JOAQUIN COUNTY RECORDS

- FOUND 3/4" IRON ROD, NO TAG PER CORNER RECORD 24-362, SAN JOAQUIN COUNTY SURVEYOR'S RECORDS

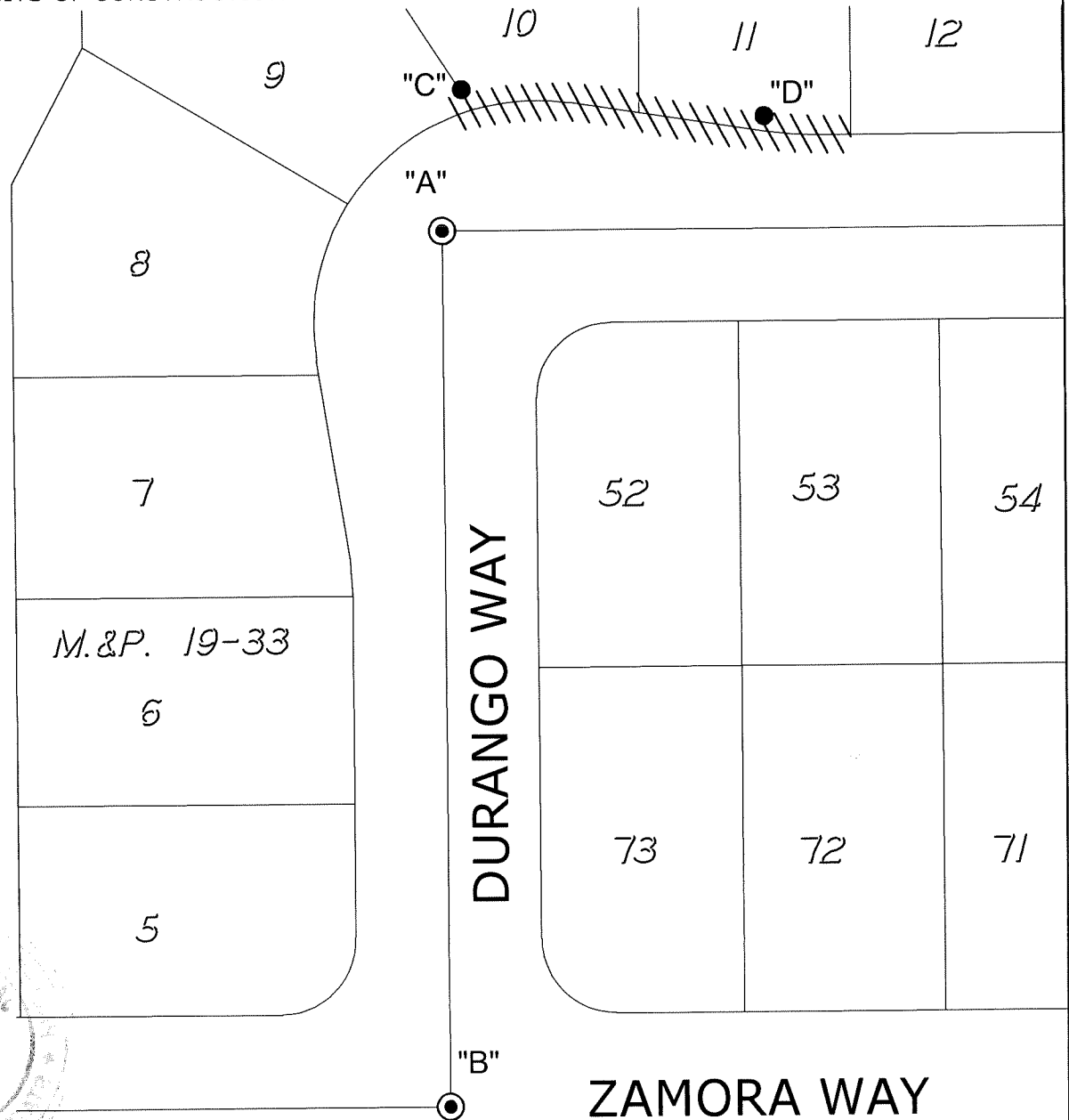
- ⊙ FOUND 3/4" IRON PIPE IN MONUMENT WELL, NO TAG



LIMITS OF CONSTRUCTION AREA

DESCRIPTION:

THIS CORNER RECORD IS FOR THE PURPOSE OF MONUMENT PRESERVATION. REFERENCES WERE SET FOR FOUND MONUMENTS AS NOTED ON DIAGRAM. NO BOUNDARY ANALYSIS WAS PERFORMED. THIS CORNER RECORD DOES NOT VERIFY THE MONUMENT(S) TO BE IN THE CORRECT POSITION.



DURANGO WAY

ZAMORA WAY

ANGLE AND DISTANCE TABLE

BS-O-FS	ANGLE	BS DISTANCE	FS DISTANCE
A-C-B	007°13'41"	38.34'	274.04'
A-D-B	052°46'43"	92.26'	280.14'

NOT TO SCALE