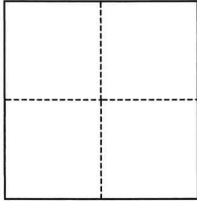


CORNER RECORD

Agency Index

CR-25-196

Document Number

City of _____ County of San Joaquin, CaliforniaBrief Legal Description Lots 3, 4, M&P 19-27**CORNER TYPE****COORDINATES (Optional)**

- ☐ Government Corner ☐ Control
☐ Meander ☒ Property
☐ Rancho ☐ Other

Date of Survey May 1, 2025

N. _____ E. _____

Elevation _____

Units ☐ Metric ☐ U.S. Survey Foot

Horizontal Datum _____

Zone _____ Epoch Date _____

Vertical Datum _____

☐ Complies with Public Resources Code §§8801-8819☐ Complies with Public Resources Code §§8890-8902

PLS Act Ref.:

☐ 8765(d)☒ 8771☐ 8773☐ Other:Corner/
Monument:☒ Left as found☐ Established☐ Rebuilt☐ Pre-Construction☐ Found and tagged☐ Reestablished☒ Referenced☒ Post-Construction

Narrative of corner identified and monument as found, set, reset, replaced, or removed:

☒ See sheet #2 for description(s):**SURVEYOR'S STATEMENT**

This Corner Record was prepared by me or under my direction in conformance with

the Professional Land Surveyors' Act on May 2, 2025Signed [Signature] P.L.S. or R.C.E. No. PLS 7889**COUNTY SURVEYOR'S STATEMENT**

This Corner Record was received

May 30, 2025

and examined and filed

June 5, 2025

Signed

James E. Hart

P.L.S. or R.C.E. No.

8657

Title

County Surveyor

County Surveyor's Comment

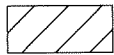


LEGEND:

M&P MAPS & PLATS, VOLUME AND PAGE, SAN JOAQUIN COUNTY RECORDS

● FOUND CHISELED CROSS PER CORNER RECORD 24-506, SAN JOAQUIN COUNTY SURVEYOR'S RECORDS

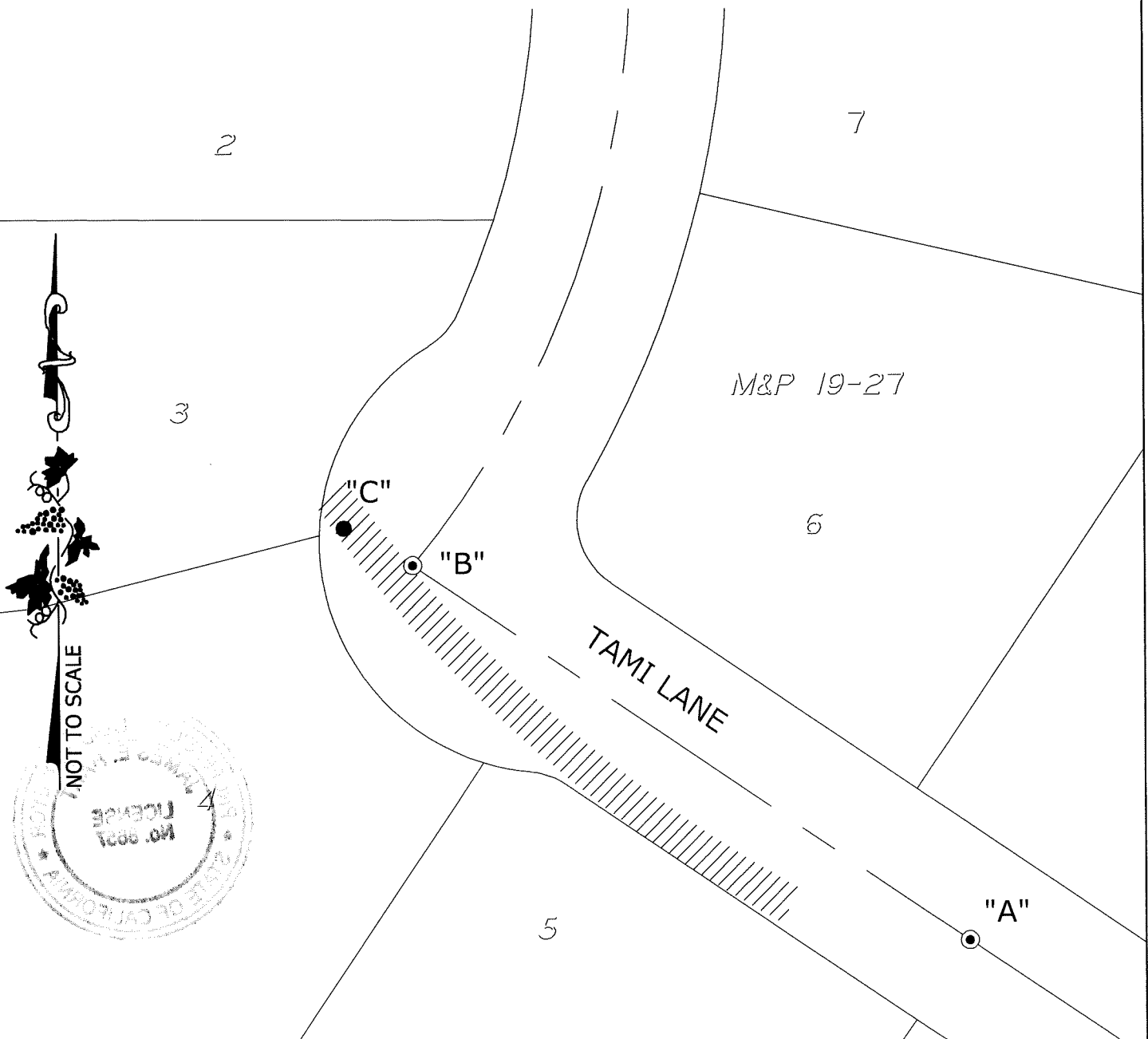
⊙ FOUND 3/4" IRON PIPE TAGGED "R.C.E. 15831" IN MONUMENT BOX



LIMITS OF CONSTRUCTION AREA

DESCRIPTION:

THIS CORNER RECORD IS FOR THE PURPOSE OF MONUMENT PRESERVATION. REFERENCES WERE FOUND AND/OR SET FOR FOUND MONUMENTS AS NOTED ON DIAGRAM. NO BOUNDARY ANALYSIS WAS PERFORMED. THIS CORNER RECORD DOES NOT VERIFY THE MONUMENT(S) TO BE IN THE CORRECT POSITION.



ANGLE AND DISTANCE TABLE

BS-O-FS	ANGLE	BS DISTANCE	FS DISTANCE
A-C-B	005°09'40"	194.96'	20.30'