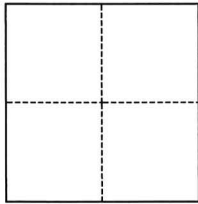


CORNER RECORD

Agency Index CR-25-193
Document Number _____

City of Stockton County of San Joaquin, California
Brief Legal Description Lots 4, 5, 6, 7, 23, 24, M&P 22-10

CORNER TYPE



- ☐ Government Corner ☐ Control
☐ Meander ☒ Property
☐ Rancho ☐ Other

Date of Survey May 1, 2025

COORDINATES (Optional)

N. _____ E. _____
Elevation _____
Units ☐ Metric ☐ U.S. Survey Foot
Horizontal Datum _____
Zone _____ Epoch Date _____
Vertical Datum _____
☐ Complies with Public Resources Code §§8801-8819
☐ Complies with Public Resources Code §§8890-8902

PLS Act Ref.: ☐ 8765(d) ☒ 8771 ☐ 8773 ☐ Other:
Corner/
Monument: ☒ Left as found ☐ Established ☐ Rebuilt ☐ Pre-Construction
☐ Found and tagged ☐ Reestablished ☒ Referenced ☒ Post-Construction

Narrative of corner identified and monument as found, set, reset, replaced, or removed:

☒ See sheet #2 for description(s):

SURVEYOR'S STATEMENT

This Corner Record was prepared by me or under my direction in conformance with

the Professional Land Surveyors' Act on May 2, 2025

Signed [Signature] P.L.S. or R.C.E. No. PLS 7889



COUNTY SURVEYOR'S STATEMENT

This Corner Record was received May 30, 2025

and examined and filed June 5, 2025

Signed James E. Hart P.L.S. or R.C.E. No. 8657

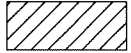
Title County Surveyor

County Surveyor's Comment



LEGEND:

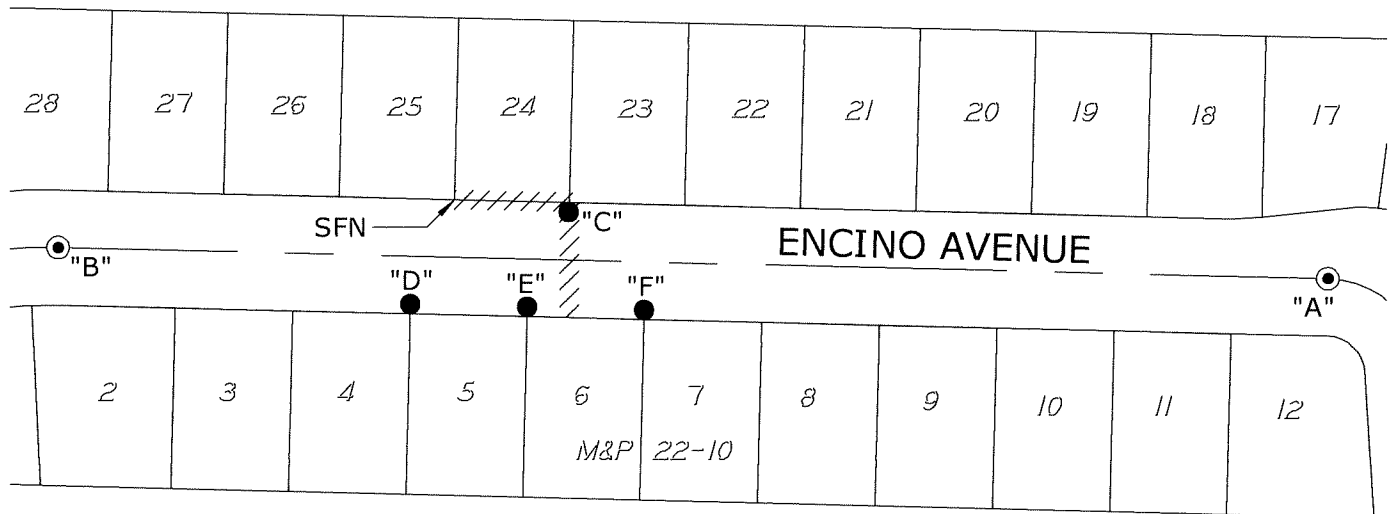
- M&P MAPS & PLATS, VOLUME AND PAGE, SAN JOAQUIN COUNTY RECORDS
- SFN SEARCH, FOUND NOTHING
- FOUND 3/4" IRON PIN IN MONUMENT BOX
- FOUND CHISELED CROSS PER CORNER RECORD 25-009, SAN JOAQUIN COUNTY SURVEYOR'S RECORDS



LIMITS OF CONSTRUCTION AREA

DESCRIPTION:

THIS CORNER RECORD IS FOR THE PURPOSE OF MONUMENT PRESERVATION. REFERENCES WERE FOUND AND/OR SET FOR FOUND MONUMENTS AS NOTED ON DIAGRAM. NO BOUNDARY ANALYSIS WAS PERFORMED. THIS CORNER RECORD DOES NOT VERIFY THE MONUMENT(S) TO BE IN THE CORRECT POSITION.



ANGLE AND DISTANCE TABLE

BS-O-FS	ANGLE	BS DISTANCE	FS DISTANCE
A-C-B	170°59'15"	395.89'	266.10'
A-D-B	169°15'12"	477.31'	185.06'
A-E-B	170°43'21"	416.40'	245.65'
A-F-B	171°18'26"	355.54'	306.39'

