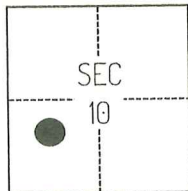


CORNER RECORD

Agency Index

CR-25-186

Document Number

City of STOCKTON County of SAN JOAQUIN, CaliforniaBrief Legal Description FOUND CHISELED CROSS BETWEEN LOTS 12 AND 13, PER CR 24-279, SAN JOAQUIN COUNTY SURVEYOR'S RECORDS.**CORNER TYPE****COORDINATES (Optional)**

CM WEBER GRANT

- ☐ Government Corner ☐ Control
☐ Meander ☒ Property
☐ Rancho ☐ Other

Date of Survey February 22, 2024

N. _____ E. _____

Elevation _____

Units ☐ Metric ☒ U.S. Survey Foot

Horizontal Datum _____

Zone _____ Epoch Date _____

Vertical Datum _____

☐ Complies with Public Resources Code §§8801-8819☐ Complies with Public Resources Code §§8890-8902

PLS Act Ref.:

☐ 8765(d)☒ 8771☐ 8773☐ Other:Corner/
Monument:☒ Left as found☐ Established☐ Rebuilt☐ Pre-Construction☐ Found and tagged☐ Reestablished☒ Referenced☒ Post-Construction

Narrative of corner identified and monument as found, set, reset, replaced, or removed:

☒ See sheet #2 for description(s):

THE FOUND MONUMENT(S) SHOWN ON THIS CORNER RECORD WERE FOUND AT THE LOCATION OF THE CORNER(S) ON CR 24-279, SAN JOAQUIN COUNTY SURVEYOR'S RECORDS. I DID NOT VERIFY THE IDENTITY AND VALIDITY OF THE MONUMENT FOUND AS ACTUALLY MARKING THE PROPERTY CORNER.

SURVEYOR'S STATEMENT

This Corner Record was prepared by me or under my direction in conformance with

the Professional Land Surveyors' Act on October 8, 2024

Signed

P.L.S. or R.C.E. No.

8489**COUNTY SURVEYOR'S STATEMENT**

This Corner Record was received

May 23, 2025

and examined and filed

June 3, 2025

Signed

P.L.S. or R.C.E. No.

8657

Title

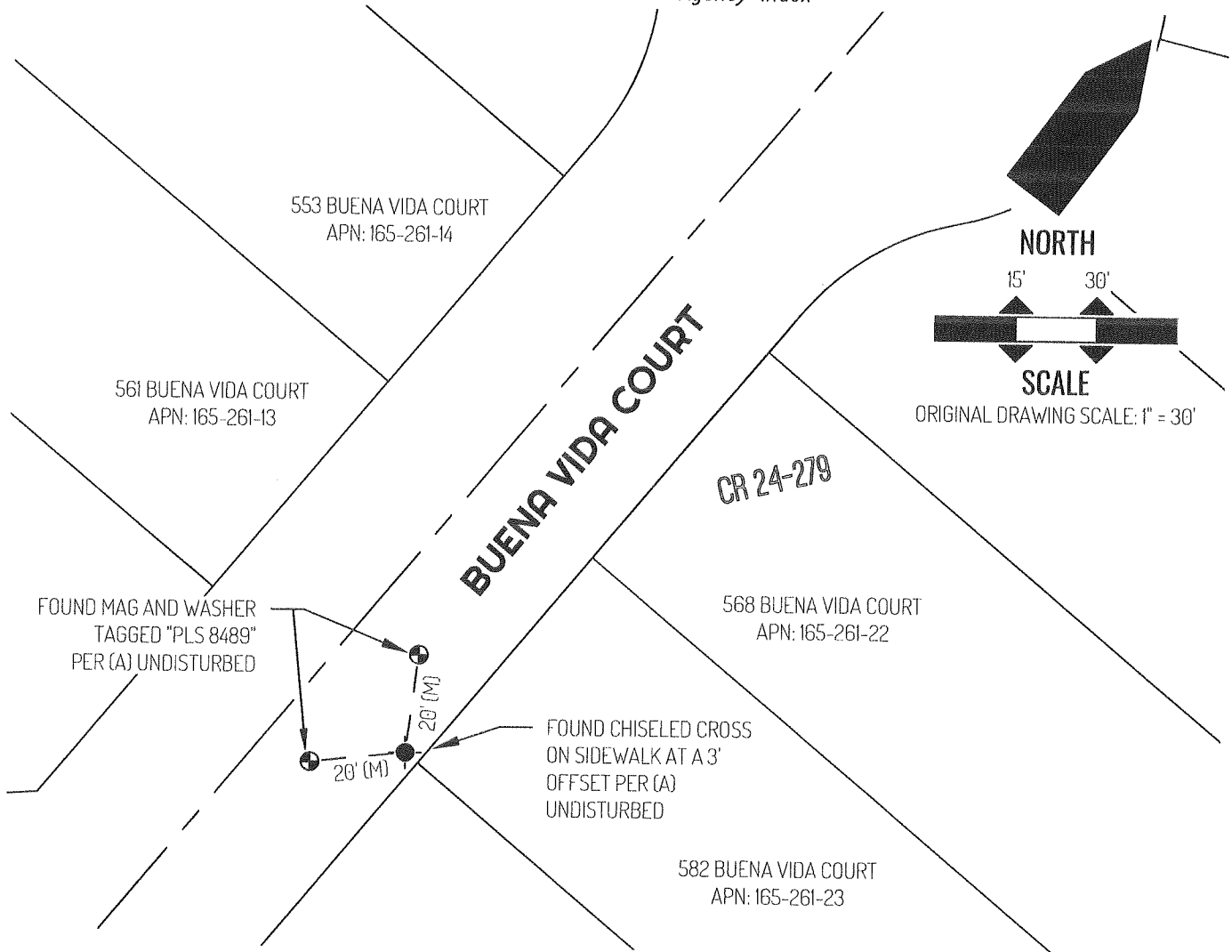
County Surveyor

County Surveyor's Comment



Document Number

Agency Index



LEGEND

	FOUND CHISELED CROSS AS NOTED
	FOUND CONTROL POINT AS NOTED
582	REFERENCE STREET ADDRESS
CR	CORNER RECORD, SAN JOAQUIN COUNTY SURVEYOR'S RECORDS
APN	TAX ASSESSOR PARCEL NUMBER
(M)	MEASURED
---	TIE LINE
==	LOT LINE
---	RIGHT-OF-WAY CENTERLINE

REFERENCE

(A) CORNER RECORD 24-279, SAN JOAQUIN COUNTY SURVEYOR'S RECORDS