

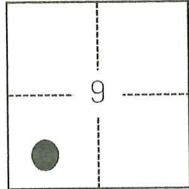
CORNER RECORD

Agency Index CR-25-183
Document Number _____

City of STOCKTON County of SAN JOAQUIN, California
Brief Legal Description FOUND MONUMENTS SHOWN ON MP 31-23, SAN JOAQUIN COUNTY RECORDS AND CORNER RECORD 24-312, SAN JOAQUIN COUNTY SURVEYOR'S RECORDS.

CORNER TYPE

COORDINATES (Optional)



C.M. WEBER GRANT

- ☐ Government Corner ☐ Control
☐ Meander ☒ Property
☐ Rancho ☐ Other

Date of Survey May 4, 2023

N. _____ E. _____

Elevation _____

Units ☐ Metric ☒ U.S. Survey Foot

Horizontal Datum _____

Zone _____ Epoch Date _____

Vertical Datum _____

☐ Complies with Public Resources Code §§8801-8819

☐ Complies with Public Resources Code §§8890-8902

PLS Act Ref.: ☐ 8765(d) ☒ 8771 ☐ 8773 ☐ Other:
Corner/Monument: ☒ Left as found ☐ Established ☐ Rebuilt ☒ Pre-Construction
☐ Found and tagged ☐ Reestablished ☒ Referenced ☐ Post-Construction

Narrative of corner identified and monument as found, set, reset, replaced, or removed:

☒ See sheet #2 for description(s):

THE FOUND MONUMENT(S) SHOWN ON THIS CORNER RECORD WERE FOUND IN THE APPROXIMATE LOCATION OF THE CORNER(S) ON MP 31-23, SAN JOAQUIN COUNTY RECORDS AND CORNER RECORD 24-312, SAN JOAQUIN COUNTY SURVEYOR'S RECORDS. I DID NOT VERIFY THE IDENTITY AND VALIDITY OF THE MONUMENT(S) FOUND AS ACTUALLY MARKING THE PROPERTY CORNER.

SURVEYOR'S STATEMENT

This Corner Record was prepared by me or under my direction in conformance with

the Professional Land Surveyors' Act on July 24, 2024

Signed [Signature] P.L.S. or R.C.E. No. 8489



COUNTY SURVEYOR'S STATEMENT

This Corner Record was received May 23, 2025

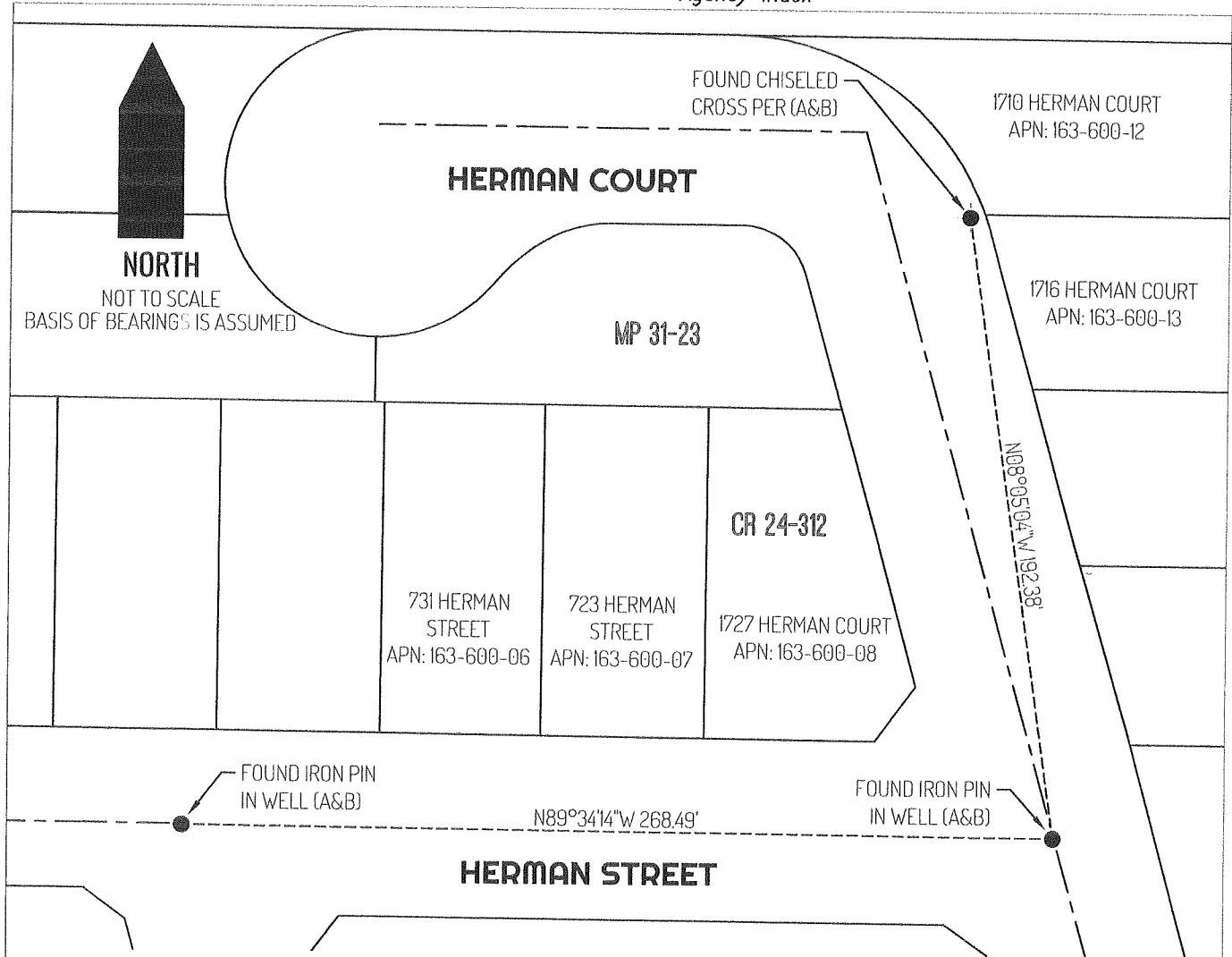
and examined and filed June 3, 2025

Signed James E. Hart P.L.S. or R.C.E. No. 8657

Title County Surveyor

County Surveyor's Comment



**LEGEND**

●
●
1710
MP
APN
CR

FOUND MONUMENT AS NOTED
FOUND CHISELED CROSS
REFERENCE STREET ADDRESS
MAPS & PLATS, SAN JOAQUIN COUNTY RECORDS
TAX ASSESSOR PARCEL NUMBER
CORNER RECORD, SAN JOAQUIN COUNTY
SURVEYOR'S RECORDS
TIE LINE
LOT LINE
RIGHT-OF-WAY CENTERLINE

SURVEYOR NOTE

THIS CORNER RECORD IS BEING FILED TO FULFILL THE PRE-CONSTRUCTION MONUMENT PRESERVATION REQUIREMENTS OF SECTION 8771 OF THE CALIFORNIA BUSINESS AND PROFESSIONS CODE. IT IS NOT THE RESULT OF A FULLY RESOLVED BOUNDARY SURVEY FOR ANY PARCEL OF REAL PROPERTY.

REFERENCE(S)

- (A) MAPS & PLATS BOOK 31 AT PAGE 23, SAN JOAQUIN COUNTY RECORDS
(B) CORNER RECORD 24-312, SAN JOAQUIN COUNTY SURVEYOR'S RECORDS