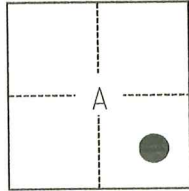


# CORNER RECORD

Agency Index

CR-25-182

Document Number

City of STOCKTON County of SAN JOAQUIN, CaliforniaBrief Legal Description FOUND MONUMENTS ALONG THE CENTERLINE AND RIGHT-OF-WAY LINE OF GRIFFIN POINT PER CORNER RECORD 24-414, SAN JOAQUIN COUNTY SURVEYOR'S RECORDS.**CORNER TYPE****COORDINATES (Optional)**

C.M. WEBER GRANT

- ☐ Government Corner ☐ Control  
☐ Meander ☒ Property  
☐ Rancho ☐ Other

Date of Survey February 22, 2024

N. \_\_\_\_\_ E. \_\_\_\_\_

Elevation \_\_\_\_\_

Units ☐ Metric ☒ U.S. Survey Foot

Horizontal Datum \_\_\_\_\_

Zone \_\_\_\_\_ Epoch Date \_\_\_\_\_

Vertical Datum \_\_\_\_\_

☐ Complies with Public Resources Code §§8801-8819☐ Complies with Public Resources Code §§8890-8902

PLS Act Ref.:

☐ 8765(d)☒ 8771☐ 8773☐ Other:Corner/  
Monument:☒ Left as found☐ Established☐ Rebuilt☐ Pre-Construction☐ Found and tagged☒ Reestablished☒ Referenced☒ Post-Construction

Narrative of corner identified and monument as found, set, reset, replaced, or removed:

☒ See sheet #2 for description(s):

THE MONUMENT(S) SHOWN ON THIS CORNER RECORD WERE RESET AT THE LOCATION OF THE CORNER(S) ON CORNER RECORD 24-414, SAN JOAQUIN COUNTY SURVEYOR'S RECORDS. I DID NOT VERIFY THE IDENTITY AND VALIDITY OF THE MONUMENT(S) FOUND AS ACTUALLY MARKING THE PROPERTY CORNER.

**SURVEYOR'S STATEMENT**

This Corner Record was prepared by me or under my direction in conformance with

the Professional Land Surveyors' Act on April 2, 2025Signed Scott L. Blake P.L.S. or R.C.E. No. 8489**COUNTY SURVEYOR'S STATEMENT**

This Corner Record was received

May 19, 2025

and examined and filed

June 3, 2025

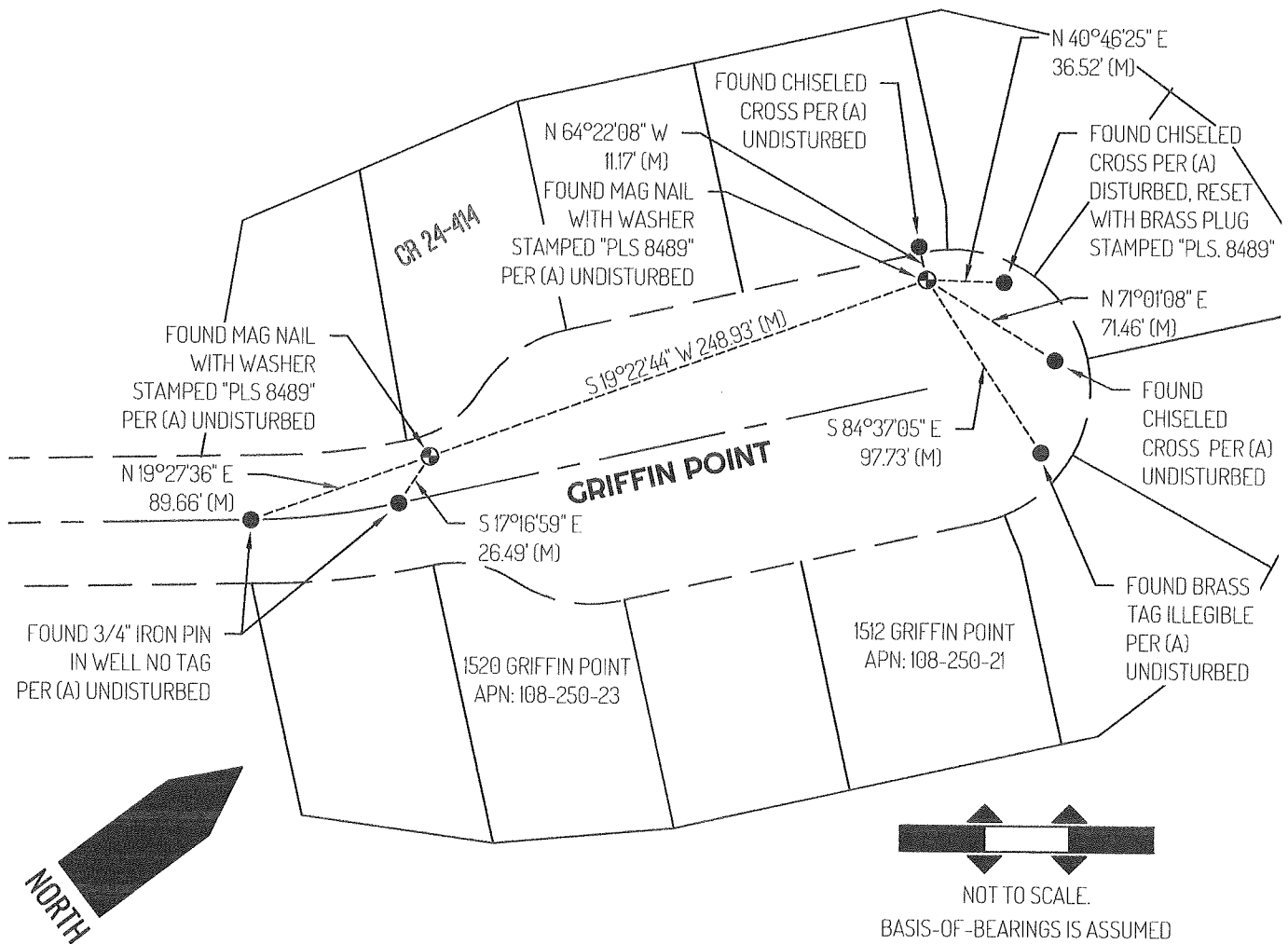
Signed

James E. Hart  
County SurveyorP.L.S. or R.C.E. No. 8657

Title

County Surveyor's Comment





## LEGEND

●	FOUND MONUMENT AS NOTED
⊕	FOUND CONTROL POINT AS NOTED
1520	REFERENCE STREET ADDRESS
APN	TAX ASSESSOR PARCEL NUMBER
CR	CORNER RECORDS, SAN JOAQUIN COUNTY
	SURVEYOR'S RECORDS
(M)	MEASURED
-----	TIE LINE
=====	LOT LINE
-----	RIGHT-OF-WAY SIDELINE
-----	RIGHT-OF-WAY CENTERLINE

## REFERENCE

(A) CORNER RECORD 24-414, SAN JOAQUIN COUNTY SURVEYOR'S RECORDS