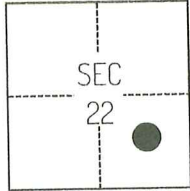


CORNER RECORD

Agency Index

CR-25-181

Document Number

City of STOCKTON County of SAN JOAQUIN, CaliforniaBrief Legal Description FOUND MONUMENTS SHOWN ON CR-24-221, SAN JOAQUIN COUNTY SURVEYOR'S RECORDS.**CORNER TYPE****COORDINATES (Optional)**

C.M. WEBER GRANT

- ☐ Government Corner ☐ Control
☐ Meander ☒ Property
☐ Rancho ☐ Other

Date of Survey February 15, 2023

N. _____ E. _____

Elevation _____

Units ☐ Metric ☒ U.S. Survey Foot

Horizontal Datum _____

Zone _____ Epoch Date _____

Vertical Datum _____

☐ Complies with Public Resources Code §§8801-8819☐ Complies with Public Resources Code §§8890-8902

PLS Act Ref.:

☐ 8765(d)☒ 8771☐ 8773☐ Other:Corner/
Monument:☒ Left as found☐ Established☐ Rebuilt☐ Pre-Construction☐ Found and tagged☒ Reestablished☒ Referenced☒ Post-Construction

Narrative of corner identified and monument as found, set, reset, replaced, or removed:

☒ See sheet #2 for description(s):**SURVEYOR'S STATEMENT**

This Corner Record was prepared by me or under my direction in conformance with

the Professional Land Surveyors' Act on October 1, 2024

Signed

P.L.S. or R.C.E. No.

8489**COUNTY SURVEYOR'S STATEMENT**

This Corner Record was received

May 19, 2025

and examined and filed

June 3, 2025

Signed

P.L.S. or R.C.E. No.

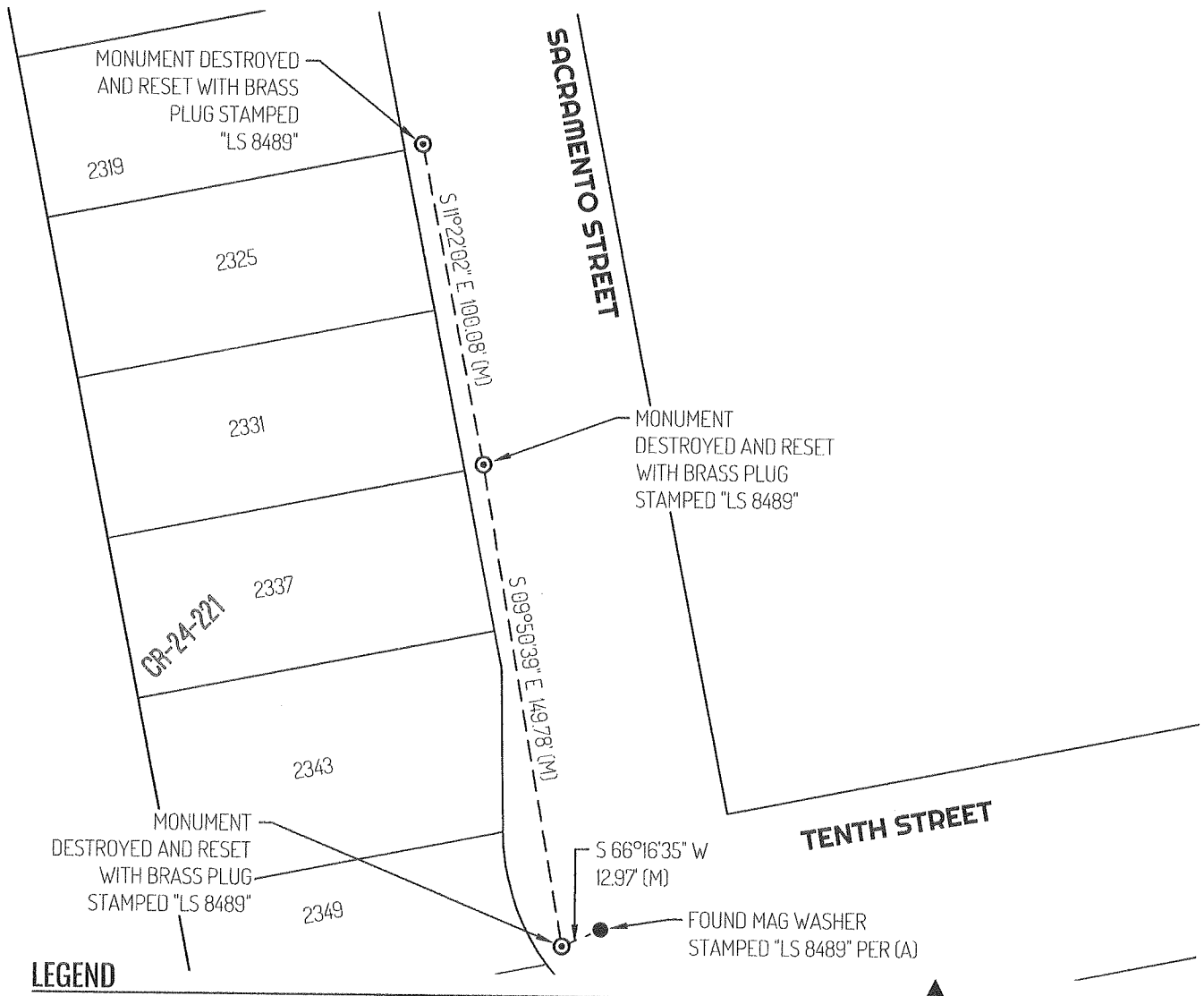
8657

Title

County Surveyor

County Surveyor's Comment



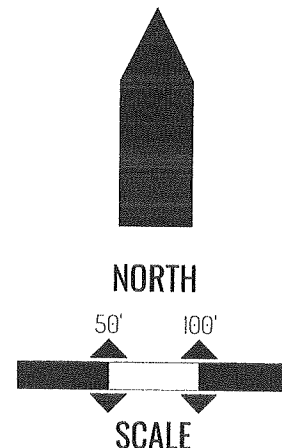


LEGEND

- ⊙ MONUMENT SET AS NOTED
- MONUMENT FOUND AS NOTED
- ⊕ FOUND CHISELED CROSS AS NOTED
- 2337 REFERENCE STREET ADDRESS
- CR CORNER RECORD, SAN JOAQUIN COUNTY SURVEYOR'S RECORDS
- (M) MEASURED
- TIE LINE
- LOT LINE

REFERENCE

- (A) CORNER RECORD 24-221, SAN JOAQUIN COUNTY SURVEYOR'S RECORDS



DRAWING SCALE: 1"=50'
BASIS OF BEARINGS IS ASSUMED