

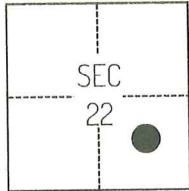
CORNER RECORD

Agency Index CR-25-177
Document Number _____

City of STOCKTON County of SAN JOAQUIN, California
Brief Legal Description FOUND MONUMENTS SHOWN ON CR-24-217, SAN JOAQUIN COUNTY SURVEYOR'S RECORDS.

CORNER TYPE

COORDINATES (Optional)



C.M. WEBER GRANT

- ☐ Government Corner ☐ Control
☐ Meander ☒ Property
☐ Rancho ☐ Other

Date of Survey February 15, 2023

N. _____ E. _____

Elevation _____

Units ☐ Metric ☒ U.S. Survey Foot

Horizontal Datum _____

Zone _____ Epoch Date _____

Vertical Datum _____

☐ Complies with Public Resources Code §§8801-8819

☐ Complies with Public Resources Code §§8890-8902

PLS Act Ref.: ☐ 8765(d) ☒ 8771 ☐ 8773 ☐ Other:

Corner/
Monument: ☒ Left as found ☐ Established ☐ Rebuilt ☐ Pre-Construction
☐ Found and tagged ☒ Reestablished ☒ Referenced ☒ Post-Construction

Narrative of corner identified and monument as found, set, reset, replaced, or removed:

☒ See sheet #2 for description(s):

SURVEYOR'S STATEMENT

This Corner Record was prepared by me or under my direction in conformance with

the Professional Land Surveyors' Act on October 1, 2024

Signed Scott L. Blake P.L.S. or R.C.E. No. 8489



COUNTY SURVEYOR'S STATEMENT

This Corner Record was received May 19, 2025

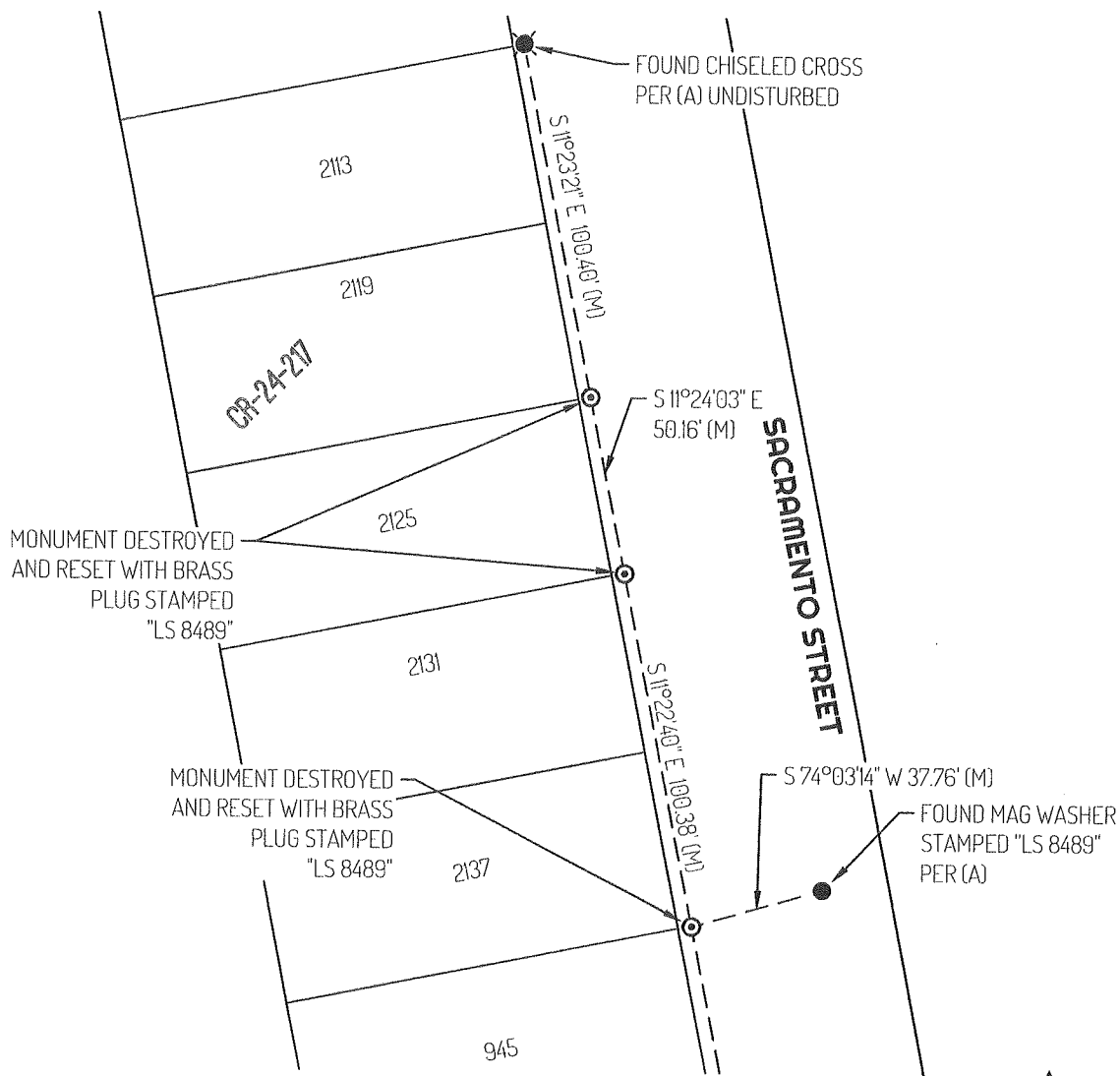
and examined and filed June 3, 2025

Signed James E. Hart P.L.S. or R.C.E. No. 8657

Title County Surveyor

County Surveyor's Comment





LEGEND

- ⊙ MONUMENT SET AS NOTED
- MONUMENT FOUND AS NOTED
- ⊕ FOUND CHISELED CROSS AS NOTED
- 2131 REFERENCE STREET ADDRESS
- CR CORNER RECORD, SAN JOAQUIN COUNTY SURVEYOR'S RECORDS
- (M) MEASURED
- - - - - TIE LINE
- LOT LINE

REFERENCE

- (A) CORNER RECORD 24-217, SAN JOAQUIN COUNTY SURVEYOR'S RECORDS

