

CORNER RECORD

Agency Index

CR-25-171

Document Number

City of UNINCORPRATED County of SAN JOAQUIN, California
Brief Legal Description PORTION LOT 6, 3M&P41, McCLEARY'S SUB., S.J.C. RECORDS

CORNER TYPE**COORDINATES (Optional)**

- ☐ Government Corner ☐ Control
☐ Meander ☒ Property
☐ Rancho ☐ Other

Date of Survey April 23, 2025

N. _____ E. _____

Elevation _____

Units ☐ Metric ☒ U.S. Survey Foot

Horizontal Datum _____

Zone _____ Epoch Date _____

Vertical Datum _____

☐ Complies with Public Resources Code §§8801-8819☐ Complies with Public Resources Code §§8890-8902

C.M. WEBER GRANT

PLS Act Ref.:

☐ 8765(d)☒ 8771☐ 8773☐ Other:Corner/
Monument:☒ Left as found☐ Established☐ Rebuilt☒ Pre-Construction☐ Found and tagged☐ Reestablished☒ Referenced☐ Post-Construction

Narrative of corner identified and monument as found, set, reset, replaced, or removed:

☒ See sheet #2 for description(s):

FOUND 5/8" REBAR, NO CAP, AT THE NORTHWEST CORNER OF THE ESTRELLA FAMILY PROPERTY AS SHOWN ON THAT RECORD OF SURVEY FILED IN BOOK 40 OF SURVEYS, PAGE 16, S.J.C. RECORDS.

SURVEYOR'S STATEMENT

This Corner Record was prepared by me or under my direction in conformance with

the Professional Land Surveyors' Act on April 28, 2025

Signed

(P.L.S. or R.C.E. No.

8474**COUNTY SURVEYOR'S STATEMENT**

This Corner Record was received

May 19, 2025

and examined and filed

June 3, 2025

Signed

P.L.S. or R.C.E. No.

8657

Title

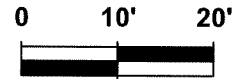
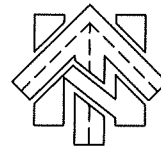
County Surveyor

County Surveyor's Comment



NOTE:

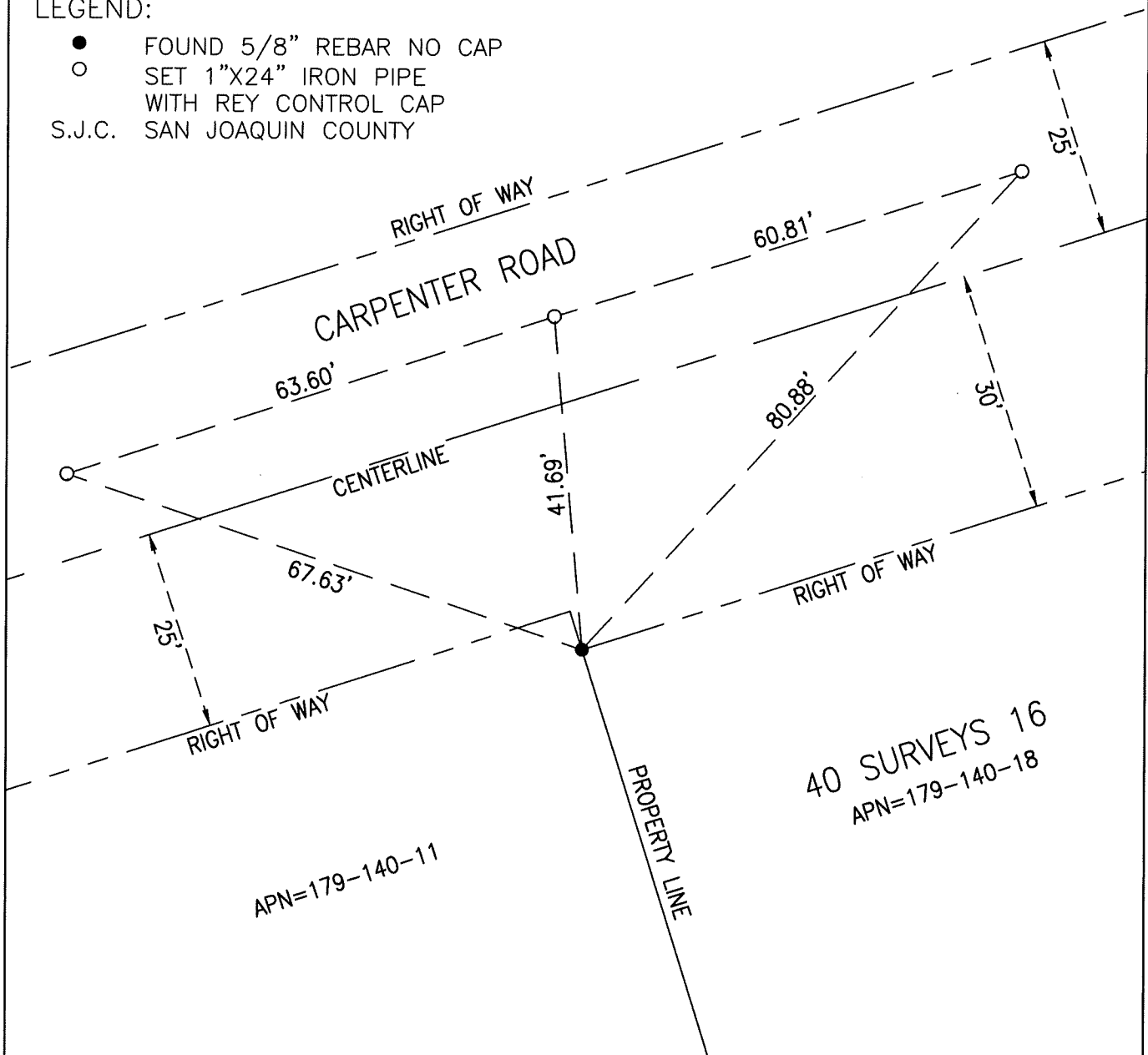
1. THE PURPOSE OF THIS CORNER RECORD IS TO PERPETUATE THE POSITION(S) OF THE EXISTING MONUMENT(S). NO REPRESENTATION IS MADE TO ANY RELATIVE POSITION(S) OF SAID MONUMENT(S). ALL RIGHT OF WAY, PROPERTY LINES, CENTERLINES AND OTHERS ARE FOR GRAPHICAL REPRESENTATION ONLY.



SCALE IN FEET (1"=20')

LEGEND:

- FOUND 5/8" REBAR NO CAP
 - SET 1"X24" IRON PIPE WITH REY CONTROL CAP
- S.J.C. SAN JOAQUIN COUNTY



40 SURVEYS 16
APN=179-140-18

CORNER RECORD EXHIBIT MAP

R.E.Y. ENGINEERS, INC.

CIVIL ENGINEERS | LAND SURVEYORS | REMOTE SENSING
905 SUTTER ST., SUITE 200
FOLSOM, CA 95630
Phone: (916) 366-3040

