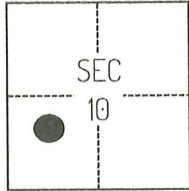


CORNER RECORD

Agency Index

CR-25-157

Document Number

City of STOCKTON County of SAN JOAQUIN, CaliforniaBrief Legal Description FOUND CHISELED CROSS BETWEEN LOTS 12 AND 13, PER M&P 29-8, SAN JOAQUIN COUNTY RECORDS.**CORNER TYPE****COORDINATES (Optional)**

CM WEBER GRANT

- ☐ Government Corner ☐ Control
☐ Meander ☒ Property
☐ Rancho ☐ Other

Date of Survey July 11, 2023

N. _____ E. _____

Elevation _____

Units ☐ Metric ☒ U.S. Survey Foot

Horizontal Datum _____

Zone _____ Epoch Date _____

Vertical Datum _____

☐ Complies with Public Resources Code §§8801-8819☐ Complies with Public Resources Code §§8890-8902

PLS Act Ref.:

☐ 8765(d)☒ 8771☐ 8773☐ Other:Corner/
Monument:☒ Left as found☐ Established☐ Rebuilt☒ Pre-Construction☐ Found and tagged☐ Reestablished☒ Referenced☐ Post-Construction

Narrative of corner identified and monument as found, set, reset, replaced, or removed:

☒ See sheet #2 for description(s):

THE FOUND MONUMENT(S) SHOWN ON THIS CORNER RECORD WERE FOUND IN THE APPROXIMATE RECORD LOCATION OF THE CORNER(S) ON M&P 29-8, SAN JOAQUIN COUNTY RECORDS. I DID NOT VERIFY THE IDENTITY OR VALIDITY OF THE MONUMENTS FOUND AS ACTUALLY MARKING THE PROPERTY CORNER.

SURVEYOR'S STATEMENT

This Corner Record was prepared by me or under my direction in conformance with

the Professional Land Surveyors' Act on September 19, 2024

Signed

P.L.S. or R.C.E. No.

8489**COUNTY SURVEYOR'S STATEMENT**

This Corner Record was received

May 6, 2025

and examined and filed

May 13, 2025

Signed

P.L.S. or R.C.E. No.

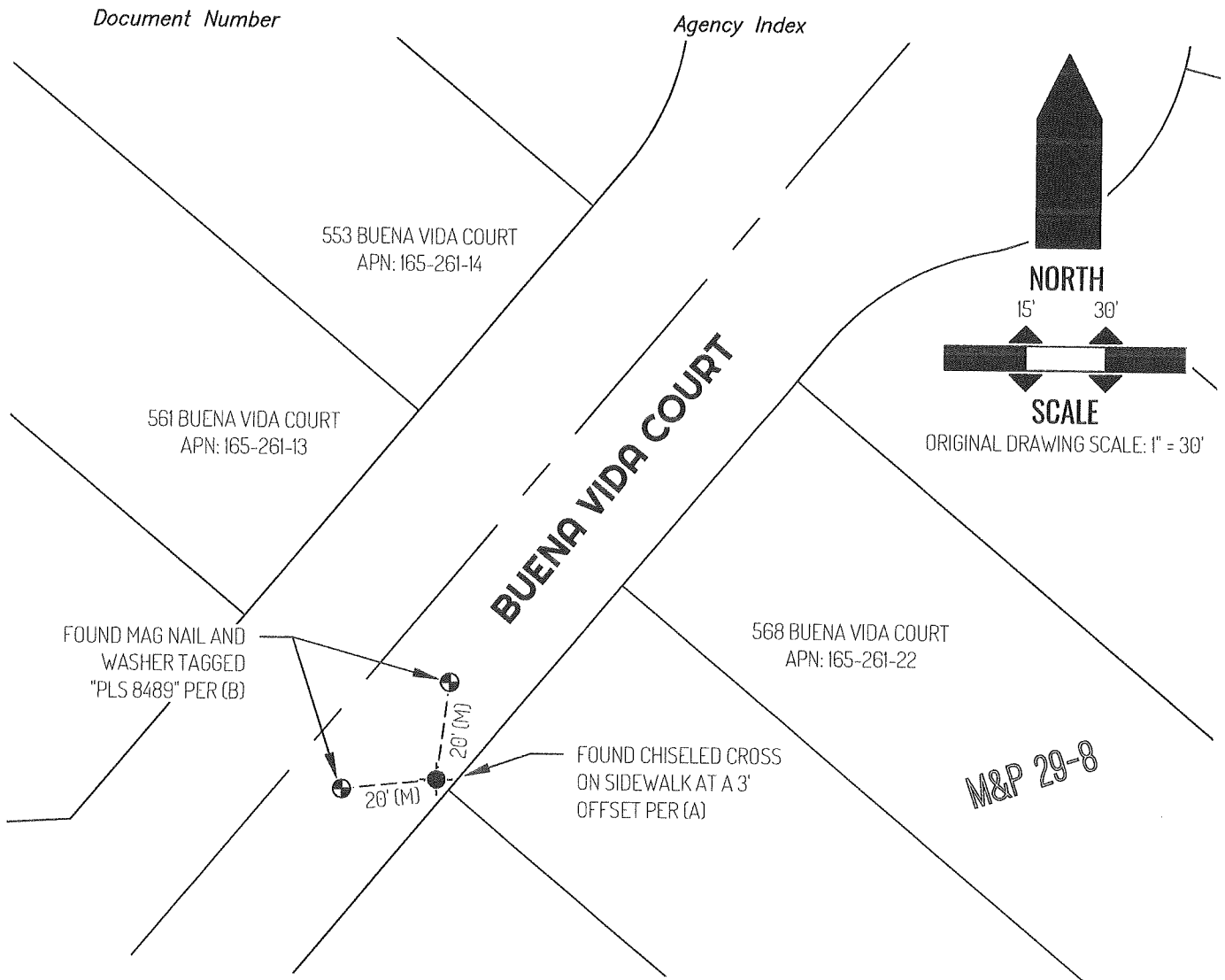
8657

Title

County Surveyor

County Surveyor's Comment





LEGEND

	FOUND CHISELED CROSS AS NOTED PER (A)
	FOUND CONTROL AS NOTED PER (B)
553	REFERENCE STREET ADDRESS
M&P	MAPS AND PLATS, SAN JOAQUIN COUNTY RECORDS
APN	TAX ASSESSOR PARCEL NUMBER
(M)	MEASURED
---	TIE LINE
---	LOT LINE
---	RIGHT-OF-WAY CENTERLINE

SURVEYOR NOTE

THIS CORNER RECORD IS BEING FILED TO FULFILL THE PRE-CONSTRUCTION MONUMENT PRESERVATION REQUIREMENTS OF SECTION 8771 OF THE CALIFORNIA BUSINESS AND PROFESSIONS CODE. IT IS NOT THE RESULT OF A FULLY RESOLVED BOUNDARY SURVEY FOR ANY PARCEL OF REAL PROPERTY.

REFERENCES

- (A) MAPS & PLATS BOOK 29, AT PAGE 8, SAN JOAQUIN COUNTY RECORDS
- (B) CORNER RECORD 24-279, SAN JOAQUIN COUNTY SURVEYOR'S RECORDS