

# CORNER RECORD

Agency Index

CR-25-155

Document Number

City of STOCKTON County of SAN JOAQUIN, CaliforniaBrief Legal Description FOUND MONUMENTS ON THOUSAND OAKS COURT.**CORNER TYPE****COORDINATES (Optional)**C.M. WEBER  
GRANT

- ☐ Government Corner ☐ Control  
☐ Meander ☒ Property  
☐ Rancho ☐ Other

Date of Survey July 11, 2023

N. \_\_\_\_\_ E. \_\_\_\_\_

Elevation \_\_\_\_\_

Units ☐ Metric ☒ U.S. Survey Foot

Horizontal Datum \_\_\_\_\_

Zone \_\_\_\_\_ Epoch Date \_\_\_\_\_

Vertical Datum \_\_\_\_\_

☐ Complies with Public Resources Code §§8801-8819☐ Complies with Public Resources Code §§8890-8902

PLS Act Ref.:

☐ 8765(d)☒ 8771☐ 8773☐ Other:Corner/  
Monument:☒ Left as found☐ Established☐ Rebuilt☒ Pre-Construction☐ Found and tagged☐ Reestablished☒ Referenced☐ Post-Construction

Narrative of corner identified and monument as found, set, reset, replaced, or removed:

☒ See sheet #2 for description(s):

THE FOUND MONUMENTS SHOWN ON THIS CORNER RECORD WERE FOUND EITHER IN THE APPROXIMATE LOCATION OF THE CORNER(S) ON CORNER RECORD 24-222, SAN JOAQUIN COUNTY SURVEYOR'S RECORDS OR NOT OF RECORD. I DID NOT VERIFY THE IDENTITY AND VALIDITY OF THE MONUMENT(S) FOUND AS ACTUALLY MARKING THE PROPERTY CORNER.

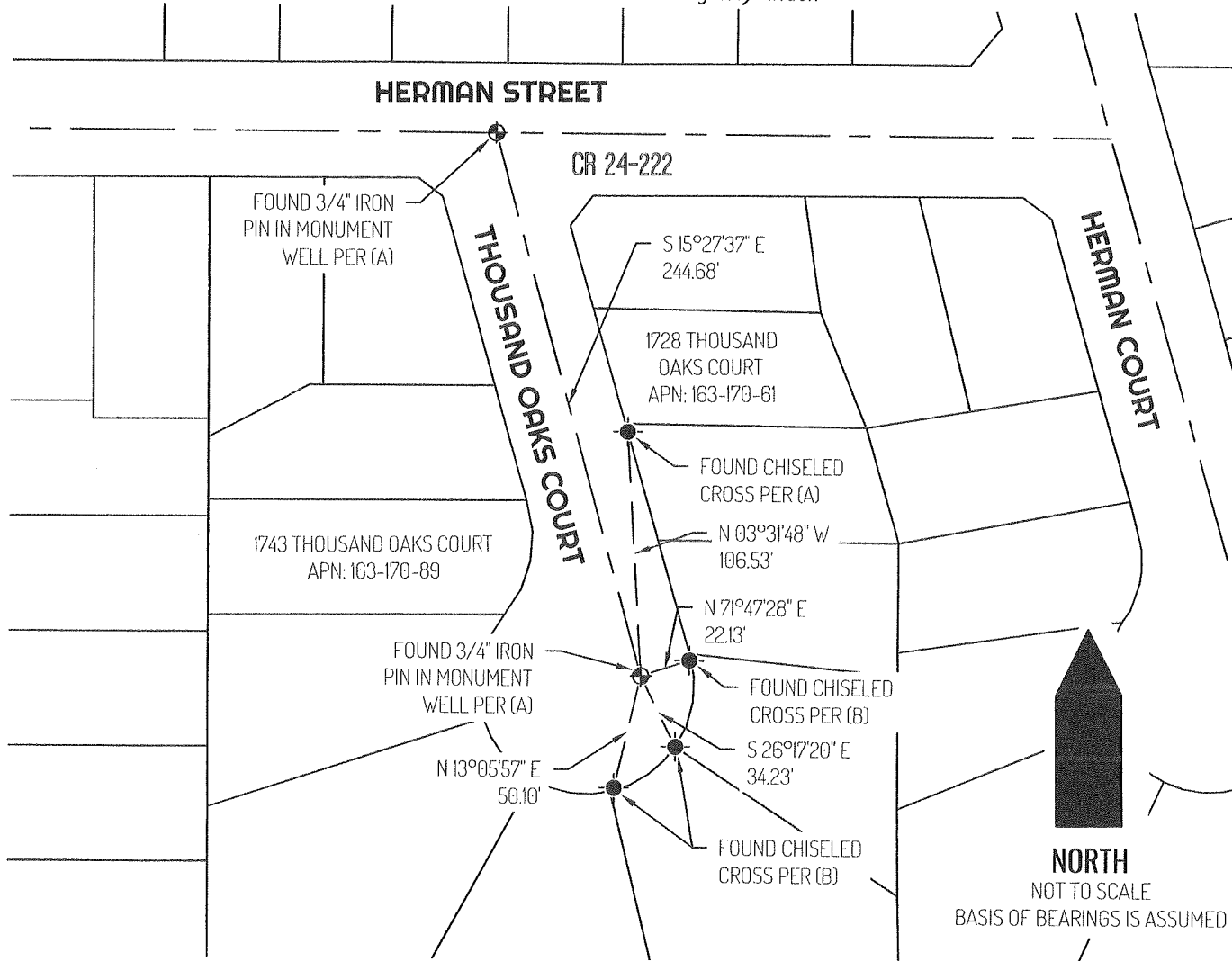
**SURVEYOR'S STATEMENT**

This Corner Record was prepared by me or under my direction in conformance with



the Professional Land Surveyors' Act on July 3, 2024Signed Scott L. Blake P.L.S. or R.C.E. No. 8489**COUNTY SURVEYOR'S STATEMENT**This Corner Record was received May 6, 2025and examined and filed May 13, 2025Signed James E. Hart P.L.S. or R.C.E. No. 8657Title County Surveyor

County Surveyor's Comment





## LEGEND

- |                                                                                     |                                       |
|-------------------------------------------------------------------------------------|---------------------------------------|
|  | FOUND CHISELED CROSS AS NOTED         |
|  | FOUND CONTROL POINT MONUMENT AS NOTED |
| 1743                                                                                | REFERENCE STREET ADDRESS              |
| APN                                                                                 | TAX ASSESSOR PARCEL NUMBER            |
| CR                                                                                  | CORNER RECORD, SAN JOAQUIN COUNTY     |
|                                                                                     | SURVEYOR'S RECORDS                    |
| -----                                                                               | TIE LINE                              |
| =====                                                                               | LOT LINE                              |
| -----                                                                               | RIGHT-OF-WAY CENTERLINE               |

### SURVEYOR NOTE

THIS CORNER RECORD IS BEING FILED TO  
FULFILL THE PRE-CONSTRUCTION  
MONUMENT PRESERVATION REQUIREMENTS  
OF SECTION 8771 OF THE CALIFORNIA  
BUSINESS AND PROFESSIONS CODE. IT IS  
NOT THE RESULT OF A FULLY RESOLVED  
BOUNDARY SURVEY FOR ANY PARCEL OF  
REAL PROPERTY.

### REFERENCE(S)

- (A) CORNER RECORD 24-222, SAN JOAQUIN COUNTY SURVEYOR'S RECORDS  
(B) NOT OF RECORD