

CORNER RECORD

Agency Index

CR-25-153

Document Number

City of LODI County of SAN JOAQUIN, CaliforniaBrief Legal Description FOUND MONUMENTS AS SHOWN IN BOOK 44 OF MAPS AND PLATS AT PAGE 49, SAN JOAQUIN COUNTY RECORDS.**CORNER TYPE****COORDINATES (Optional)**

T3N/R6E

- ☐ Government Corner ☐ Control
☐ Meander ☒ Property
☐ Rancho ☐ Other

Date of Survey JULY 3, 2024

N. _____ E. _____

Elevation _____

Units ☐ Metric ☒ U.S. Survey Foot

Horizontal Datum _____

Zone _____ Epoch Date _____

Vertical Datum _____

☐ Complies with Public Resources Code §§8801-8819☐ Complies with Public Resources Code §§8890-8902

PLS Act Ref.:

☐ 8765(d)☒ 8771☐ 8773☐ Other:Corner/
Monument:☒ Left as found☐ Established☐ Rebuilt☒ Pre-Construction☐ Found and tagged☐ Reestablished☒ Referenced☐ Post-Construction

Narrative of corner identified and monument as found, set, reset, replaced, or removed:

☒ See sheet #2 for description(s):

THE FOUND MONUMENT(S) SHOWN ON THIS CORNER RECORD WERE FOUND IN THE APPROXIMATE LOCATION OF THE CORNER(S) ON M&P 44-49, SAN JOAQUIN COUNTY RECORDS. I DID NOT VERIFY THE IDENTITY AND VALIDITY OF THE MONUMENT(S) FOUND AS ACTUALLY MARKING THE PROPERTY CORNER(S).

SURVEYOR'S STATEMENT

This Corner Record was prepared by me or under my direction in conformance with

the Professional Land Surveyors' Act on JULY 3, 2024

Signed

P.L.S. or R.C.E. No.

8489**COUNTY SURVEYOR'S STATEMENT**

This Corner Record was received

May 6, 2025

and examined and filed

May 13, 2025

Signed

P.L.S. or R.C.E. No.

8657

Title

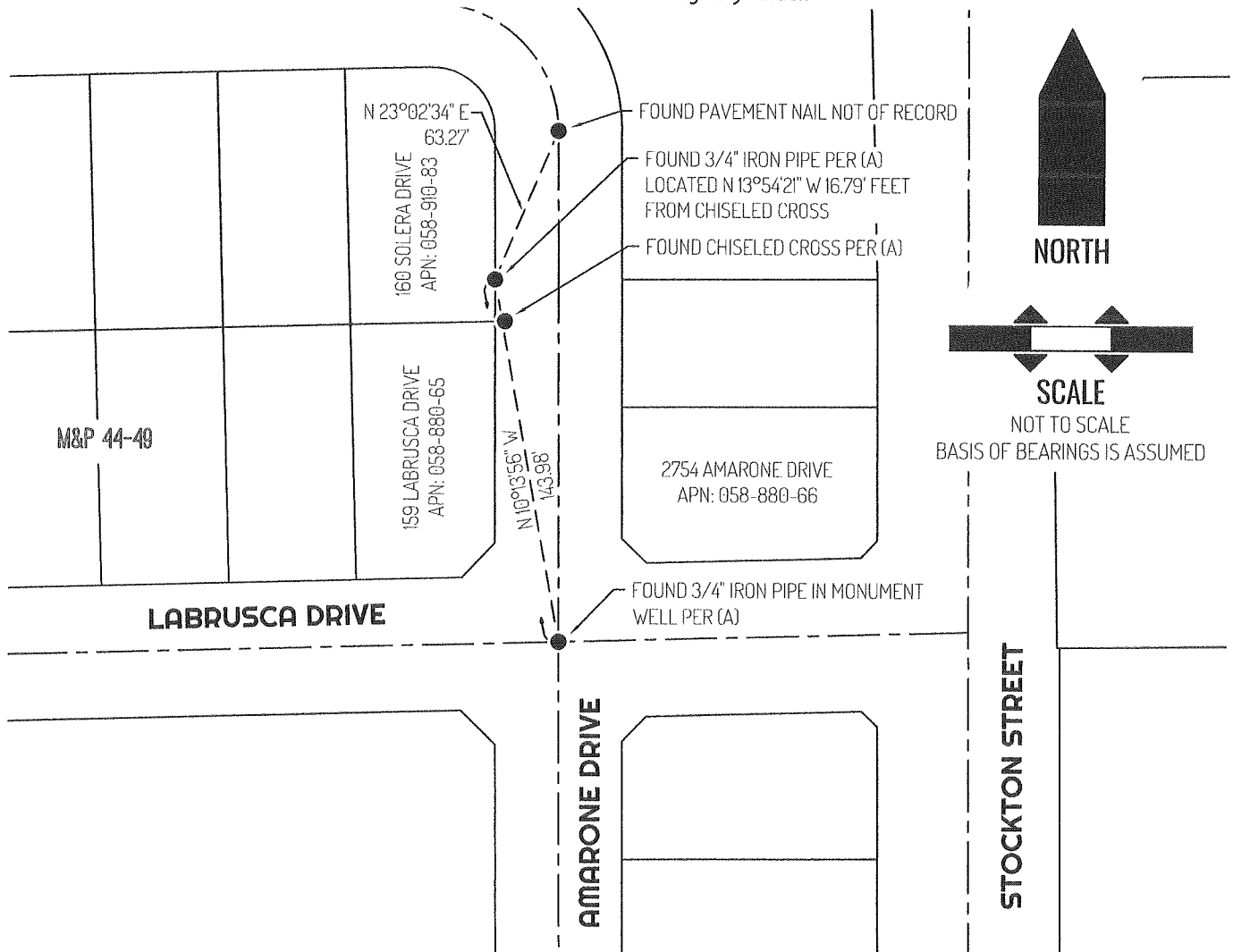
County Surveyor

County Surveyor's Comment



Document Number

Agency Index



LEGEND

●	FOUND MONUMENT AS NOTED
160	REFERENCE STREET ADDRESS
M&P	MAPS & PLATS, SAN JOAQUIN COUNTY RECORDS
APN	TAX ASSESSOR PARCEL NUMBER
---	TIE LINE
---	LOT LINE
---	RIGHT-OF-WAY CENTERLINE

SURVEYOR NOTE

THIS CORNER RECORD IS BEING FILED TO FULFILL THE PRE-CONSTRUCTION MONUMENT PRESERVATION REQUIREMENTS OF SECTION 8771 OF THE CALIFORNIA BUSINESS AND PROFESSIONS CODE. IT IS NOT THE RESULT OF A FULLY RESOLVED BOUNDARY SURVEY FOR ANY PARCEL OF REAL PROPERTY.

REFERENCE

(A) MAPS & PLATS BOOK 44, AT PAGE 49, SAN JOAQUIN COUNTY RECORDS