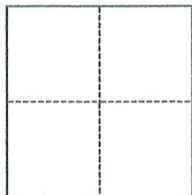


CORNER RECORD

Agency Index

CR-25-152

Document Number

City of STOCKTON County of SAN JOAQUIN, CaliforniaBrief Legal Description Found points on Kentfield Road, per Record of Survey (Bk. 37 Surveys, Pg. 66)**CORNER TYPE****COORDINATES (Optional)**

- ☐ Government Corner ☐ Control
☐ Meander ☒ Property
☐ Rancho ☐ Other

Date of Survey March 23, 2025

N. _____ E. _____

Elevation _____

Units ☐ Metric ☐ U.S. Survey Foot

Horizontal Datum _____

Zone _____ Epoch Date _____

Vertical Datum _____

☐ Complies with Public Resources Code §§8801-8819☐ Complies with Public Resources Code §§8890-8902

PLS Act Ref.:

☐ 8765(d)☒ 8771☐ 8773☐ Other:Corner/
Monument:☐ Left as found☐ Established☐ Rebuilt☒ Pre-Construction☐ Found and tagged☐ Reestablished☐ Referenced☐ Post-Construction

Narrative of corner identified and monument as found, set, reset, replaced, or removed:

☒ See sheet #2 for description(s):FOUND: 1 5/8" diameter brass disc with "+" in concrete sidewalk, stamped "LS 8877", and
chiselled "+" in concrete sidewalk.

SET: Nail & 3/4" brass tag "PLS 7393"

Note: This corner record is solely to perpetuate found points, and satisfy Sect. 8771.6 of the PLS Act.

SURVEYOR'S STATEMENT

This Corner Record was prepared by me or under my direction in conformance with

the Professional Land Surveyors' Act on March 31, 2025

Signed

P.L.S. or R.C.E. No.

PLS 7393**COUNTY SURVEYOR'S STATEMENT**

This Corner Record was received

April 30, 2025

and examined and filed

May 6, 2025

Signed

P.L.S. or R.C.E. No.

8657

Title

County Surveyor

County Surveyor's Comment

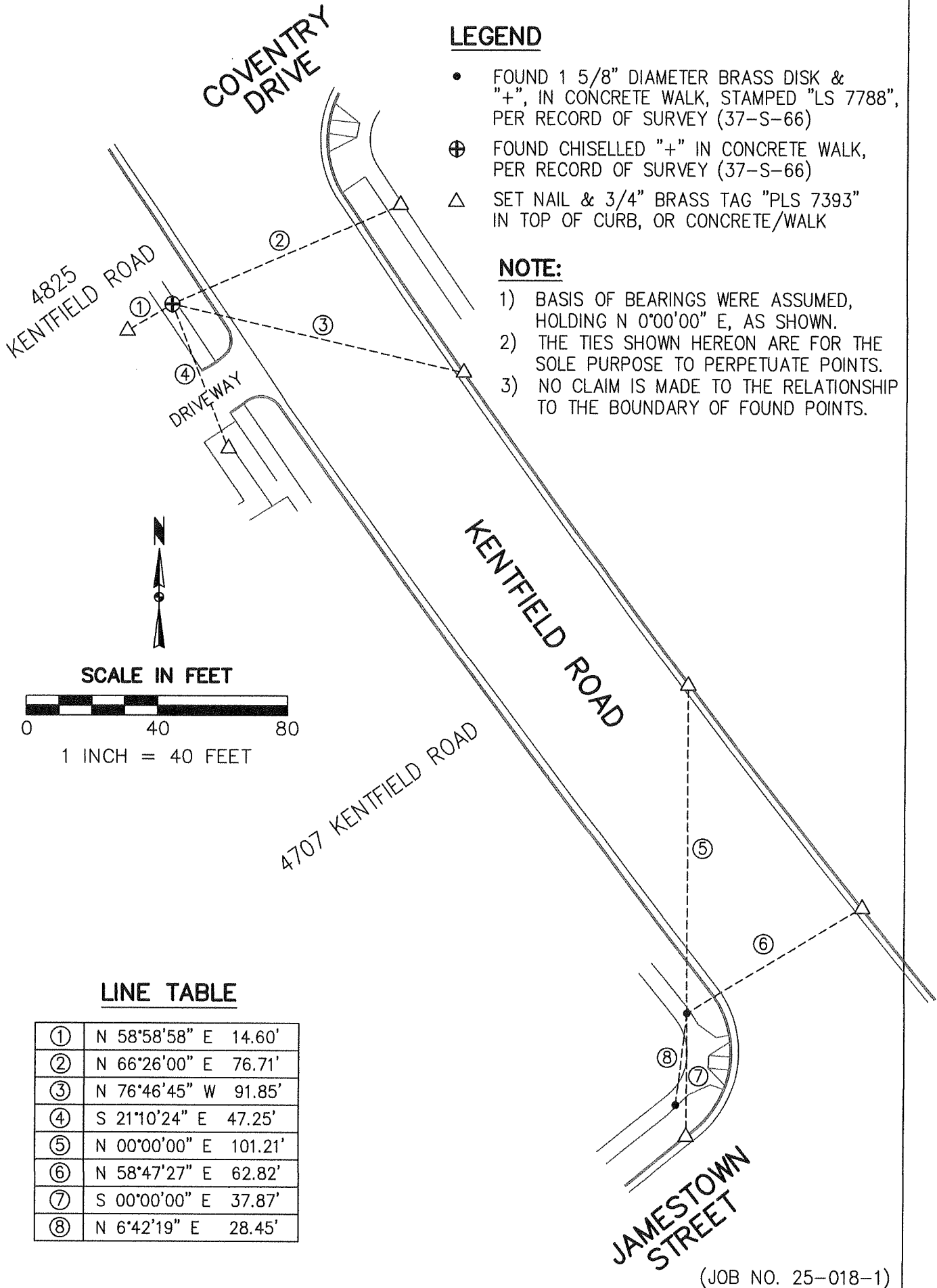


LEGEND

- FOUND 1 5/8" DIAMETER BRASS DISK & "+", IN CONCRETE WALK, STAMPED "LS 7788", PER RECORD OF SURVEY (37-S-66)
- ⊕ FOUND CHISELLED "+" IN CONCRETE WALK, PER RECORD OF SURVEY (37-S-66)
- △ SET NAIL & 3/4" BRASS TAG "PLS 7393" IN TOP OF CURB, OR CONCRETE/WALK

NOTE:

- 1) BASIS OF BEARINGS WERE ASSUMED, HOLDING N 0°00'00" E, AS SHOWN.
- 2) THE TIES SHOWN HEREON ARE FOR THE SOLE PURPOSE TO PERPETUATE POINTS.
- 3) NO CLAIM IS MADE TO THE RELATIONSHIP TO THE BOUNDARY OF FOUND POINTS.



(JOB NO. 25-018-1)